

GB Battery operated photoelectric smoke detector RM L 3100 with mute function

IMPORTANT:

Read these operating instructions and store them in a safe place.

Heed and follow the safety instructions.

Introduction

These operating instructions must be read carefully and completely. They are an integral part of your newly-purchased, battery-operated photoelectric smoke detector and contains important instructions for the operation and handling of the device.

In the following the device will only be referred to as a smoke detector. When using this product, all safety instructions must be followed at all times. If you have any questions concerning the use of the smoke detector, contact your dealer or service company. These operating instructions must be kept and if necessary transferred with the item to any third party purchasing it. Furthermore, you must make sure the smoke detector remains in good operating condition.

Technical specifications

Technical specifications			
Device:	RM L 3100		
VDS approval:	DIN EN 14604/VDS + Q label/G216044		
Range of application:	according to DIN 14676	Audible alarm:	85dB (at a distance of 3 m)
Power supply:	integrated 3V DC lithium battery		
Battery life:	10 years		
Ambient temperature:	0 °C to 39 °C	Protection class:	IP 20

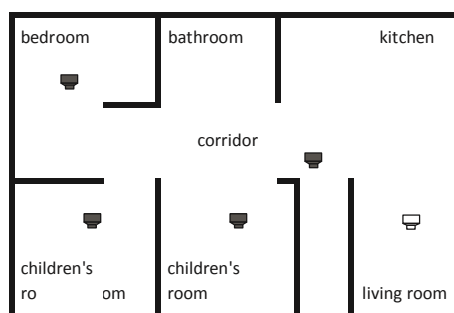
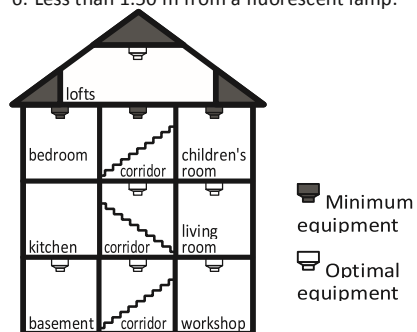
Choosing the installation site

Installation sites for smoke detectors are regulated in the binding application standard DIN EN 14676, which is applicable in Germany.

1. To provide comprehensive protection smoke detectors should be installed in all rooms, corridors, storage areas and basements. It may be necessary to install more than one smoke detector per area, especially in corridors longer than 15 m. We recommend using several smoke detectors for rooms larger than 60 m² and corridors longer than 10 m.
2. You should at least provide minimum protection and install a smoke detector in every bedroom and children's room, as well as in corridors used as emergency routes.
3. For optimal protection there should be at least one smoke detector installed in every room and corridor.
4. Because smoke rises, smoke detectors must always be installed on the ceiling, preferably in the centre of the room, in a horizontal position. According to DIN EN 14676, a distance of at least 0.5 m from all furniture and the ceiling and walls must be observed.
5. Do not install under the ridge of a roof (place at least 30 - 50 cm below the ridge), near air ducts, or in areas with a severe draught.

Installation sites to be avoided

1. Do not install smoke detectors in areas subject to draught, such as near air conditioner or ventilation intakes.
2. Bathrooms, showers, and rooms where the temperature exceeds 39 °C or falls below 0 °C.
3. Under the ridge of a roof, since smoke-free air can accumulate there in the event of a fire.
4. Kitchens, garages, laundry or boiler rooms, where cooking fumes, vehicle exhaust, dust and humidity may trigger a false alarm.
5. Very dusty or dirty areas. Dirt and dust may accumulate in the smoke alarm and hinder its reliability during operation.
6. Less than 1.50 m from a fluorescent lamp.



Smoke detector installation and start-up The mounting parts included are designed for concrete ceilings. If you have a different mounting surface you will need to purchase appropriate mounting parts at a specialist store.

1. Mark the position of the smoke detector on the ceiling.

2. Drill holes to a depth of approx. 25-30 mm with a 5.5 mm drill, or to a depth of approx. 20 mm using a 2.5 mm drill (for wood panelling or beams).
3. Insert dowels into the holes.
4. If necessary, use a screwdriver to remove the mounting grommet from the holder.



5. Screw the holder onto the ceiling.
6. Activate the smoke detector prior to installation by pressing and holding the test button for 3 seconds until the LED starts flashing. Release the button with 2 seconds. The device will beep to confirm its activation.
7. Place the smoke detector onto the holder and turn clockwise until it snaps in place.
8. If necessary, push the mounting grommet into the opening between the holder and the bottom of the case to secure the smoke detector.



Mute Function

If the smoke detector goes off accidentally, e.g. because of cooking fumes, dirt and the like, the alarm can be muted for 10 minutes, or acknowledged, with the test button. After pressing the test button (approx. 1 second), the device beeps twice and the red LED flashes every 8 seconds to show that the smoke detector has been muted.

Its sensitivity is reduced until the false alarm stops. However, the smoke detector remains on standby, so it will trigger another alarm if the smoke concentration continues to increase. The temporary de-sensitisation of the smoke chamber is cancelled automatically after 10 minutes.

The smoke detector then returns to normal sensitivity.

Important:

If a malfunction is detected the device will beep every 40 seconds.

Function test

The smoke detector is equipped with a test button. Press the test button. The alarm sounds three times, followed by a 1.5 second pause. This interval is repeated until the button is released. If there is no additional or other signal a defect has been detected.

Remark:

If the smoke detector does not function properly please contact our service department.

Maintenance and care

To ensure the functional reliability of the smoke detector it must be serviced at least once a year, as specified in DIN EN 14676. The following procedure must be used:

- Dust the smoke detector with a soft cloth.
- If necessary, remove dirt with a damp cloth.
- Do not use cleaning agents.
- Carry out a function test (see function test).
- If you do not get a response the smoke detector must be replaced.

Battery life

The battery is integrated in the smoke detector and cannot be replaced.

When the battery begins to weaken the device will beep every 40 seconds, and the red LED will flash at the same time. At the end of the battery's 10-year lifetime the device will beep, and the red LED will flash every 10 seconds. In those cases you should install a new smoke detector.

Interpreting signals/troubleshooting

Display	Meaning	Solution
LED flashes once every 40 seconds.	Indicates that the smoke detector is working properly.	–
Continuous, pulsating tone. LED flashes once per second.	Alarm or test function has been triggered.	- Leave the danger zone at once. - Release the test button (if testing).
LED flashes once every 8 seconds.	The smoke detector has been muted.	The smoke detector is de-sensitised for approx. 10 minutes.
LED flashes once every 40 seconds, and the device beeps.	The integrated battery is weakening.	- This message can be deactivated for 10 hours by pressing the test button. - The device must be replaced at once.
The device beeps every 40 seconds	An error has occurred	- This message can be deactivated for 10 hours by pressing the test button. - The device must be replaced at once.
The device beeps three times every 1.5 seconds.	The smoke detector is in test mode.	Release the test button to end the test.
LED flashes once every 10 seconds, and the device beeps.	The product has reached the end of its lifespan.	The device must be replaced at once.

Important:

Smoke detectors should be replaced after 10 years.

Evacuation plan

We recommend establishing an evacuation plan together with the other residents.

Think carefully about your evacuation route to make sure it cannot be blocked under any circumstances in the event of a fire. It must also be the quickest and safest route into the open air.

Disposal



Do not discard the product in the regular household waste after it has reached the end of its lifespan. The product must be dropped off at a collection point that recycles electrical and electronic devices. Your municipality can provide you with information on how to dispose of the product in a safe and environmentally friendly way.

Manufacturer's warranty

10 year manufacturer's warranty from date of purchase for labelled devices. Please keep the purchase receipt as verification. The warranty only covers material or manufacturing defects of items that are used as intended. The warranty expires in the event of unauthorized intervention. Your legal rights are not limited by this warranty.

Rechargeable batteries, batteries and illuminants included with an item are not included in the manufacturer's warranty.

Service address:

Hugo Brennenstuhl GmbH & Co. KG
Seestraße 1-3 D-72074 Tübingen www.brennenstuhl.com

Declaration of performance

Important: The Declaration of Performance is available for downloading on www.brennenstuhl.com, right next to item RM L 3100 / item no 1290050.