

Steca PA CAB1 Tarcom and Steca TP CAB2 Tarcom

Data cable

Steca data cables are used to connect the Steca Tarom and Steca Power Tarom solar charge controllers to a PC via a USB port. This allows direct monitoring of a system without using a data logger. This feature is especially suitable for short-term system monitoring and on-site testing. The most important system information is transferred to the PC in real time and can be conveniently analysed and graphically visualised using the Steca TarCom software.

To use this convenient data transfer system a driver and the Steca TarCom software must first be installed on the PC (Download available at www.stecasolar.com).

„Tarom RJ45 in“ can be selected under options/settings/extra in the Steca TarCom software menu system. The software then directly accesses the data from the Steca Power Tarom solar charge controller and displays this on the PC.



Product features

- Connection cable 1.8 m
- FTDI chip as USB-RS232 converter

Interfaces

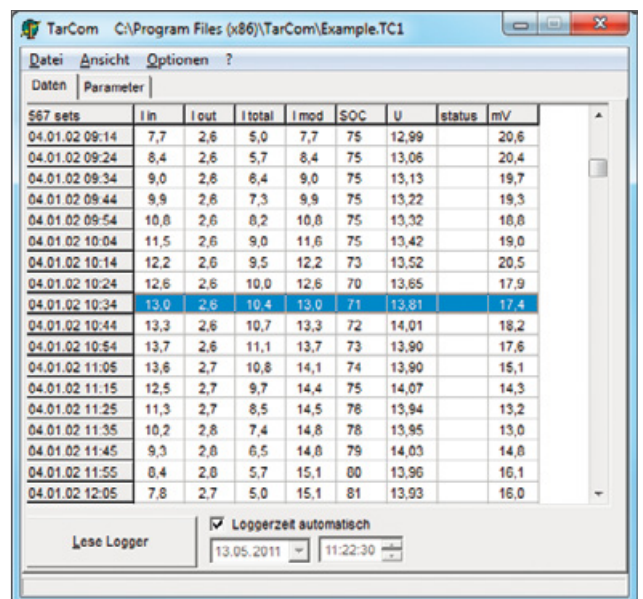
- Steca Tarom connected via connector block
- Connection to Steca Power Tarom via RJ45 plug
- Connection to PC via USB

Installation software (Windows XP)

- Steca TarCom PC-Software
- Virtual COM port (by FTDI driver)
- Driver for FTDI chip (by FTDI driver)
- Configuration of the Steca Power Tarom for data transfer

Solar charge controller	Type
Steca Tarom 4545, Steca Tarom 4545-48	Steca PA CAB2 Tarcom
Steca Power Tarom	Steca PA CAB1 Tarcom

Areas of application:



Software Steca TarCom