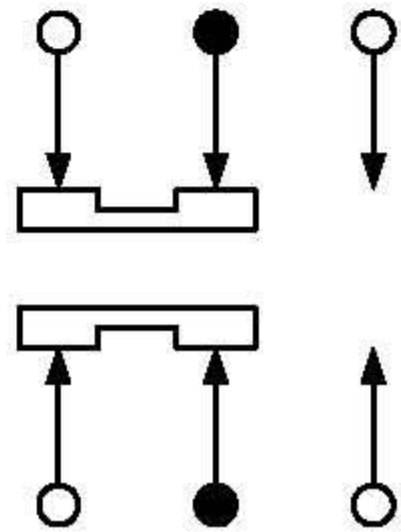


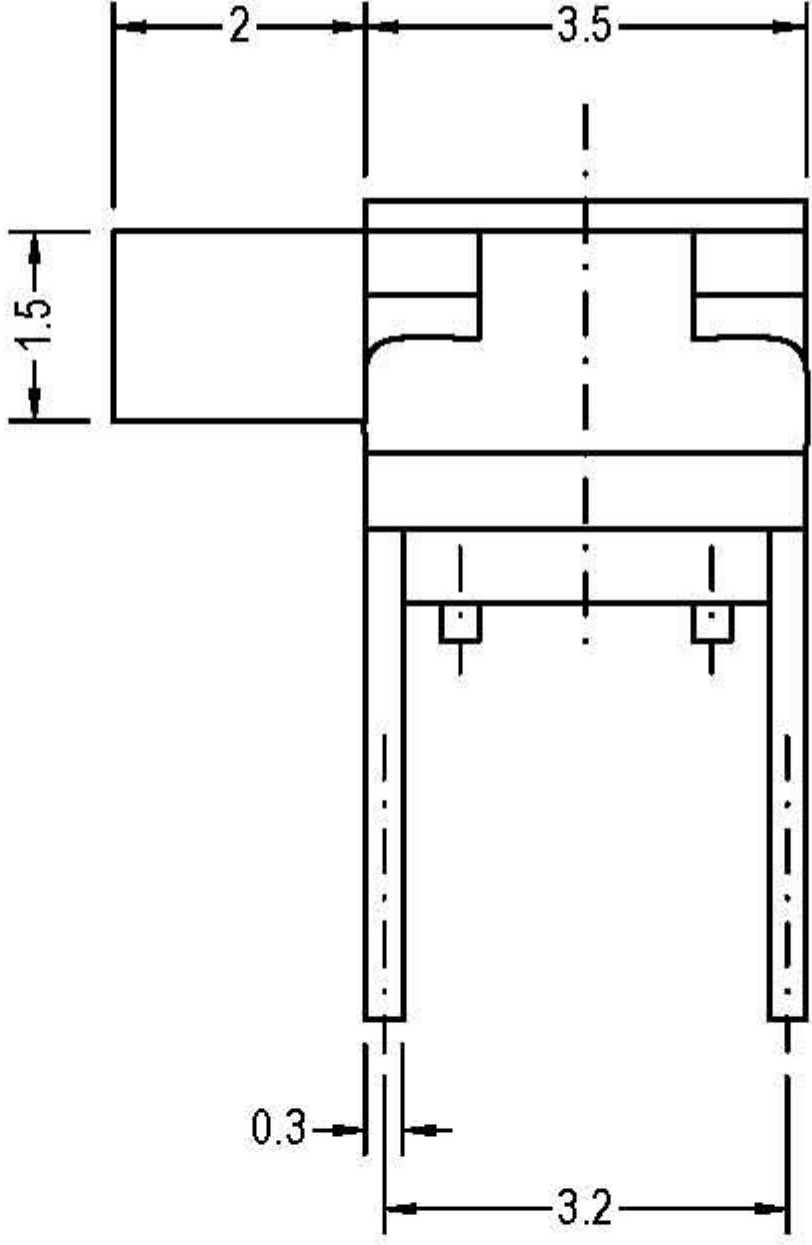
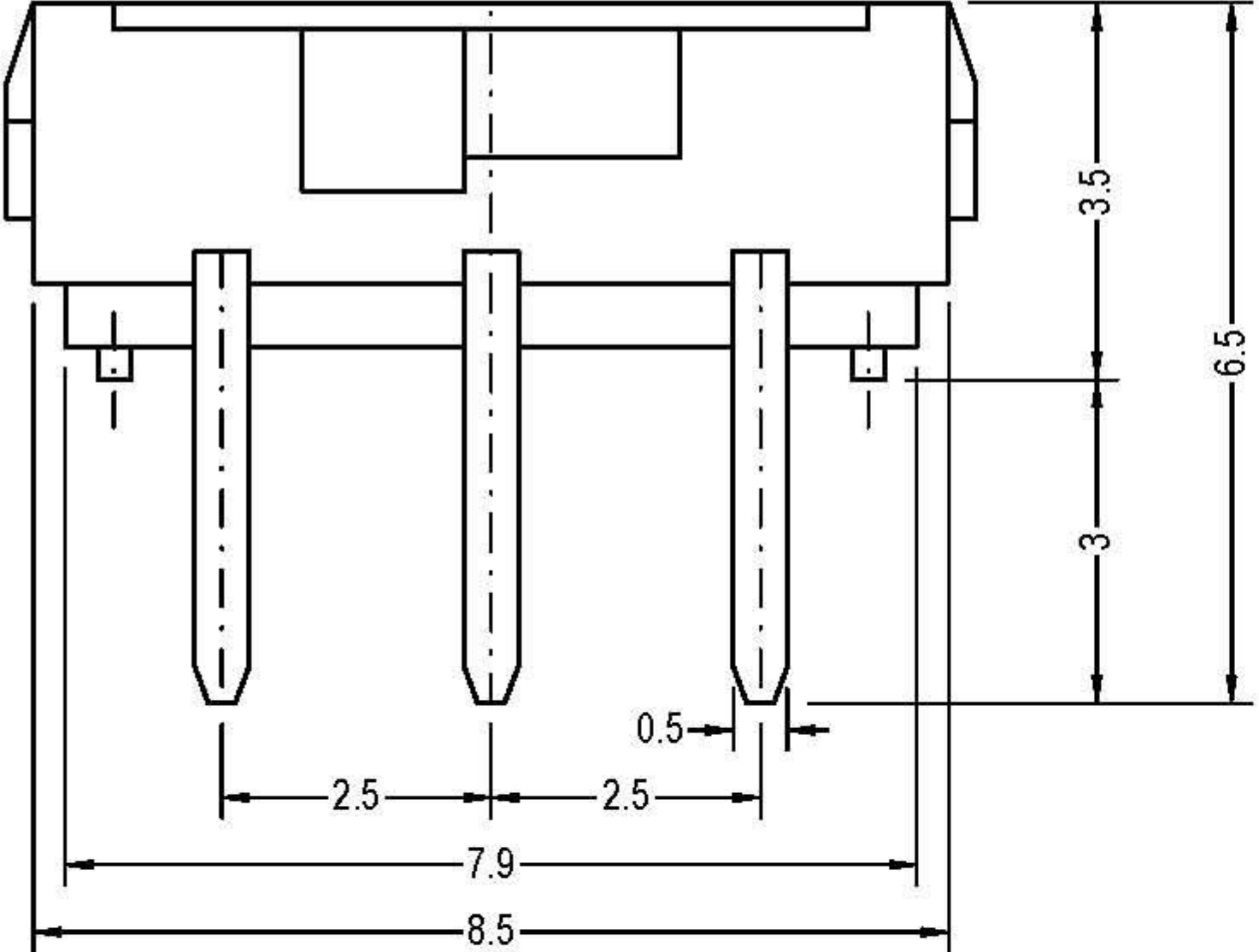
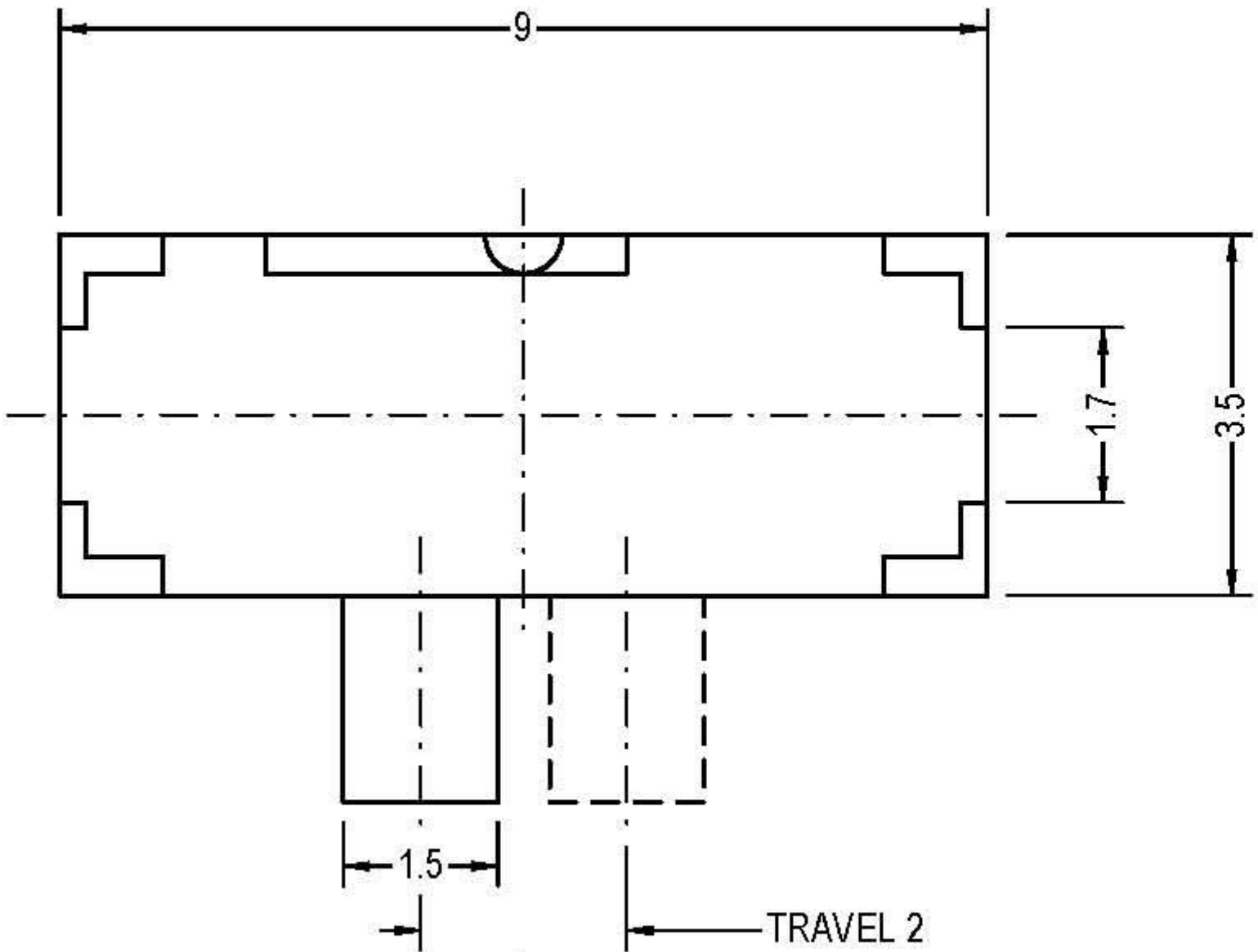
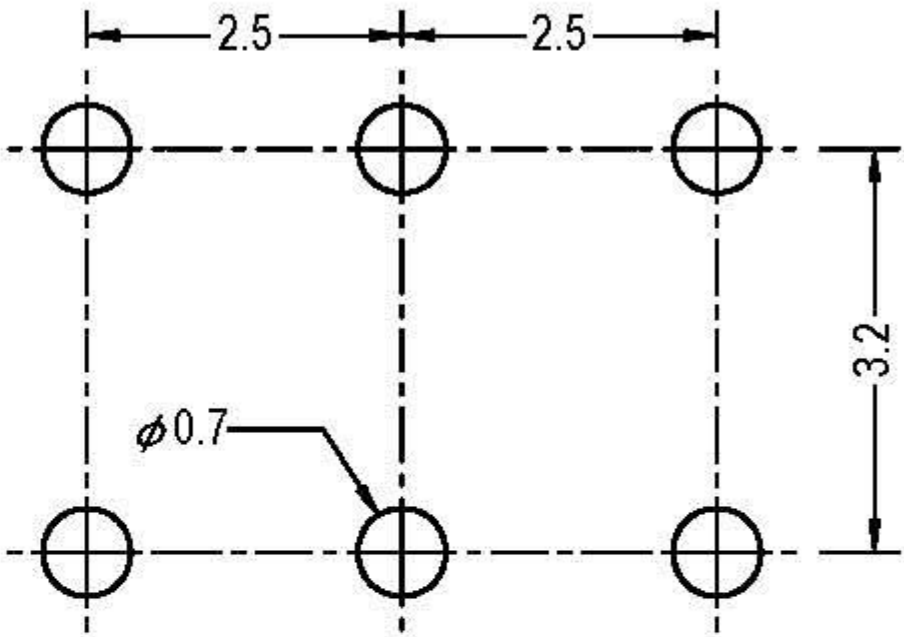
General specifications

Circuit : ON-ON(2P2T)
 Rating : D.C. 6V 0.3A
 Contact R.[max] : D.C. 5V 1A 70mΩ
 Insulation R.[min] : D.C. 500V 100MΩ
 Withstand VOL. : A.C. 500V 1minute
 Timing : Non Shorting
 Operating force : 200±100g
 Life cycle[max] : 5,000 CYCLES

SCHEMATIC



P.C.B. HOLE DETAIL



Light Country Co., Ltd.

比例 SCALE	1 : 8
單位 DIMENSION	mm
DO NOT SCALE DRAWING TOLERANCES UNLESS OTHERWISE	
UP TO 10	±0.3
ABOVE 10 TO 100	±0.5
ABOVE 100	±0.8
ANGULAR DIMENSIONS	±5°

品名 TITLE	MINI SLIDE SWITCH		
型號 MODEL	MSS-2245		
繪圖 DRAWN	MKL 2006/05/26	核准 APPROVED	HSH 2006/05/26
版次 REVISION	A	日期 DATE	2006/05/26