



## Main

|                                    |   |
|------------------------------------|---|
| Range of product                   | OsiSense XS   |
| Series name                        | General purpose   |
| Sensor type                        | Inductive proximity sensor  |
| Device application                 | Mobile equipment  |
| Sensor name                        | XS8   |
| Sensor design                      | Form 40 x 40 x 117  |
| Size                               | 117 mm  |
| Body type                          | Fixed   |
| Detector flush mounting acceptance | Non flush mountable   |
| Material                           | Plastic   |
| Enclosure material                 | PBT   |
| Type of output signal              | Discrete  |
| Wiring technique                   | 4-wire  |
| [Sn] nominal sensing distance      | 40 mm   |
| Discrete output function           | 1 NO + 1 NC   |
| Output circuit type                | DC  |
| Discrete output type               | NPN   |
| Electrical connection              | Screw-clamp terminals, 4 x 1.5 mm <sup>2</sup>  |
| [Us] rated supply voltage          | 12...48 V DC with reverse polarity protection   |
| Switching capacity in mA           | <= 200 mA with overload and short-circuit protection  |
| IP degree of protection            | IP67 conforming to IEC 60529<br>IP65 conforming to IEC 60529<br>IP69K conforming to DIN 40050 |

## Complementary

|                |                         |
|----------------|-------------------------|
| Detection face | 5 positions turret head |
| Front material | PBT                     |
| Operating zone | 0...32 mm               |

|                        |  |
|------------------------|--|
| Differential travel    | 3...15% of Sr  |
| Repeat accuracy        | <= 3% of Sr  |
| Cable entry number     | 1 tapped entry for 1/2" NPT cable gland                  |
| Status LED             | Supply on: 1 LED (green)<br>Output state: 1 LED (yellow) |
| Supply voltage limits  | 10...58 V DC   |
| Switching frequency    | <= 200 Hz  |
| Maximum voltage drop   | <2 V (closed)  |
| Current consumption    | 0...15 mA no-load  |
| Maximum delay first up | 7.5 ms   |
| Maximum delay response | 1.4 ms   |
| Maximum delay recovery | 2.5 ms   |
| Marking                | CE   |
| Height                 | 40 mm  |
| Length                 | 40 mm  |
| Width                  | 117 mm   |
| Net weight             | 0.244 kg   |

## Environment

|                                       |   |
|---------------------------------------|---|
| Product certifications                | UL<br>E2<br>CSA<br>CCC  |
| Ambient air temperature for operation | -25...70 °C   |
| Ambient air temperature for storage   | -40...85 °C   |
| Vibration resistance                  | 25 gn amplitude = +/- 2 mm (f = 10...55 Hz) conforming to IEC 60068-2-6 |
| Shock resistance                      | 50 gn for 11 ms conforming to EN 60068-2-27                             |

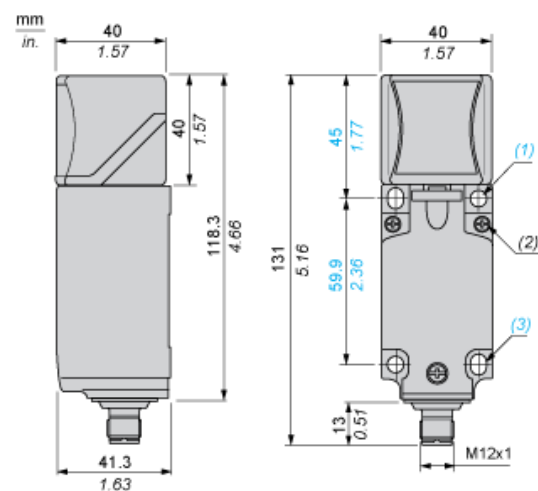
## Offer Sustainability

|                            |   |
|----------------------------|---|
| Sustainable offer status   | Green Premium product   |
| EU RoHS Directive          | Pro-active compliance (Product out of EU RoHS legal scope)<br><a href="#">EU RoHS Declaration</a> |
| Mercury free               | Yes   |
| RoHS exemption information | <a href="#">Yes</a>   |
| Environmental Disclosure   | <a href="#">Product Environmental Profile</a>   |
| Circularity Profile        | No need of specific recycling operations  |

## Contractual warranty

|          |           |
|----------|-----------|
| Warranty | 18 months |
|----------|-----------|

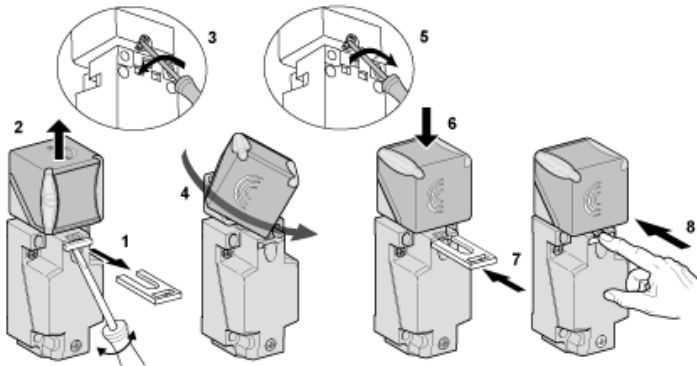
## Dimensions



- (1) 2 holes  $\varnothing 5,45$  mm /  $\varnothing 0.21$  in. (Tightening torque: < 1,5 Nm / < 13.3 lb-in.)
- (2) 3 screws M3,5. (Tightening torque: < 1,2 Nm / < 10.6 lb-in.)
- (3) 2 elongated holes 5,4 x 7,4 mm / 0.21 x 0.29 in. (Tightening torque: < 1,5 Nm / < 13.3 lb-in.)

Mounting

Head Positions

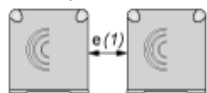


---

## Setting-up Precautions

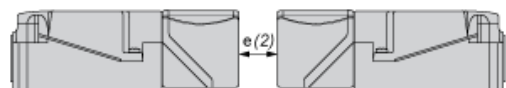
---

### Side by Side



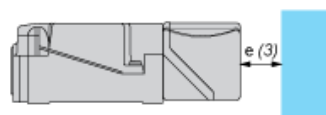
$$e(1) \geq 160$$

### Face to Face



$$e(2) \geq 320$$

### Facing a Metal Object



$$e(3) \geq 120$$

Wiring Schemes

4-Wire DC

