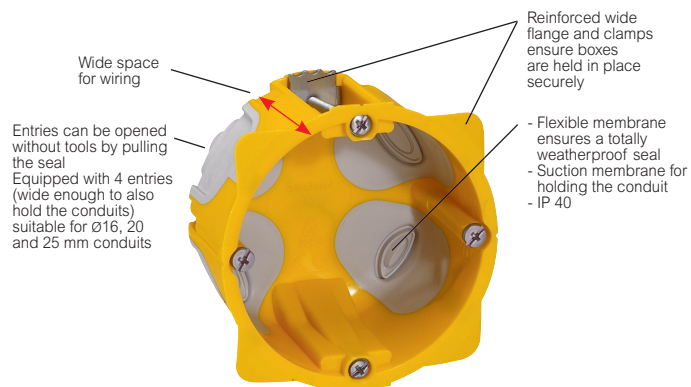


Ecobatibox

flush-mounting boxes for dry partitions

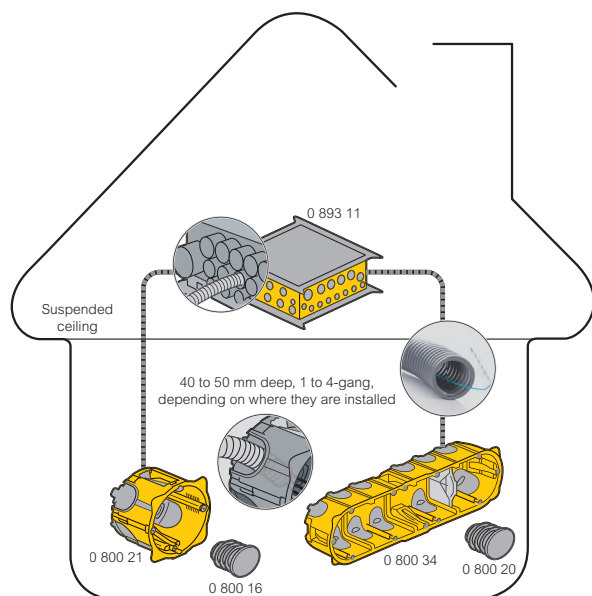
Technical characteristics

Batibox boxes Cat.Nos 0 800 21/22/23/24/31/32/33/34



Covers fitted with a pierceable membrane for inserting wires
Minimise energy losses through the conduits
Available in Ø16, 20, 25 and 32 mm

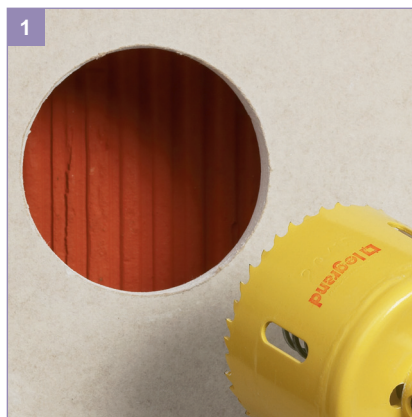
Installation principle



Batibox™

flush-mounting boxes for dry partitions

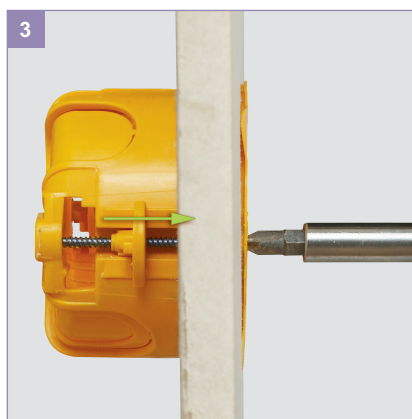
Installation



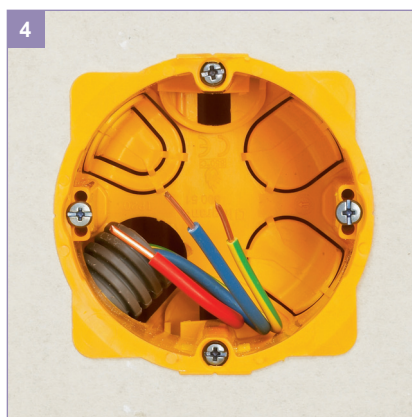
Hole cutter saw Ø67
Box Ø67 mm, more space for cabling



Retractable fixing claws for a better comfort during installation



Fixing claws adapted to the thickness of the wall
Automatic positioning, even with an electric screwdriver



Large space to improve fixing (according to the drilling Ø67 to 68 mm)