

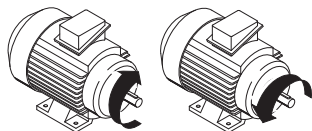
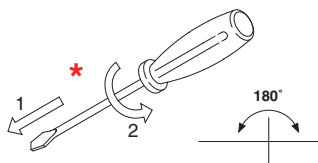
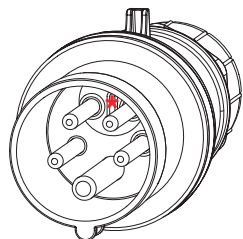
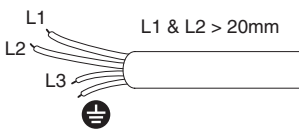
PHASE REVERSE

IT: Utilizzare solo conduttori flessibili di Classe 5 o Classe 6. Assicurarsi che i conduttori possano muoversi per permettere la manovra del dispositivo di inversione di fase.

EN: Use Class 5 or Class 6 flexible conductors only. Make sure that the conductors can move to permit operation of the phase inverting means.

ES: Usar exclusivamente conductores flexibles (Clase 5 o Clase 6). Asegúrese de que los conductores pueden moverse para permitir el funcionamiento de la inversión de fase.

FR: Utiliser exclusivement conducteurs souples (Classe 5 ou Classe 6). Assurez-vous que les conducteurs peuvent se déplacer pour permettre le fonctionnement de l'inversion de phase.



InfoTECH

ITALY **WORLDWIDE**

Numero Verde **800-018009** ScameOnLine www.scame.com
infotech@scame.com

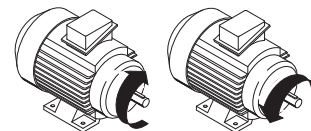
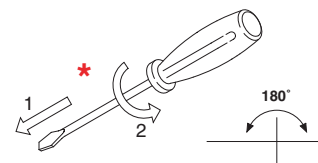
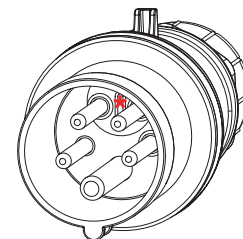
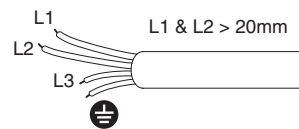
PHASE REVERSE

IT: Utilizzare solo conduttori flessibili di Classe 5 o Classe 6. Assicurarsi che i conduttori possano muoversi per permettere la manovra del dispositivo di inversione di fase.

EN: Use Class 5 or Class 6 flexible conductors only. Make sure that the conductors can move to permit operation of the phase inverting means.

ES: Usar exclusivamente conductores flexibles (Clase 5 o Clase 6). Asegúrese de que los conductores pueden moverse para permitir el funcionamiento de la inversión de fase.

FR: Utiliser exclusivement conducteurs souples (Classe 5 ou Classe 6). Assurez-vous que les conducteurs peuvent se déplacer pour permettre le fonctionnement de l'inversion de phase.



InfoTECH

ITALY **WORLDWIDE**

Numero Verde **800-018009** ScameOnLine www.scame.com
infotech@scame.com

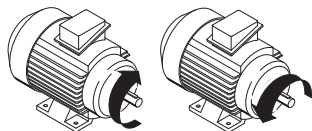
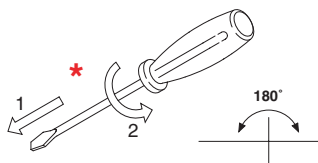
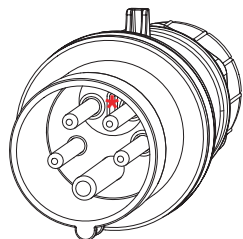
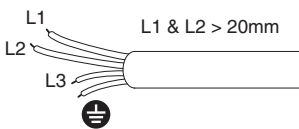
PHASE REVERSE

IT: Utilizzare solo conduttori flessibili di Classe 5 o Classe 6. Assicurarsi che i conduttori possano muoversi per permettere la manovra del dispositivo di inversione di fase.

EN: Use Class 5 or Class 6 flexible conductors only. Make sure that the conductors can move to permit operation of the phase inverting means.

ES: Usar exclusivamente conductores flexibles (Clase 5 o Clase 6). Asegúrese de que los conductores pueden moverse para permitir el funcionamiento de la inversión de fase.

FR: Utiliser exclusivement conducteurs souples (Classe 5 ou Classe 6). Assurez-vous que les conducteurs peuvent se déplacer pour permettre le fonctionnement de l'inversion de phase.



InfoTECH

ITALY **WORLDWIDE**

Numero Verde **800-018009** ScameOnLine www.scame.com
infotech@scame.com

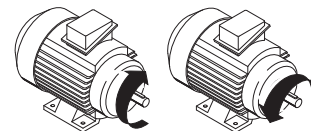
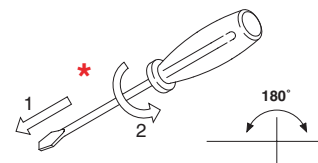
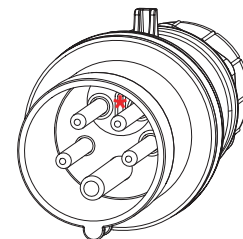
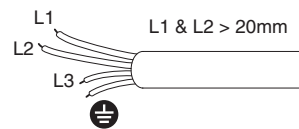
PHASE REVERSE

IT: Utilizzare solo conduttori flessibili di Classe 5 o Classe 6. Assicurarsi che i conduttori possano muoversi per permettere la manovra del dispositivo di inversione di fase.

EN: Use Class 5 or Class 6 flexible conductors only. Make sure that the conductors can move to permit operation of the phase inverting means.

ES: Usar exclusivamente conductores flexibles (Clase 5 o Clase 6). Asegúrese de que los conductores pueden moverse para permitir el funcionamiento de la inversión de fase.

FR: Utiliser exclusivement conducteurs souples (Classe 5 ou Classe 6). Assurez-vous que les conducteurs peuvent se déplacer pour permettre le fonctionnement de l'inversion de phase.



InfoTECH

ITALY **WORLDWIDE**

Numero Verde **800-018009** ScameOnLine www.scame.com
infotech@scame.com