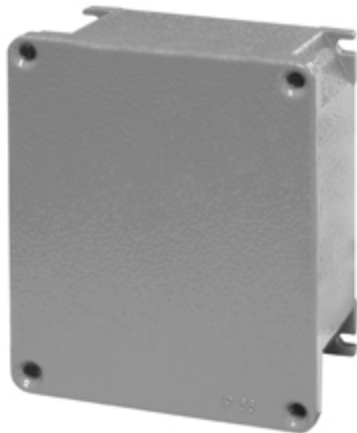


# Product Technical Sheet

16 Dec 2020 09:15



## 653.9001

### JUNCTION BOX

140x115x60mm IP66/IP67 GREY DIE-CAST ALUMINIUM

Product Approvals

| TECHDATA                   |                    | STANDARDS AND LAWS        |  |
|----------------------------|--------------------|---------------------------|--|
| Commercial series          | ALUX               | EN 60670-22 (2006)        | [European Standard] Boxes and enclosures for electrical accessories for household and similar fixed electrical installations -- Part 22: Particular requirements for connecting boxes and enclosures |
| Type of product            | JUNCTION BOX       |                           |  |
| Synthetical description    | JUNCTION BOX       |                           |  |
| Protection degree          | Watertight         | EN 60079-0 (2012)         | [European Standard] Explosive atmospheres. General requirements.   |
| Protection degree IP       | IP66/IP67          | EN 60079-31 (2014)        | [European Standard] Explosive atmospheres. Equipment dust ignition protection by enclosure "t"   |
| Material                   | DIE-CAST ALUMINIUM | EN 60079-0/A11 (2013)     | [European Standard] Explosive atmospheres. General requirements.   |
| Colour                     | GREY               | EN 60079-15 (2010)        | [European Standard] Electrical apparatus for explosive gas atmospheres. Construction, test and marking of type of protection "n" electrical apparatus.   |
| Dimensions                 | 140x115x60mm       |                           |  |
| Group and categories EX    | II 3GD             | DIRECTIVE ATEX 2014/34/UE | [European Directives] Atmosphere Explosive   |
| Modo protezione gas        | Ex nA IIC Gc       |                           |  |
| Dust protection            | Ex tc IIIC Dc IP66 |                           |  |
| Ambient temperature Ta min | -20 °C             |                           |  |
| Ambient temperature Ta max | 60 °C              |                           |  |