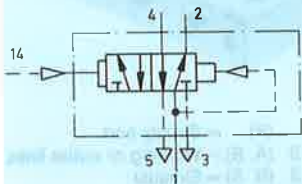


Cassette valve

Single pilot valve,
air spring return
without sub-base

Type CL-5/2-1/4



The valve is actuated only as long as a signal is applied to port 14. Return is pneumatic by virtue of the difference in the effective areas of the two control diaphragms (air spring).

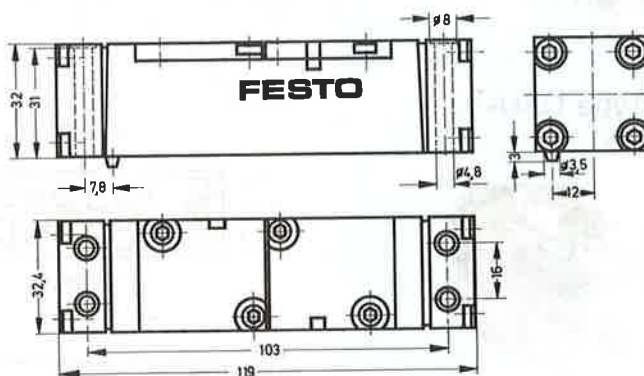
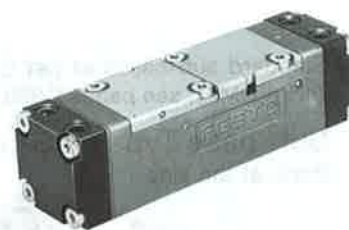
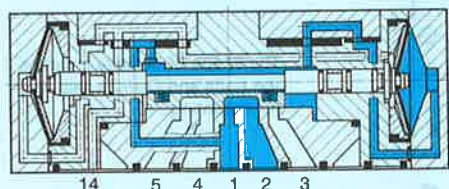
Possibilities for fitting:

This cassette valve can be mounted directly on all FESTO sub-bases (see next page).

The mounting bolts (4 bolts, M4 × 40 DIN 84) are supplied with the valve.

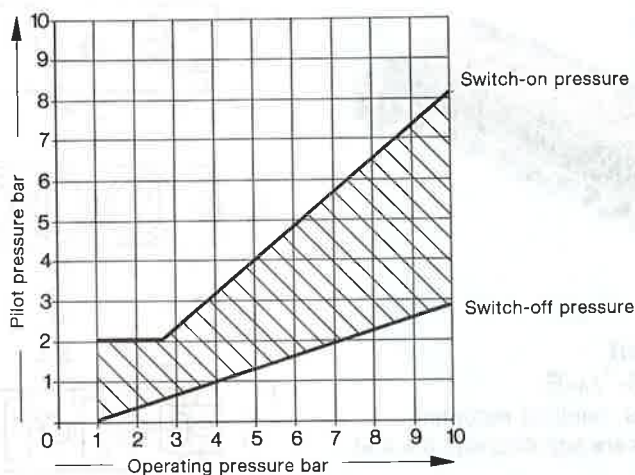
Note:

Basic cassette valve, set of wearing parts and additional valve variants, see sheet 2.890.



- 1 (P) = Supply port
- 4, 2 (A, B) = Working or outlet lines
- 5, 3 (R, S) = Exhaust
- 14 (Y, Z) = Pilot lines

Minimum pilot pressure as a function of operating pressure



Order code	Part No./Type	5734 CL-5/2-1/4
Medium		Compressed air, filtered (lubricated or unlubricated)
Design		Flat slide valve, with diaphragm control
Mounting		On sub-bases (see next page)
Connection	Working lines	G ^{1/4} (sub base)
	Pilot line	G ^{1/8} (sub base)
Nominal size		6.5 mm
Standard nominal flow rate (P → A)		1140 l/min (basic valve)
Operating pressure range		1 to 10 bar
Pilot pressure range		2 to 10 bar (see graph)
Response time at 6 bar		On: 29 ms, Off: 25 ms
Ambient temperature		-5 to +40 °C
Medium temperature		-10 to +60 °C
Materials		Housing: die-cast aluminium; diaphragms: polyurethane; seals: perbunan
Weight		0.270 kg

Standard sub-bases as per CETOP and DIN (VDMA), see pages 2.950 and 2.952.

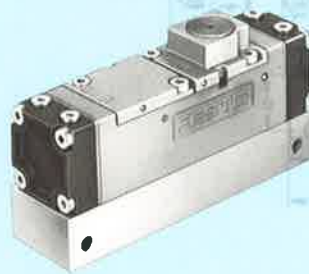
Sub-base Type CAS-1/4

Ports at the side



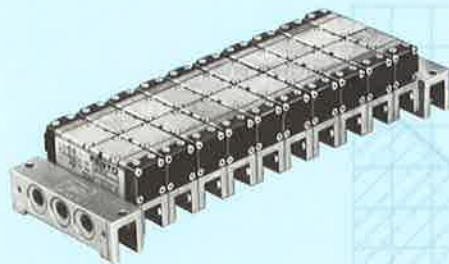
Sub-base Type CAU-1/4

Ports underneath



Sub-base Type CAB-1/4

for manifold mounting



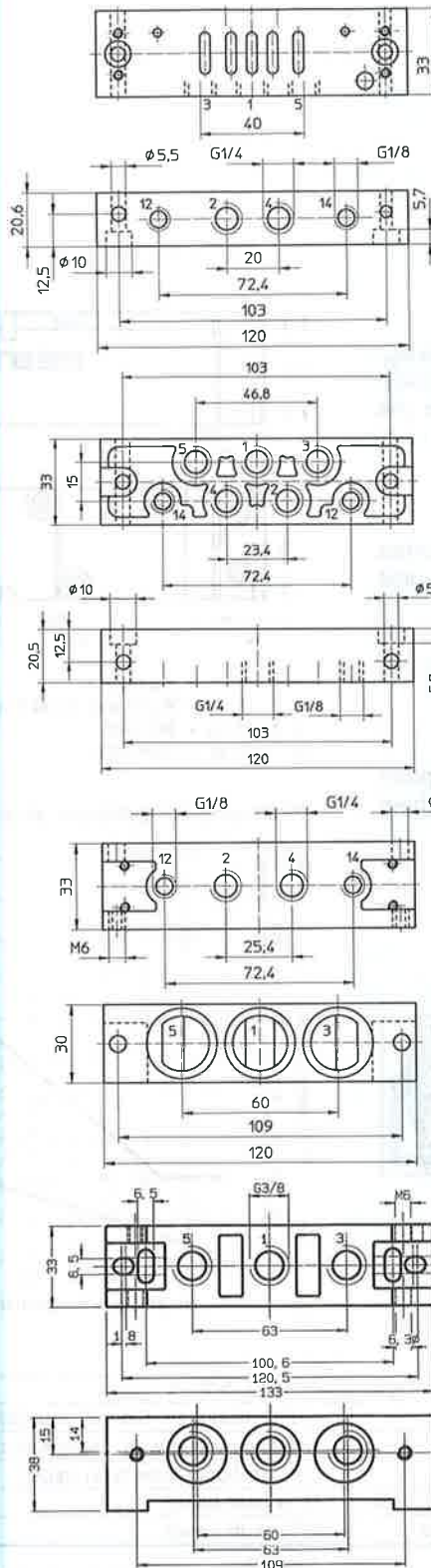
End plate kit Type CEPB-1/4-B

2 end plates for manifold mounting
Mounting bolts are supplied with the end plate.

Isolating disc Type CSC-1/4

To seal the common lines P, R, and S, between the end plate and sub-base or between 2 sub-bases.

In comparison with standard sub-bases, FESTO sub-bases require considerably less space for fitting, thus enabling more valves per manifold.



CAS-1/4



- 1 (P) = Supply port
- 4, 2 (A, B) = Working or outlet lines
- 5, 3 (R, S) = Exhaust
- 12, 14 (Y, Z) = Pilot lines

CAU-1/4



CAB-1/4



The scope of delivery includes the bolts and O-rings required for mounting.

CEPB-1/4-B



Order code	Part No./Type	5830 CAS-1/4	5831 CAU-1/4	5829 CAB-1/4	10405 CEPB-1/4-B	5670 CSC-1/4
Mounting		Through-holes			Manifold mounting	
Connection	Working lines	G 1/4	G 1/4	G 1/4	G 3/8	-
	Pilot lines	G 1/8	G 1/8	G 1/8	-	-
Standard nominal flow rate with valve		750 l/min	750 l/min	-	-	-
Materials		Die-cast aluminium				Plastic
Weight		0.180 kg	0.120 kg	0.160 kg	0.510 kg	0.001 kg