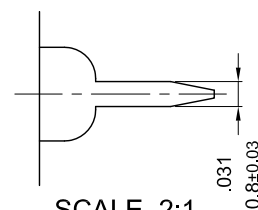


DETAIL A: TERMINAL,
thickness: 0.8 ± 0.03 mm



SCALE 2:1

SLIDE SWITCH MODEL SL14

RATING: 12A 125/250VAC (UL/CUL)

10A 125/250VAC (CQC)

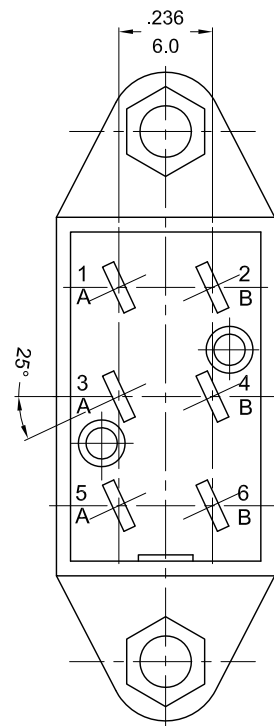
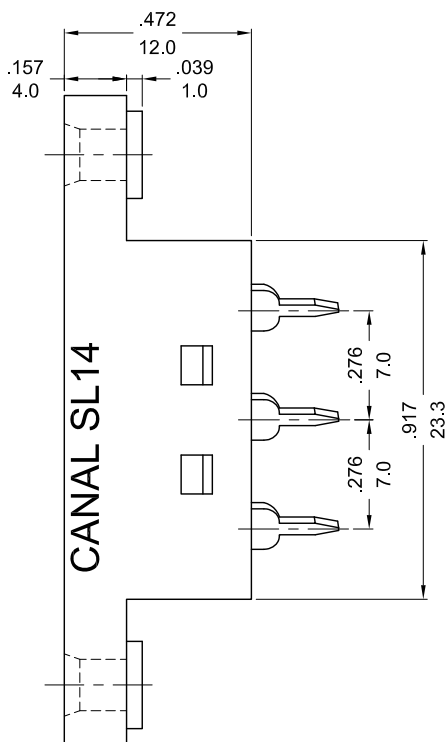
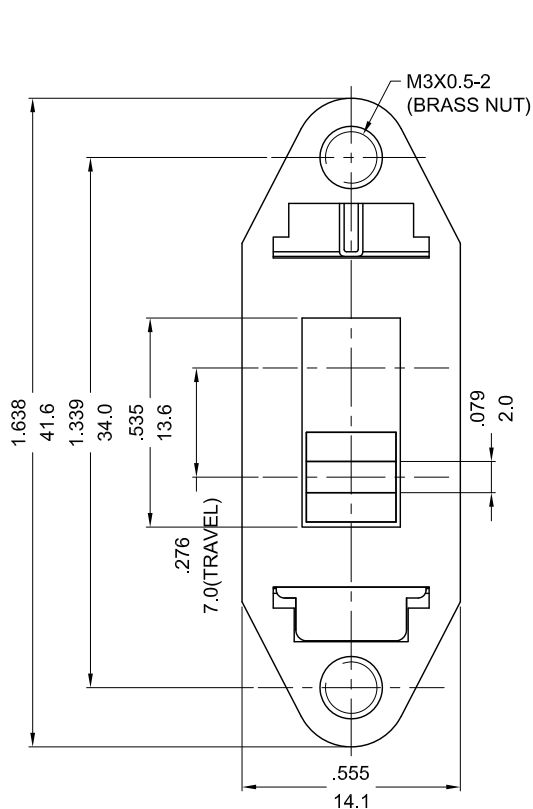
10(1)A 250V~ μ T85/55 (ENEC 10/VDE)

4(2)A 250V~ μ T85/55

CONTACT RESISTANCE: 20m Ω INITIAL (MAX)

INSULATION RESISTANCE: DC 500V 100M Ω (MIN)

DIELECTRIC STRENGTH: 1,000VAC FOR 1 MINUTE



NOTE: TOLERANCES UNLESS OTHERWISE SPECIFIED: $\pm .012/0.3$ (in/mm)

REVISION	DESCRIPTION	REVISED BY	TOLERANCES		ANGLE $\frac{1}{2}^\circ$		UNIT	mm	PART NAME	SL14 SPEC DRAWING	DWG NO
			DRAWN BY	DESIGNED BY	SCALE						
④ 2010.03.09	整理圖面，重新出圖	向宏	吳美玉	吳美玉	SCALE	2/1					S1084F
③ 2008.11.18	修改端子寬度尺寸，重新出圖	張勤蘭			DATE	2001.05.30	PART NO	SL14-22AM(5F)NC			
⑥ 2013.03.21	RATING增加CUL安規說明，重新出圖	向宏	CHECKED BY	APPROVED BY							
⑤ 2012.04.20	取消CSA，重新出圖	向宏									