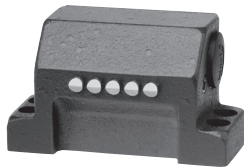


Series GLBF... 8 mm mechanical

- ▶ Plunger spacing 8 mm
- ▶ Horizontal housing
- ▶ Degree of protection IP67 according to IEC 60529



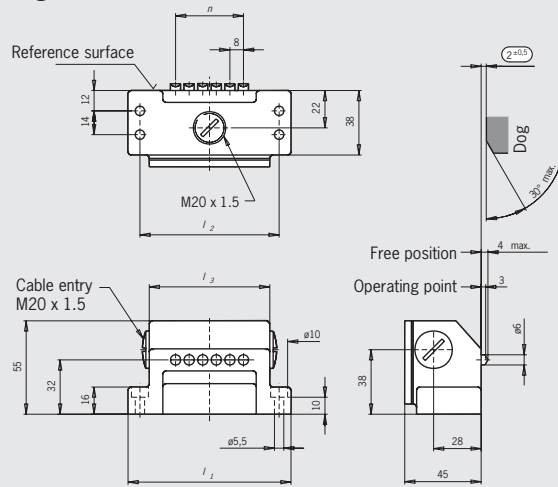
Switching elements

- ▶ **ES 552** Snap-action switching element
1 changeover contact Standard switching element

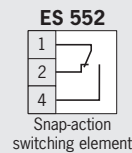
(See technical data on the switching elements)




Series GLBF... mechanical Plunger spacing 8 mm

Dimension drawing illustration with chisel plunger, plunger type dependent on version



Switching elements



Plunger types	 Chisel	 Roller (plain bearing)	 Ball	
Operating point accuracy ¹⁾	± 0.02	± 0.05	± 0.03	mm
Approach speed, max. ²⁾	20	50	8	m/min

1) The reproducible operating point accuracy refers to the axial travel of the plunger after the switching element ES 502 E has been run-in with approx. 2000 operating cycles

2) The approach speed specified applies in conjunction with EUCHNER trip dogs according to DIN 69639

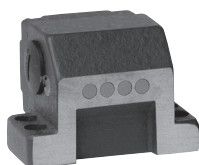
3) Plunger type on request

n Number of plungers/proximity switches	Plunger/proximity switch spacing 8 mm			Housing material
	l ₁	l ₂	l ₃	
2	64	50	39	Sand-cast aluminum, anodized
3	80	66	55	
4	80	66	55	
5	96	82	71	
6	96	82	71	
8	112	98	87	
10	128	114	103	
12	144	130	119	

Gray figures on request

Series GLBF... 8 mm inductive (on request)

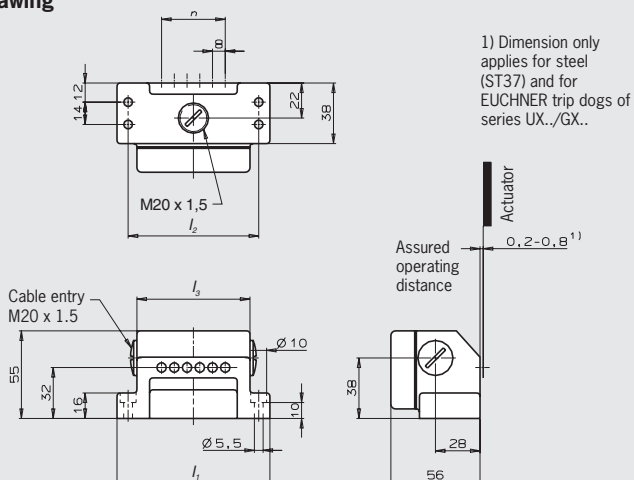
- Proximity switch spacing 8 mm
- Horizontal housing
- Degree of protection IP67 according to IEC 60529



Series GLBF... inductive

Proximity switch spacing 8 mm

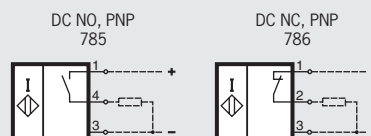
Dimension drawing



Rated operating distance

With 8 mm proximity switch spacing, the rated operating distance is 1 mm.

Switching elements



Further switching elements on request (see page 32/33)

Ordering code

On request

Series

Number of plungers/proximity switches

Plunger type (only mechanical switch, e. g. **D** = chisel)

Plunger/proximity switch spacing (8 mm)

Switching element (e. g. **785**)

Cable entry M20 x 1.5

Mechanical

Inductive

G	L	B	F				0	8	-	5	5	2	-	M
G	L	B	F			X	0	8	-				-	M