

1

2

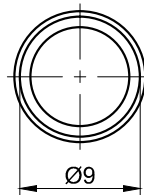
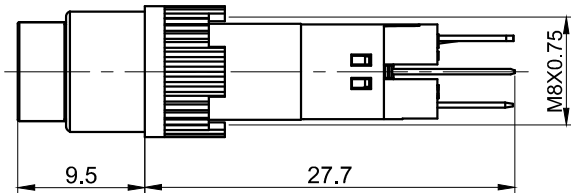
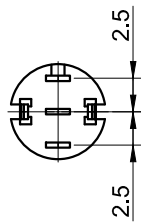
3

4

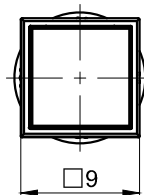
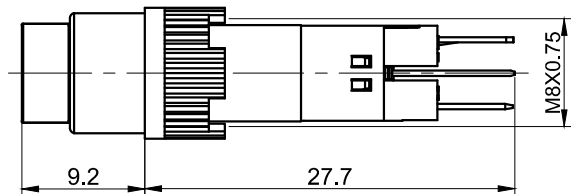
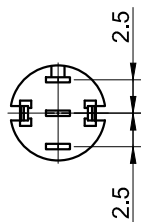
5

6

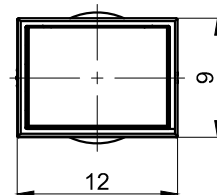
7



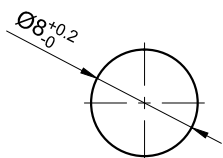
LAS4Y



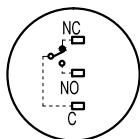
LAS4F



LAS4J



PANEL CUTOUT
MAX.PANEL THICKNESS
6 mm



Contact Composition

FOR
客户名称APPROVED
客户确认签字ATTN
销售负责人

Part Number: LAS4★-11■/△

"★"	Head
Y	Round
F	Square
J	Rectangular

"■"	Operation mode
No Letter	Momentary
Z	Latching

"△"	Cap color
R	Red
G	Green
Y	Yellow
B	Blue
W	White

SPECIFICATIONS:

- Switch Max Rating: Ith:3A, Ui:220VAC.
- Switch Rating: 220VAC/0.5A, 110VDC/0.1A.
- Mechanical Life: Momentary ≥200,000cycles;
Latching ≥100,000cycles.
- Electrical Life: ≥50,000cycles.
- Contact Resistance: ≤50mΩ.
- Insulation Resistance: ≥100MΩ.
- Dielectric Strength:
Between terminals of the same pole: AC 1,500V, RMS 50Hz, 1min;
Between terminals of different pole: AC 2,000V, RMS 50Hz, 1min.
- Operating Temperature: -25°C ~ +55°C (No Freezing).
- Operating Force: About 1.4N.
- Operating Travel: About 3mm.
- Terminal Type: Pin Terminal (1.8 x 0.4mm).
- IP Class: IP40.

MATERIALS:

- Contact: Silver alloy.
- Button: PC.
- Body: PC.
- Base: PA

BRAND
品牌

ONPOW

红波按钮制造有限公司
ONPOW PUSH BUTTON MANUFACTURE CO.,LTD.

THESE DRAWINGS AND SPECIFICATIONS
ARE THE PROPERTY OF ONPOW PUSH
BUTTON MANUFACTURE CO.,LTD. AND
SHALL NOT BE REPRODUCED COPIED OR
USED IN ANY MANNER WITHOUT THE
PRIOR WRITTEN CONSENT OF ONPOW
PUSH BUTTON MANUFACTURE CO.,LTD.

USED 用途	APPD 审核	CH	2020/04/29
FINISH 处理	CHKD 校对	NCH	2020/04/29
SCALE 比例	UNIT 单位	DR. 制图	ZPD
2.2 / 1	mm	ZPD	2020/04/29

DIMENSIONS	TOLERANCE
0.00 TO 18.00mm	±0.43mm
18.01 TO 30.00mm	±0.52mm
30.01 TO 50.00mm	±0.62mm
50.01 TO 80.00mm	±0.74mm

TITLE 名称	LAS4 Series Pushbutton Switches	
DWG NO. 图号	LAS4不带灯	
FILE NAME 档案名称	LAS4.DWG	SHEET 张
		1 / 1
		REV. 更改
		1

SIZE
图纸
A4

1

2

3

4

5

6

7