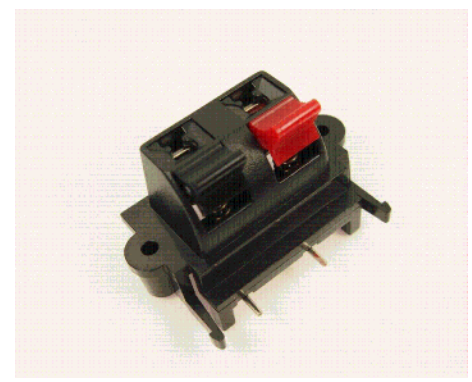
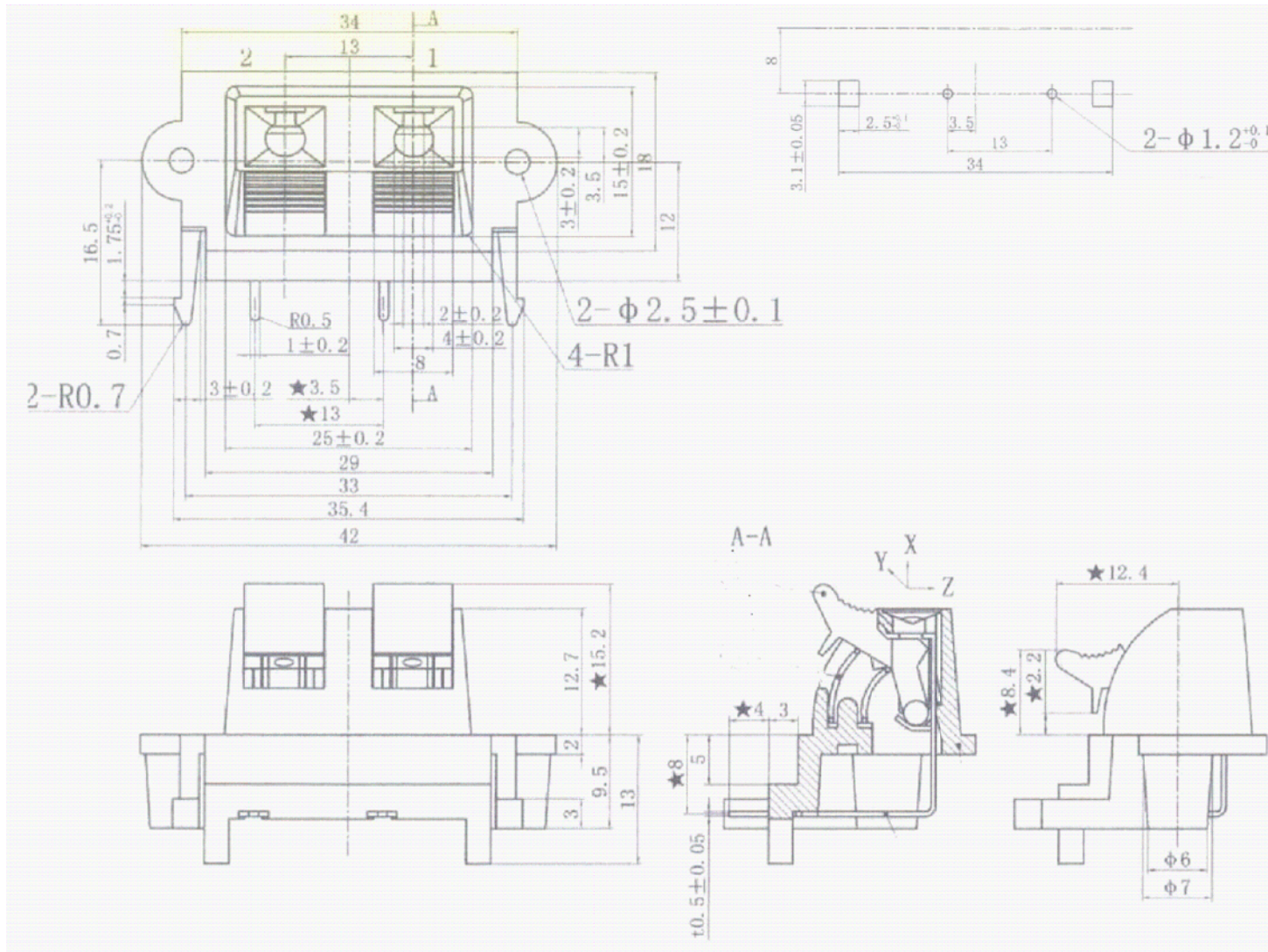


ISS.	AMEND	DATE
1	ISSUED	10/01/13



RATING: 7A 60V
 CONTACT RESISTANCE: Under 20mΩ @DC2.5V DC1A
 INSULATION RESISTANCE: Over 100MΩ @500V DC
 DIELECTRIC WITHSTANDING VOLTAGE: 1 minute @1200V AC

RoHS
 COMPLIANT

TOLERANCE
 NO DEC. PLACE ±
 1 DEC. PLACE ±
 2 DEC. PLACE ±
 HOLE Ø ±
 ANGLES ±
 UNLESS OTHERWISE STATED

Cliff Electronic Components Ltd.
 76 Holmethorpe Avenue, Holmethorpe Industrial Estate,
 Redhill, Surrey, RH1 2PF, England, UK
 Tel: 01737-771375 Fax: 01737-766012 Website: www.cliffuk.co.uk

DIMENSIONS IN MILLIMETERS UNLESS OTHERWISE STATED. WORK TO DIMENSIONS. REMOVE ALL BURRS. IF IN DOUBT ASK.

3rd ANGLE PROJECTION:

DO NOT SCALE

MATERIAL: COMPOSITE

TITLE: PUSH TERMINAL (2 WAY)

FINISH: AS MOULDED - CLEAN

DRWG. No. FE6935

THE CONTENTS OF THIS DOCUMENT MUST NOT BE COPIED OR DISCLOSED TO A 3rd PARTY WITHOUT WRITTEN PERMISSION OF CLIFF UK. © 2013

DRAWN: T.J.O.

APPROVED: D.P.J.

FORM: A4DRWGH