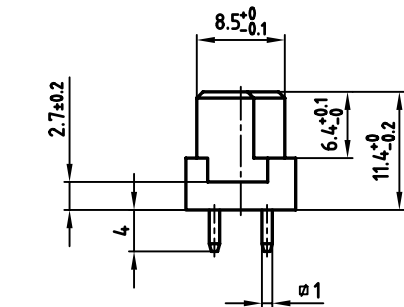
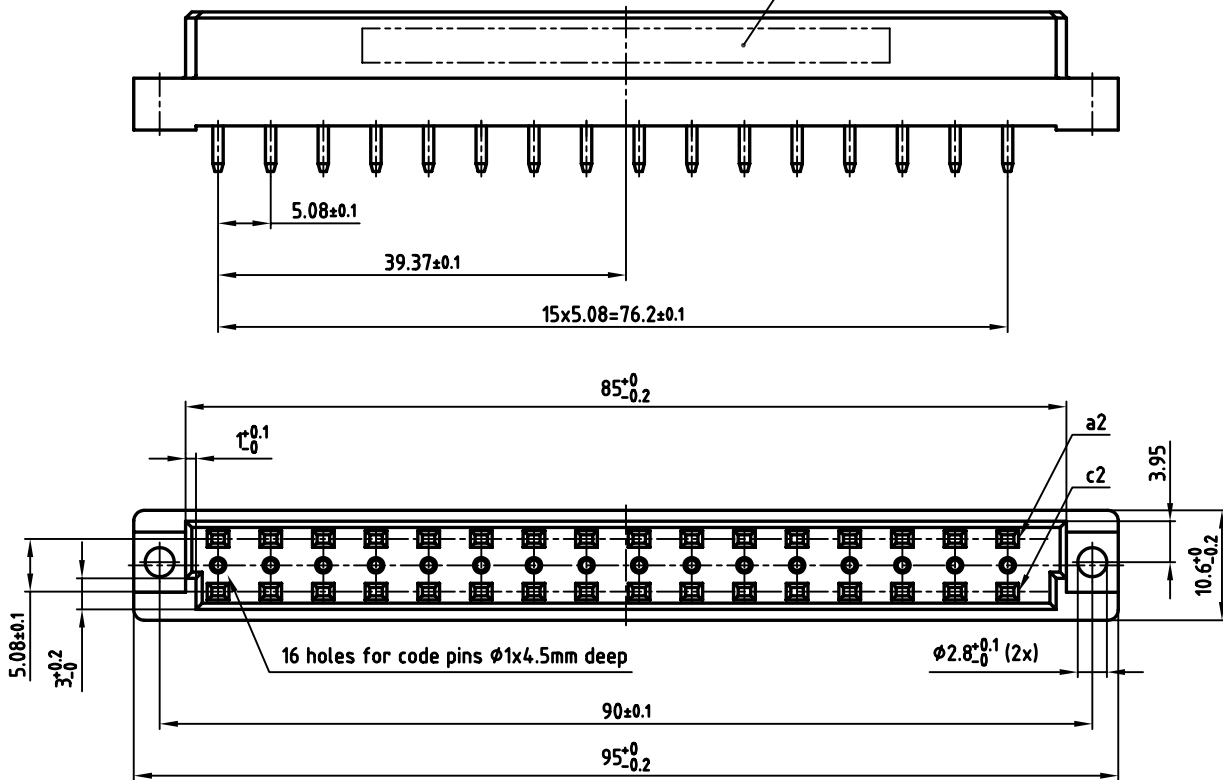
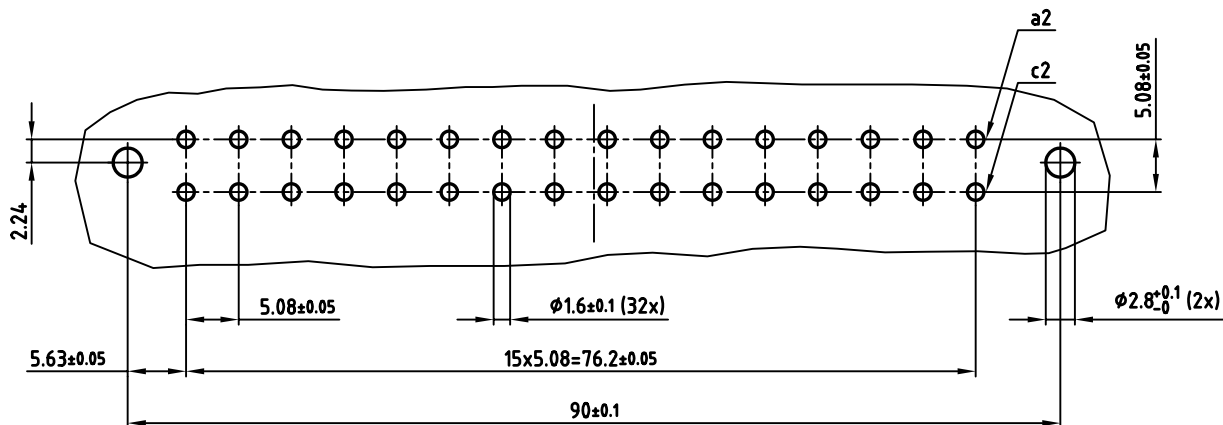


SEE NOTE 3



NOTES:

- 1. INSULATORS: PBTP UL 94 V-0, GREY
- 2. CONTACTS: COPPER ALLOY  
PLATING: GOLD OVER NICKEL  
50 MATING CYCLES
- 3. CONNECTOR IS PART MARKED: 122A10949X CONEC ABC



APPROVAL # FREIGABE # DEBLOCAGE # AUTORIZACION # APPROVAL	
CUSTOMER APPROVAL DATE:	
NAME:	TITLE:
COMPANY NAME:	
APPROVAL # FREIGABE # DEBLOCAGE # AUTORIZACION # APPROVAL	

THIS DRAWING MAY NOT BE COPIED OR REPRODUCED IN ANY WAY, AND MAY NOT BE PASSED ON TO A THIRD PARTY, WITHOUT WRITTEN PERMISSION.  
OWNERSHIP AND COPYRIGHT OF CONEC Gmbh  
DO NOT ALTER CAD DRAWING BY HAND

rev.	description	date	name

tolerance			dim. in mm
2004	date		
drawn	16.09.	name	
appd.	16.09.	Kühle	
norm	DIN EN 60603		
d-old			

scale:	2:1		
material:	SEE NOTES		
title:	FEMALE CONNECTOR TYPE "D" 32pos. SOLDER PIN 4mm $\phi 1$ mm		
dwg no:	AutoCAD 2004	DIN-A	
	12K1A319	3	
		sh: 1/1	
part no:	122A10949X		