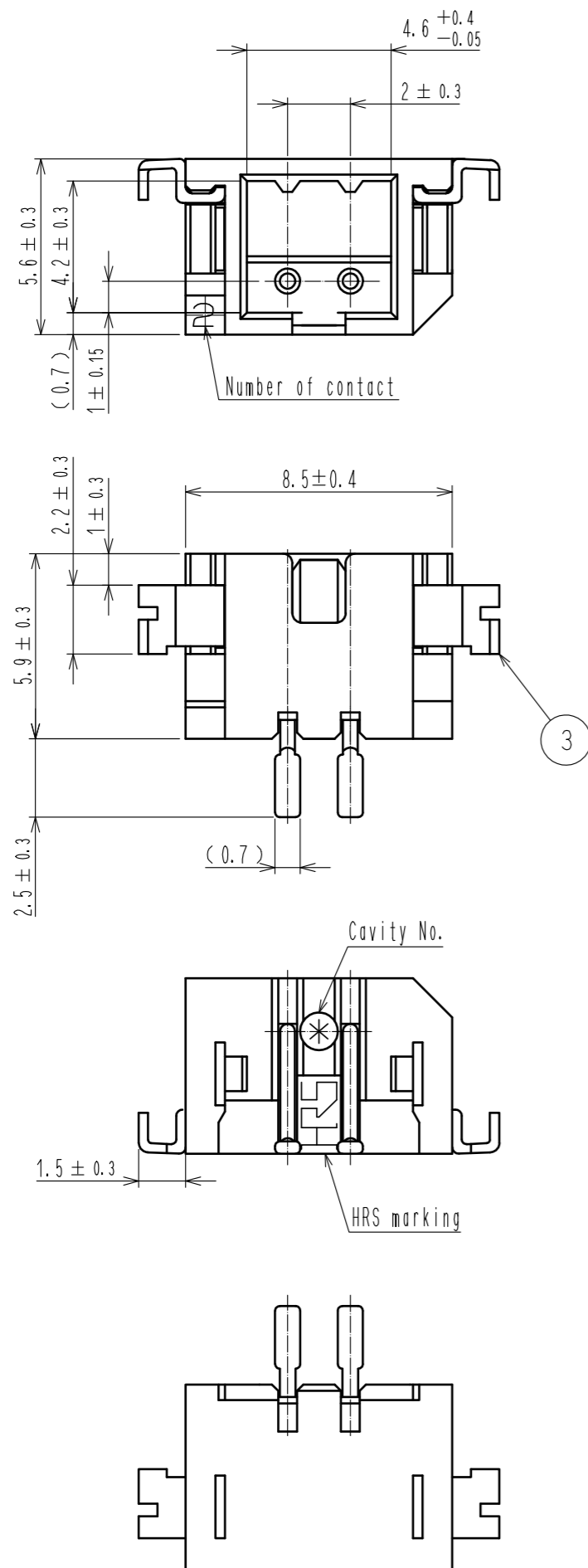
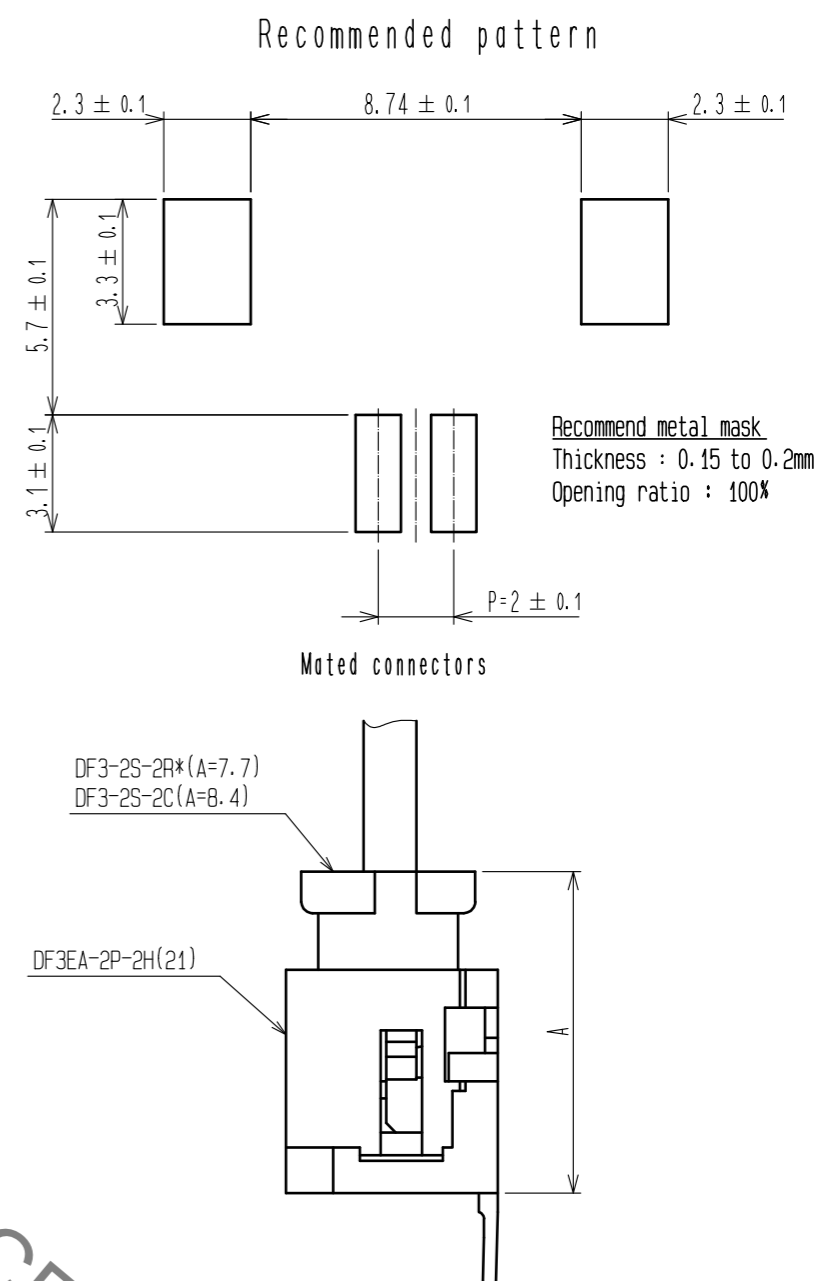


Jul.1.2020 Copyright 2020 HIROSE ELECTRIC CO., LTD. All Rights Reserved.
 In case of consideration for using Automotive equipment / device which demand high reliability, kindly contact our sales window correspondents.



HRS DRAWING FOR REFERENCE

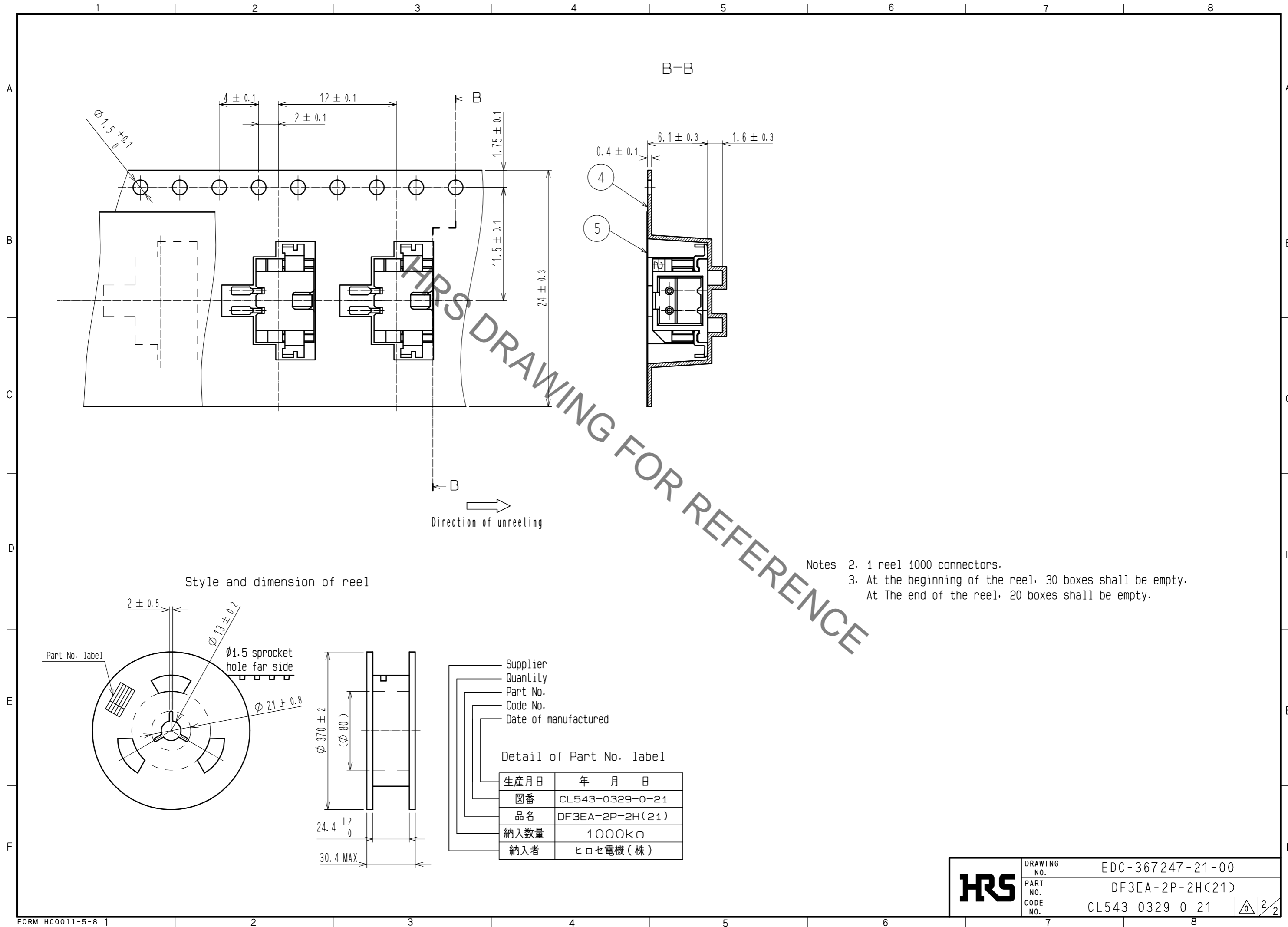


Notes 1. Lead co-planarity include reinforced metal fittings shall be 0.1mm MAX.

NO.	MATERIAL	FINISH . REMARKS	NO.	MATERIAL	FINISH . REMARKS
2	Brass	Surface: Tin plated 1μm MIN (Under plating) Copper plated 0.5μm MIN	5	Polyester	Clear (Cover tape)
1	Polyamide	Natural (Beige), UL94V-0	4	PS	Clear (Embossed carrier tape)
			3	Brass	Surface: Tin plated 1μm MIN (Under plating) Nickel plated 1μm MIN

UNITS	SCALE	COUNT	DESCRIPTION OF REVISIONS	DESIGNED	CHECKED	DATE
mm	5 : 1	△				
APPROVED : HS. OKAWA			17.06.29	DRAWING NO. EDC-367247-21-00		
CHECKED : TS. FUKUSHIMA			17.06.29	PART NO. DF3EA-2P-2H(21)		
DESIGNED : TO. KUROMATSU			17.06.29	CODE NO. CL543-0329-0-21		
DRAWN : TO. KUROMATSU			17.06.29	△ 1/2		

Jul.1.2020 Copyright 2020 HIROSE ELECTRIC CO., LTD. All Rights Reserved.
 In case of consideration for using Automotive equipment / device which demand high reliability, kindly contact our sales window correspondents.



HRS DRAWING FOR REFERENCE

- Notes
- 1 reel 1000 connectors.
 - At the beginning of the reel, 30 boxes shall be empty.
 - At The end of the reel, 20 boxes shall be empty.

Supplier
Quantity
Part No.
Code No.
Date of manufactured

Detail of Part No. label

生産月日	年 月 日
☒番	CL543-0329-0-21
品名	DF3EA-2P-2H(21)
納入数量	1000K□
納入者	ヒロセ電機(株)

HRS	DRAWING NO.	EDC-367247-21-00
	PART NO.	DF3EA-2P-2H(21)
	CODE NO.	CL543-0329-0-21
		△ 2/2