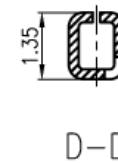
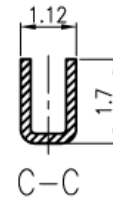
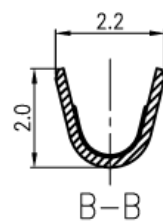
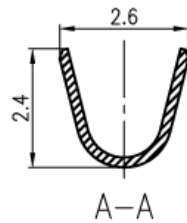
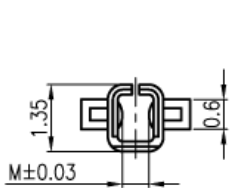


Specifications:

Current Rating: 5.0A AC/DC #22AWG
 Voltage Rating: 250V AC/DC
 Contact Resistance: 10m ohm. max.
 Withstanding Voltage: 1,500V AC/minute
 Operating Temperature Range: -25°C~+85°C
 Application Wires: AWG 20 to 24
 Mates With 5560 Series Housing
 Material and Finish
 Contact: Phosphor Bronze
 Finish: Tin Plated
 Packing: 10,000pcs/Reel



Part No.	M
MF30-HF1T	0.59
MF30-HF1T-A	0.54

TOLERANCE (mm)	APPROVALS	DATE	TITLE 3.0 Power Connector Female Terminal	AMPHENOL Amphenol European Design Center	
X. ±0.3	DRAWN Stephane	28/Dec/2008			
XX ±0.2	CHECKED Rob	28/Dec/2008			
X.XX ±0.15	APPROVED Rob	28/Dec/2008			
UNLESS OTHERWISE SPECIFIED	UNIT: mm		SIZE: A4	DRAWING N° MF30-HF1T	Scale N.A. Sheet 1 of 1 REV. A