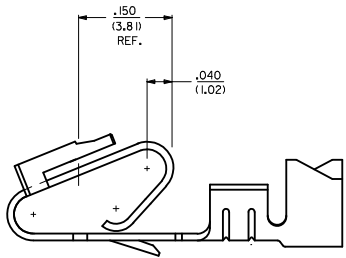
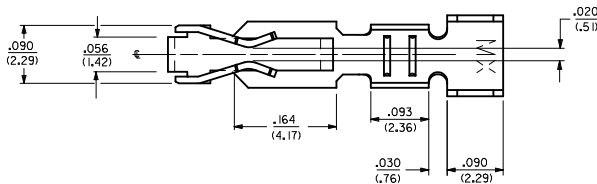
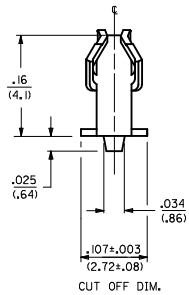


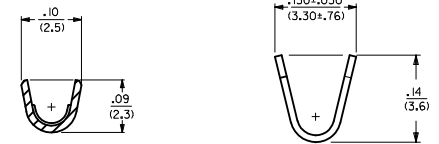
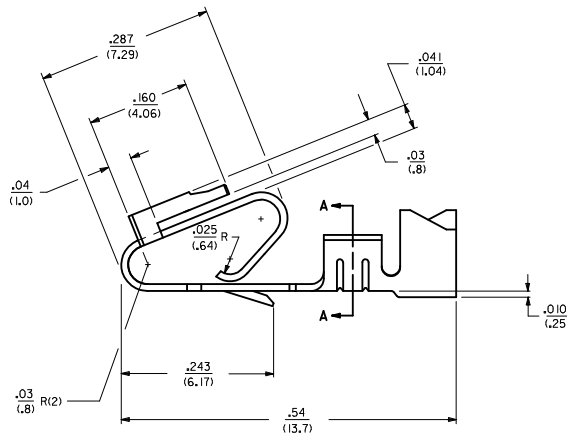
ALTERNATE GEOMETRY
SEE NOTE 10



SELECTIVE PLATING
LOCATION



CUT OFF DIM.



SECTION A-A

- NOTES:
 1. MATERIAL: SEE LEGEND
 2. FINISH:
 909 - OVERALL HOT TIN DIP: .000100/(0.00254) MIN.
 102 - OVERALL TIN: .000200/(0.00508) MIN.
 OVERALL COPPER: .000100/(0.00254) MIN.
 132 - OVERALL TIN: .000200/(0.00508) MIN.
 OVERALL COPPER: .000200/(0.00508) MIN.
 503 - OVERALL HARD GOLD: .000030/(0.00076) MIN.
 OVERALL NICKEL: .000050/(0.00127) MIN.
 550 - SELECT HARD GOLD: .000015/(0.00038) MIN.
 OVERALL NICKEL: .000030/(0.00076) MIN.
 OVERALL HARD GOLD FLASH: .000002/(0.00005) MIN.
 555 - SELECT HARD GOLD: .000015/(0.00038) MIN.
 OVERALL NICKEL: .000030/(0.00076) MIN.
 558 - SELECT HARD GOLD: .000030/(0.00076) MIN.
 OVERALL NICKEL: .000050/(0.00127) MIN.
 OVERALL HARD GOLD FLASH: .000002/(0.00005) MIN.
 561 - SELECT HARD GOLD: .000030/(0.00076) MIN.
 OVERALL NICKEL: .000050/(0.00127) MIN.
 3. PRODUCT SPECIFICATION: PS-40-02
 4. PACKAGING SPECIFICATION: CHAIN FORM: SEE PK-6838-001
 LOOSE FORM: SEE PK-2759-001
 5. TERMINAL FOR USE IN HOUSING SERIES 6442 AND 47695.
 6. SEE 7258 SERIES FOR THIS PART WITH CRIMP FOR 22-26 AWG. WIRE.
 7. CRIMP FOR 18 TO 20 GA. WIRE WITH MAX. INSULATION DIA. OF .100/(2,79).
 STRIP LENGTH OF .125/100 / (3.18/2,54)
 8. DIMENSIONS GIVEN ACROSS CENTERLINES ARE SYMMETRICAL ABOUT
 THOSE CENTERLINES WITHIN HALF THE TOTAL TOLERANCE.
 9. THIS PART CONFORMS TO CLASS B REQUIREMENTS OF COSMETIC SPECIFICATION PS-45499-002.
 10. ALTERNATE GEOMETRY PRESENT ON SOME PART NUMBERS. SEE SHEET 2.

LEGEND: 6838- (+) (+) (+)

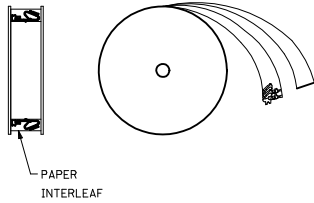
WINDING
 A= PER DETAIL A
 BLANK= PER DETAIL B

FORM
 BLANK= CHAIN
 L= LOOSE

PLATING
 SEE NOTE 2

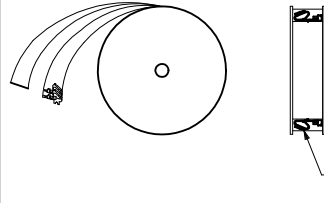
MATERIAL:
 (.271/.0106 THK
 BLANK=BRASS
 A=PHOS BRONZE

WINDING DETAIL 'A'



PAPER
INTERLEAF

WINDING DETAIL 'B'



PAPER
INTERLEAF

ADD ALT. GEOMETRY EC NO. UCF2011-0681 DRAWN BY: CHYKSSOUSEK 2010/09/14 2011/02/23 APPROVED BY: APPR:FSMTH 2011/02/25 AQ	QUALITY SYMBOLS ▽=0 ▽=0	GENERAL TOLERANCES (UNLESS SPECIFIED)		DIMENSION STYLE IN/MM	SCALE ---	DESIGN UNITS INCH	THIRD ANGLE PROJECTION	
		4 PLACES ± --- ± ---	3 PLACES ± --- ± .010	DRAWN BY GUZIK	DATE 11/15/89	TITLE TRIFURCON TERMINAL CRIMP TYPE, .156 CENTERS 18 TO 20 AWG WIRE		
		2 PLACES ± 0.25 ± .015	1 PLACE ± 0.36 ± ---	CHECKED BY PATEL	DATE 11/15/89	MOLEX INCORPORATED		
		ANGULAR ±1/2°		APPROVED BY LENZ	DATE 11/15/89	MATERIAL NO. SEE CHART		
DRAFT WHERE APPLICABLE MUST REMAIN WITHIN DIMENSIONS		MATERIAL NO. SEE CHART		DOCUMENT NO. SD-6838		SHEET NO. 1 OF 2		

6838-(*)**

PART NO.	ENG. NO.	
08-50-0187	6838-(P909)	SEE NOTE 1
08-50-0189	6838-(P909)L	SEE NOTE 1
08-50-0275	6838-(P909)-A	
08-50-0026	6838-(P102)	
	6838-(P102)L	
08-50-0028	6838-(102)	
08-50-0029	6838-(102)L	

6838-A(*)**

PART NO.	ENG. NO.	
08-58-0187	6838-A(P558)	
08-58-0189	6838-A(P558)L	
08-60-0001	6838-A(132)	
08-60-0002	6838-A(132)L	
08-58-0102	6838-A(558)	
	6838-A(558)L	
08-58-0108	6838-A(503)	
08-58-0109	6838-A(503)L	
08-52-0112	6838-A(P909)	SEE NOTE 1
08-52-0113	6838-A(P909)L	SEE NOTE 1
08-50-0024	6838-A(102)	
08-50-0251	6838-A(102)L	
08-58-0105	6838-A(P555)	
08-58-0106	6838-A(P555)L	
08-58-0110	6838-A(P561)	SEE NOTE 1
08-58-0111	6838-A(P561)L	SEE NOTE 1
08-58-0118	6838-A(561)	
08-58-0119	6838-A(561)L	
08-58-0131	6838-A(550)	
08-58-0132	6838-A(550)L	

NOTES:

1. PART MANUFACTURED WITH ALTERNATE GEOMETRY. SEE SHEET 1.

ADD ALT. GEOMETRY IEC NO. UCFP2011-0681 DRAWN/KIPPER 2010/09/14 CHKD/SSOUSEK 2011/02/23 APPR/FSMTH 2011/02/25	QUALITY SYMBOLS ▽=0 ▽=0	GENERAL TOLERANCES (UNLESS SPECIFIED)		DIMENSION STYLE IN/MM	SCALE ---	DESIGN UNITS INCH	THIRD ANGLE PROJECTION	
		4 PLACES #---#---#---#--- 3 PLACES #---#---#---#--- 2 PLACES #---#---#---#--- 1 PLACE #---#---#---#---	mm INCH	DRAWN BY DATE GUZIK 11/15/89	TITLE TRIFURCON TERMINAL CRIMP TYPE, .156 CENTERS 18 TO 20 AWG WIRE			
		ANGULAR ±1/2°	CHECKED BY DATE PATEL 11/15/89	MOLEX INCORPORATED				
		DRAFT WHERE APPLICABLE MUST REMAIN WITHIN DIMENSIONS	APPROVED BY DATE LENZ 11/15/89	MATERIAL NO. SEE CHART	DOCUMENT NO. SD-6838	SHEET NO. 2 OF 2		

THIS DRAWING CONTAINS INFORMATION THAT IS PROPRIETARY TO MOLEX INCORPORATED AND SHOULD NOT BE USED WITHOUT WRITTEN PERMISSION