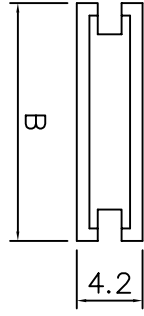
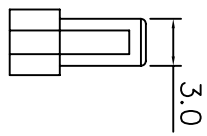
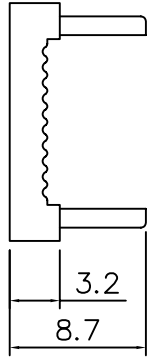
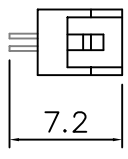
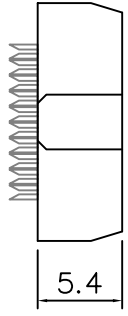
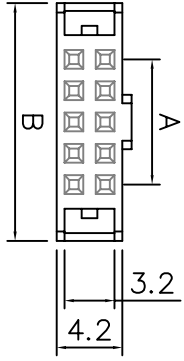


This document is the property of Amphenol Corporation and is delivered on the express condition that it is not to be disclosed, reproduced or used, in whole or in part, for the manufacture or sale by anyone other than Amphenol Corporation without its prior consent, and that no right is granted to disclose or to use any information in this document.



**Dimensions**

Positions	A	B
06	4.0	11.20
08	6.0	13.20
10	8.0	15.20
12	10.0	17.20
14	12.0	19.20
16	14.0	21.20

Positions	A	B
18	16.0	23.20
20	18.0	25.20
22	20.0	27.20
24	22.0	29.20
26	24.0	31.20
28	26.0	33.20

Positions	A	B
30	28.0	35.20
32	30.0	37.20
34	32.0	39.20
38	36.0	43.20
40	38.0	45.20
44	42.0	49.20

Positions	A	B
50	48.0	55.20
60	58.0	65.20
62	60.0	67.20
64	62.0	69.20
68	66.0	73.20

**Product Specification**

**Material**

Insulator :Glass-Filled Thermoplastic  
PBT, UL94V-0 rates

Contact :Brass or Phosphor Bronze  
Plated full gold or selected gold in  
mating area, 100u" min. tin plated  
on termination area, with entire contact  
under-plated 50u" min. Nickel

**Electrical**

Contact Resistance :20 milliohms

Max at 1 AMP DC.

Insulation Resistance :5000  
megohms at 500 VDC

Dielectric Withstanding Voltage :  
250 VAC/rms 60HZ for 1 minute

Current Rating :3 AMP

Voltage Rating :250 VAC/rms 60HZ

**T826 X XX XX XX C EU**

IDC Socket:  
2.00mm Pitch

Housing Color

0: Grey w CPK

1: Black w CPK

2: Grey w/o CPK

3: Black w/o CPK

CPK=Central Polarization Key

No of Positions:

06: 6 positions

...

68: 68 positions

Plating Options:

A1: Flash Gold

A2: 15u"/0.4um Gold

A3: 30u"/0.8um Gold

SN:Tin

EU: RoHS  
Compliant

Variation Code:  
00: W/O Strain Relief  
01: With Strain Relief



TOLERANCE (mm)	APPROVALS	DATE	TITLE
X. ±0.3	GRANTED Roger	24/Nov/2006	IDC Socket
X.X ±0.2	CHECKED Rob K.	27/Nov/2006	
X.XX ±0.15	APPROVED Rob K.	28/Nov/2006	

UNLESS OTHERWISE SPECIFIED	UNITS: mm	SIZE: A4	DRAWING N°: T826 Series	REV: A
----------------------------	-----------	----------	-------------------------	--------

**AMPHENOL**  
Amphenol European  
Design Center

Scale N.A. Sheet 1 of 1