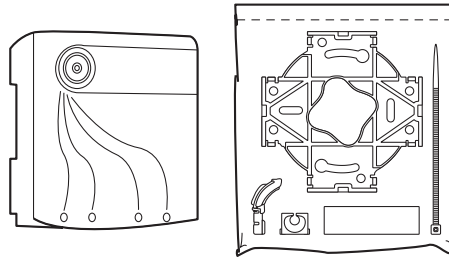


Optical telecommunications outlet

Catalogue number(s): 4 130 50/51



4 130 50/51

1. INTRODUCTION

The optical telecommunications outlet is a telecommunications outlet for FTTH networks, for connecting 1 to 4 fibres. It acts as the interface point between the subscriber drop and the subscriber cord.

The outlet can be installed on a 35 mm DIN rail in a communication panel, on a wall or on skirting. It protects and holds the connectors in position, and enables fibres to be coiled on two separate levels as well as the addition of heat-shrinkable protection or mechanical splices.

2. SELECTION CHART

Description	Cat. Nos
OTO with 1 SC/APC connector	413 050
OTO with 4 SC/APC connectors	413 051

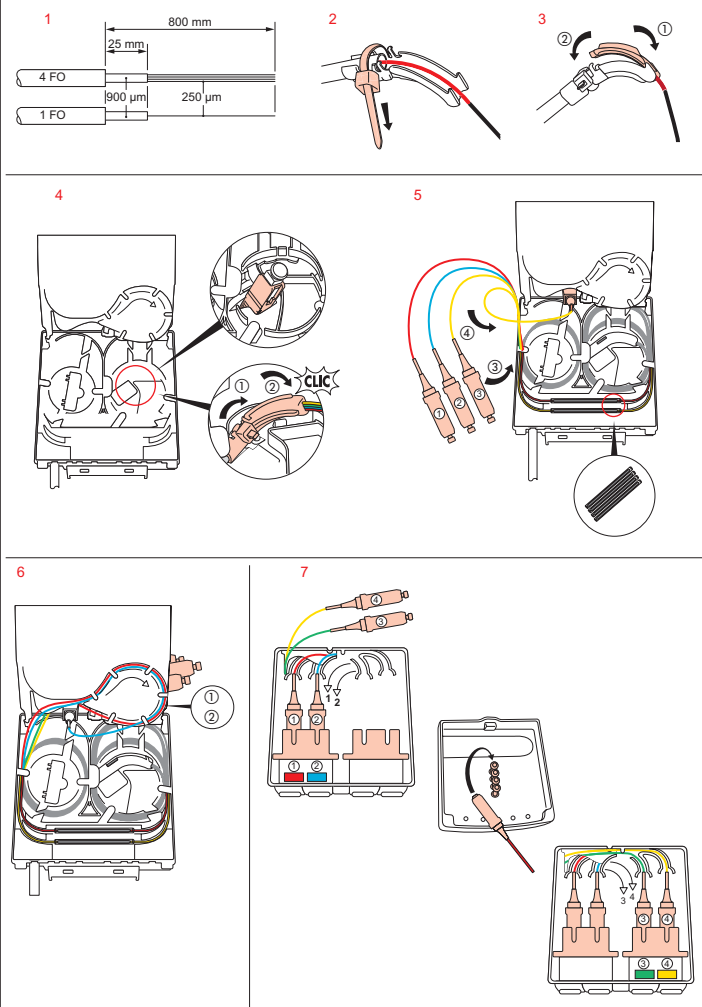
3. DESCRIPTION

The optical telecommunications outlet consists of a socket which is fixed onto a base or directly onto a 35 mm DIN rail. The plate, pivoting on this socket, is used to adjust fibres that are too long and ensures the plugs fit correctly in the connectors. The plate can take up to 2 SC Simplex or 2 SC Duplex connectors. The outlet provides simple, safe conditions for setup and subsequent adjustment.

4. ADVANTAGES

- Very easy to fix on 35 mm DIN rail or any other support, without opening the casing
- The incoming cable can come from any side or the rear
- Supplied pre-wired or unwired
- Protective flaps incorporated in the casing enabling standard connectors to be used
- Simple and easy to use
- Capacity: 1 to 4 fibres
- Connectors easy to identify due to external identification system
- Mounted and removed in closed position: protecting internal components
- Elegant design
- Available in pre-wired version with several possible cable lengths

5. SETUP AND CONNECTION



6. TECHNICAL FEATURES

6.1 Specifications:

Overall dimensions H x W x D (mm)	90 x 82 x 32
Casing material	ABS-PC
Colour	RAL 9010
Protection index	IP44
Impact resistance	IK05
Capacity	1, 2 or 4 x 900 µm fibres 2 SC Duplex or 2 SC simplex connectors
Radius of curvature	≥ 15 mm
Tensile strength on the cable	≥ 10 daN
Fixing	Fixing centres 60 mm

6.2 Climatic features

Usage temperature: + 5°C to + 40°C

Storage temperature: - 25°C to + 70°C