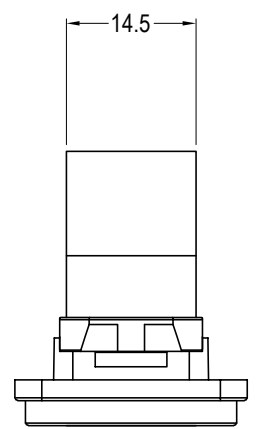
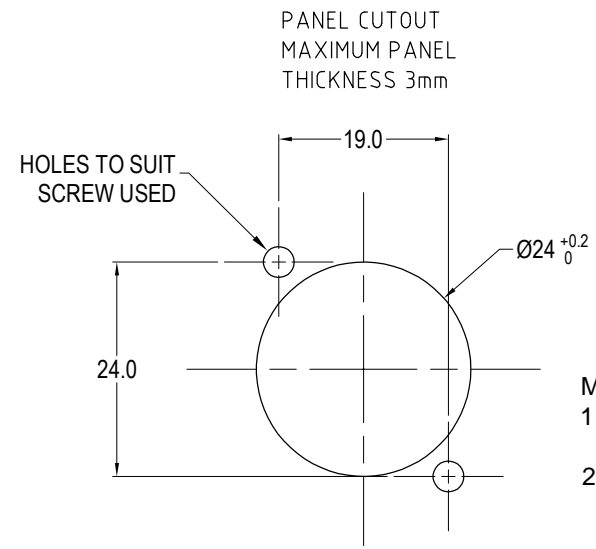


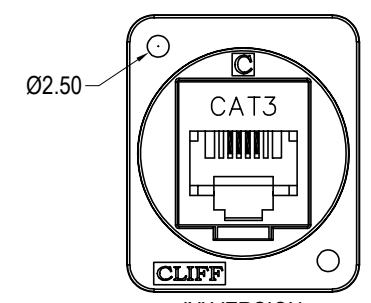
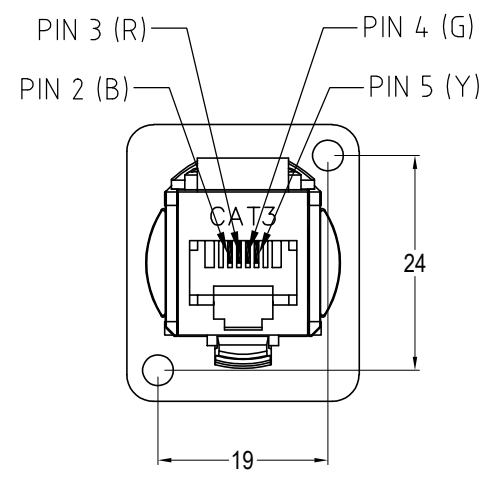
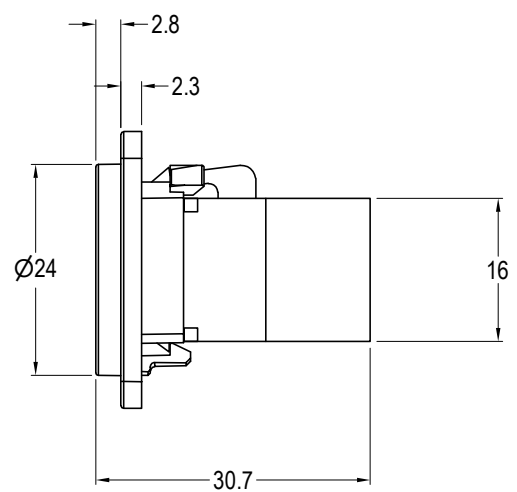
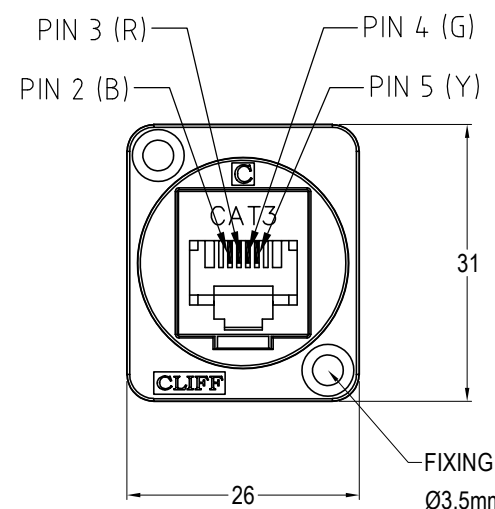
ISS.	AMEND	DATE
1	ISSUED	31/01/19
2	ADD MIN MAX TEMP	30/06/20



Material:

1. RJ11 In-Line Coupler:
PC/ABS, UL 94V-0, Black colour
2. RJ11 In-Line Coupler Contact:
Phosphor Bronze, 3-50 micro inches
gold plating over nickel plate.
3. PCB: FR4, UL 94V-0
4. Frame: Polyamide 94V-2
5. Operating Temperatures: Min -10°C Max +60°C

VARIANTS	
PART NO.	HOLE DETAILS
CP30223	HOLE Ø3.50 X CSK 82° X Ø5.85
CP30223X	PLAIN HOLE Ø2.50



'X' VERSION
Ø2.5 PLAIN HOLES

FIXING HOLE VARIANTS:
Ø3.5mm CSK 82° x Ø5.85
'X' VERSION HAS Ø2.5 PLAIN HOLES.

RoHS
COMPLIANT

TOLERANCE
NO DEC. PLACE ±
1 DEC. PLACE ±
2 DEC. PLACE ±
HOLE Ø ±
ANGLES ±
UNLESS
OTHERWISE STATED

Cliff Electronic Components Ltd.

76 Holmethorpe Avenue, Holmethorpe Industrial Estate,
Redhill, Surrey, RH1 2PF, England, UK
Tel: 01737-771375 Fax: 01737-766012 Website: www.cliffuk.co.uk

DIMENSIONS IN MILLIMETERS UNLESS OTHERWISE STATED. WORK TO DIMENSIONS. REMOVE ALL BURRS. IF IN DOUBT ASK.

3rd ANGLE PROJECTION:

MATERIAL: See Notes
FINISH: See Notes

TITLE: FEED THROUGH CAT3 RJ11 6P4C

THE CONTENTS OF THIS DOCUMENT MUST NOT BE COPIED OR DISCLOSED TO A 3rd PARTY WITHOUT WRITTEN PERMISSION OF CLIFF UK. © 2019

DRAWN: T.J.O.

APPROVED: D.P.J.

DRWG. No. **CP30223** FORM: A4DRWGH