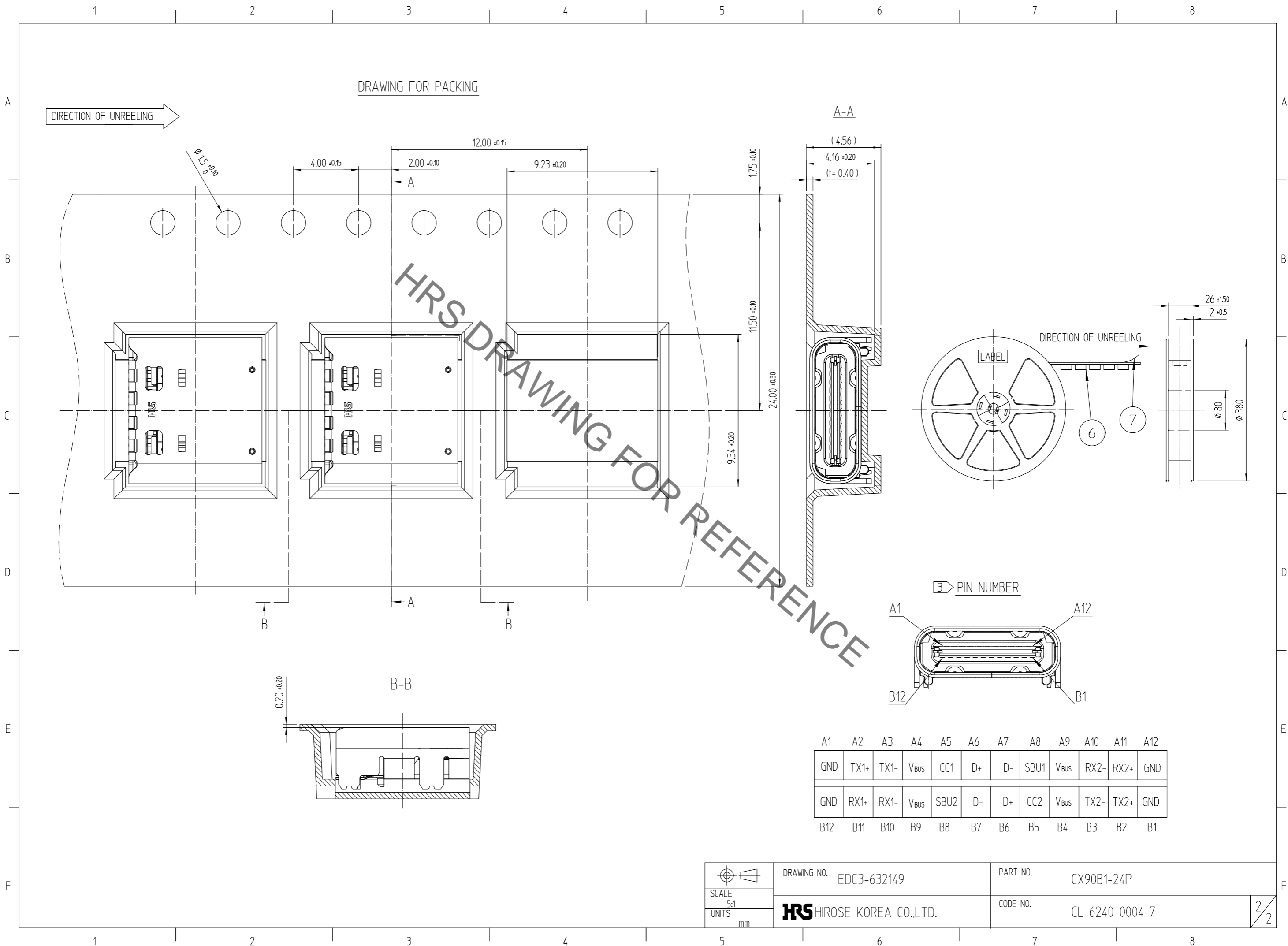


△數 COUNT	訂正事項 DESCRIPTION OF REVISIONS	擔當 B Y	檢圖 CHKD	年月日 DATE	△數 COUNT	訂正事項 DESCRIPTION OF REVISIONS	擔當 B Y	檢圖 CHKD	年月日 DATE
△7	- revised	BJH	KHJ	17. 03. 30	△8	- revised	BJH	LHJ	17. 05. 24
△8	- revised	BJH	KHJ	17. 04. 05	△9	3 revised	KHJ	LHJ	18. 01. 30
△9	- revised	BJH	LHJ	17. 05. 11					

NO.	DESCRIPTION	MATERIAL	FINISH	REMARKS
7	COVER TAPE	PS	-	-
6	EMBOSS TAPE	PS	-	-
5	SHELL	STAINLESS STEEL	△Ni 1-5μm	-
4	GND PLATE	STAINLESS STEEL	-	-
3	CONTACT	COPPER ALLOY	△CONTACT AREA : Au0.05μm Min OVER Pd-Ni0.75μm Min OVER Ni2-5μm SOLDER TAILS : Au0.03μm Min OVER Ni1-5μm	-
2	MID PLATE	STAINLESS STEEL	△Ni 1-5μm	-
1	INSULATOR	THERMAL PLASTIC	UL94V-0, BLACK COLOR	-

SCALE	DRAWING NO.	PART NO.	DRAWN	DESIGNED	CHECKED	APPROVED	RELEASED
5:1	EDC3-632149	CX90B1-24P	H.J.KIM	KNJ.CHIKAWA	H.J.LEE	T.S.KANG	DEPT 18.03.08 ENG
UNITS mm	HIROSE KOREA CO.,LTD.	CODE NO. CL 6240-0004-7	16.06.07	16.06.07	16.06.07	16.06.07	1/2

Jul.1.2020 Copyright 2020 HIROSE ELECTRIC CO., LTD. All Rights Reserved.
 In case of consideration for using Automotive equipment / device which demand high reliability, kindly contact our sales window correspondents.



 SCALE 5:1 UNITS mm	DRAWING NO. EDC3-632149 HRS HIROSE KOREA CO.,LTD.	PART NO. CX90B1-24P CODE NO. CL 6240-0004-7
---------------------------------	---	--