



## RJ45 Outdoor Patch Cable Connector, Waterproof

### Technical Features

2x Shielded RJ45 female jack

Compliant with ANSI/TIA/EIA 568C standard

IP67 Waterproof

For cable diameters from 3 to 8mm

Housing: Nylon PA66 (UL94V-0)

Contact Needle: OD 0.5mm Phosphorus copper

Shield Cover: Nickel plated over 0.25mm copper alloy

Golden-plated on the contact needle: 6u" inch

Waterproof Ring: Silica gel

Contact Resistance: <10 mΩ

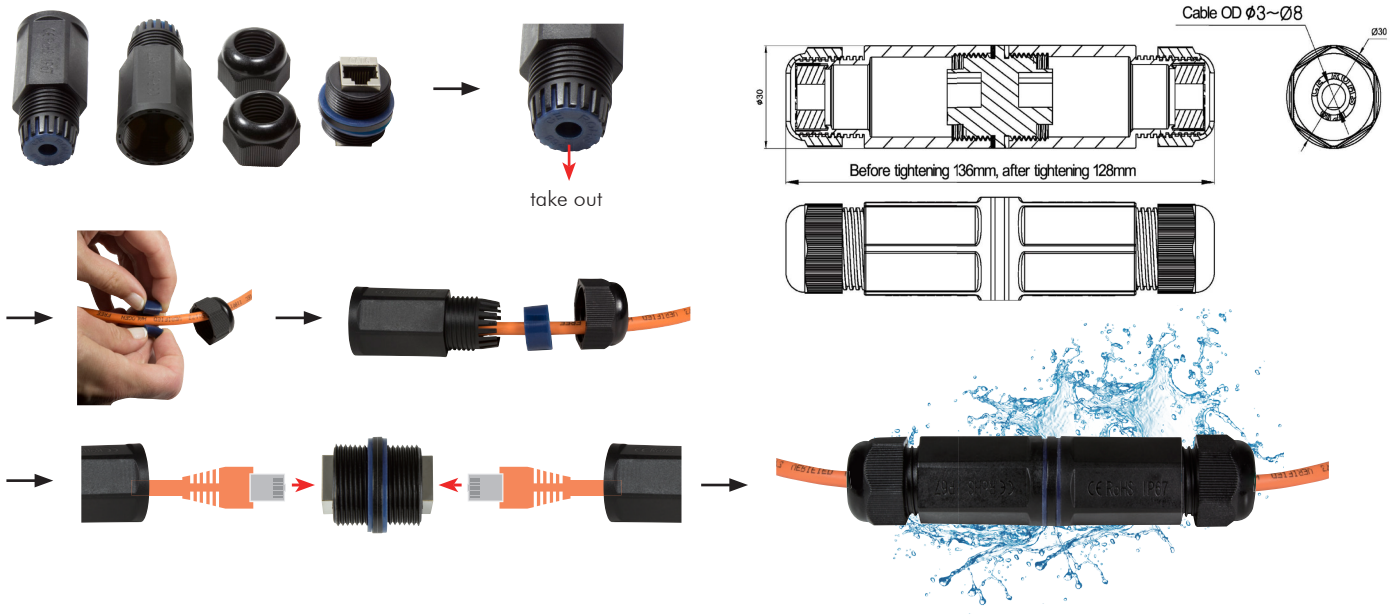
Working Temperature: -40–105°C

Storage Temperature: -40–105°C

Existing RJ45 patch cable can be used

Art No.	Connector Standard	Transfer Speed	EAN Code
NP0080	Category 6	10 Base-T, 100 Base-T, 1000 Base-T	4052792044348
NP0081	Category 6A	10 Base-T, 100 Base-T, 1000 Base-T, 10000 Base-T	4052792055337

## Instructions



## Package Content

RJ45 Waterproof Connector x 1

## Packaging Information

Packing Dimension	100 x 100 x 30mm
Packing Weight	0.06kg
Carton Dimension	500 x 370 x 270mm
Carton Q'ty	200pcs
Carton Weight	12.5kg



[www.logilink.com](http://www.logilink.com)



RoHS  
compliant

