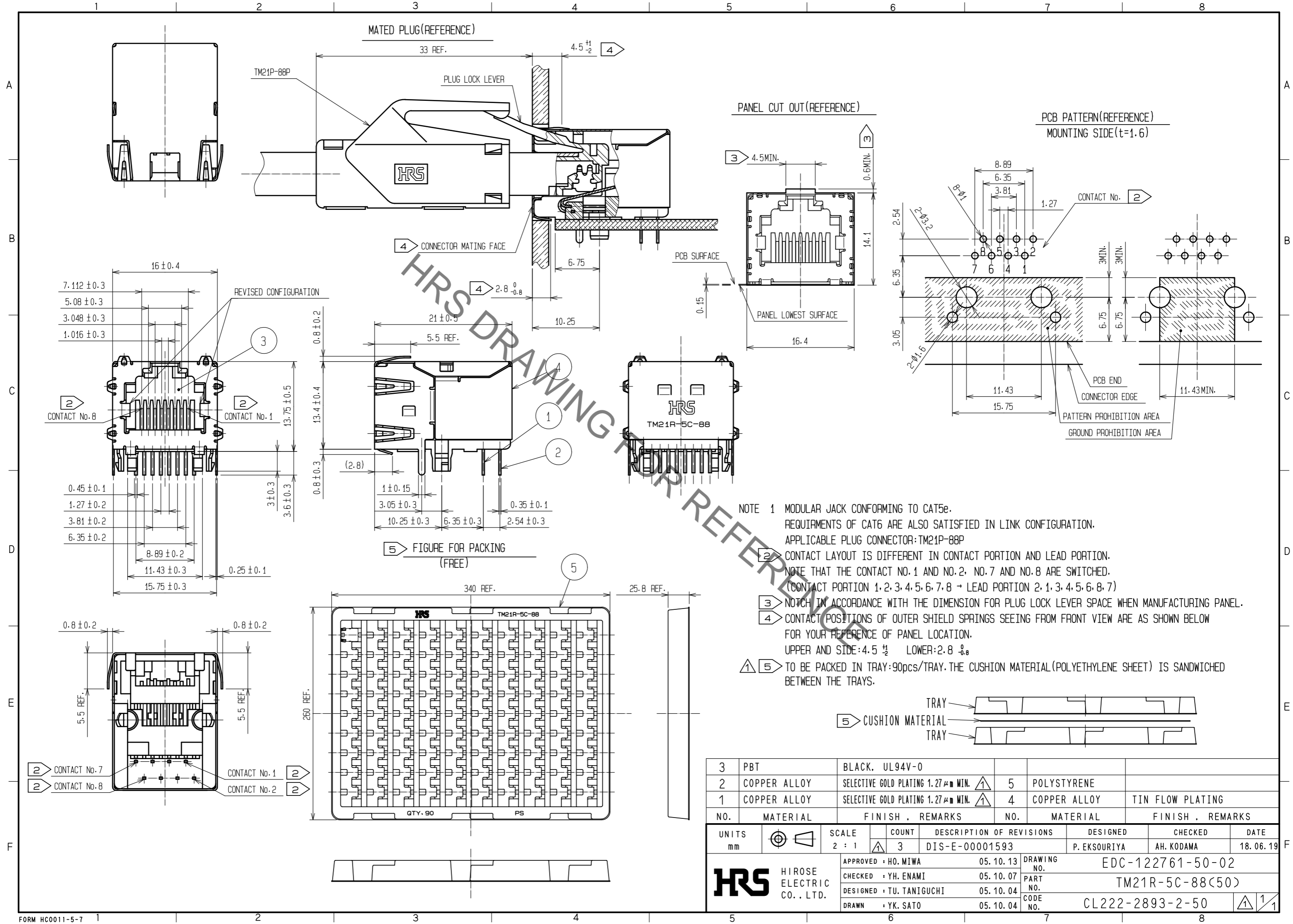


Jul.1.2020 Copyright 2020 HIROSE ELECTRIC CO., LTD. All Rights Reserved.  
 In case of consideration for using Automotive equipment / device which demand high reliability, kindly contact our sales window correspondents.



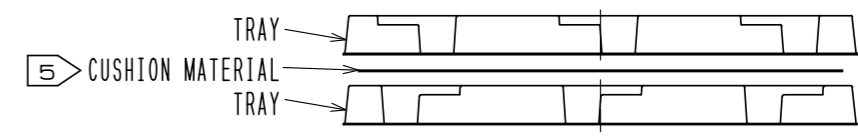
NOTE 1 MODULAR JACK CONFORMING TO CAT5e.  
 REQUIRMENTS OF CAT6 ARE ALSO SATISFIED IN LINK CONFIGURATION.  
 APPLICABLE PLUG CONNECTOR:TM21P-88P

2 CONTACT LAYOUT IS DIFFERENT IN CONTACT PORTION AND LEAD PORTION.  
 NOTE THAT THE CONTACT NO.1 AND NO.2, NO.7 AND NO.8 ARE SWITCHED.  
 (CONTACT PORTION 1,2,3,4,5,6,7,8 → LEAD PORTION 2,1,3,4,5,6,8,7)

3 NOTCH IN ACCORDANCE WITH THE DIMENSION FOR PLUG LOCK LEVER SPACE WHEN MANUFACTURING PANEL.

4 CONTACT POSITIONS OF OUTER SHIELD SPRINGS SEEING FROM FRONT VIEW ARE AS SHOWN BELOW  
 FOR YOUR REFERENCE OF PANEL LOCATION.  
 UPPER AND SIDE:4.5  $\frac{+1}{-2}$  LOWER:2.8  $\frac{0}{-0.8}$

5 TO BE PACKED IN TRAY:90pcs/TRAY.THE CUSHION MATERIAL(POLYETHYLENE SHEET) IS SANDWICHED BETWEEN THE TRAYS.



3	PBT	BLACK, UL94V-0			
2	COPPER ALLOY	SELECTIVE GOLD PLATING 1.27 $\mu$ m MIN. $\triangle$	5	POLYSTYRENE	
1	COPPER ALLOY	SELECTIVE GOLD PLATING 1.27 $\mu$ m MIN. $\triangle$	4	COPPER ALLOY	TIN FLOW PLATING
NO.	MATERIAL	FINISH . REMARKS	NO.	MATERIAL	FINISH . REMARKS
UNITS mm	$\odot$ $\triangle$	SCALE 2 : 1	COUNT $\triangle$ 3	DESCRIPTION OF REVISIONS DIS-E-00001593	DESIGNED P. EKSOURIYA
					CHECKED AH. KODAMA
					DATE 18.06.19
APPROVED : HO. MIWA		05.10.13	DRAWING NO. EDC-122761-50-02		
CHECKED : YH. ENAMI		05.10.07	PART NO. TM21R-5C-88(50)		
DESIGNED : TU. TANIGUCHI		05.10.04	CODE NO. CL222-2893-2-50		
DRAWN : YK. SATO		05.10.04			