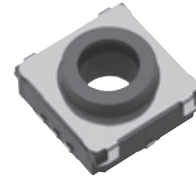


### 10 mm Square Center Space Long Travel SMD Light Touch Switches

Type: **EVPAD**



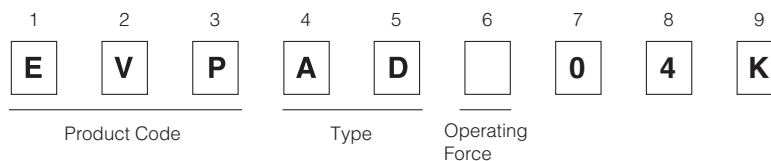
#### ■ Features

- The open center space allows for flexibility in choosing a LED  
Up to a 4.2-mm diameter chip LED can be mounted.
- Provides an excellent operational feel.
  - Crisp tactile feedback
  - Long stroke (1 mm)
- Supports auto reflow soldering.

#### ■ Recommended Applications

- Operating switches for car electronic equipment (car audio systems, car air conditioners, etc.)

#### ■ Explanation of Part Numbers



#### ■ Specifications

Type		Snap action/Push-on type SPST
Electrical	Rating	10 $\mu$ A 2 V DC to 50 mA 12 V DC (Resistive load)
	Contact Resistance	100 m $\Omega$ max.
	Insulation Resistance	100 M $\Omega$ min. (at 100 V DC)
	Dielectric Withstanding Voltage	250 V AC for 1 minute
	Bouncing	10 ms max. (ON, OFF)
Mechanical	Operating Force	4.0 N $\pm$ 0.8 N
	Travel	1.0 mm $\pm$ 0.15 mm
Endurance	Operating Life	100,000 cycles min.
Operating Temperature		-40 °C to +85 °C
Storage Temperature		-40 °C to +85 °C (Bulk) -20 °C to +60 °C (Taping)
Minimum Quantity/Packing Unit		1,000 pcs. Embossed Taping (Reel Pack)
Quantity/Carton		5,000 pcs.

Design and specifications are each subject to change without notice. Ask factory for the current technical specifications before purchase and/or use.  
Should a safety concern arise regarding this product, please be sure to contact us immediately.

## ■ Dimensions in mm (not to scale)

**EVPADK04K** General dimension tolerance :  $\pm 0.2$   
( ) dimensions are reference dimensions.

(Embossed Taping)

LED implementation position

LED implementation area

(Plastic projection)

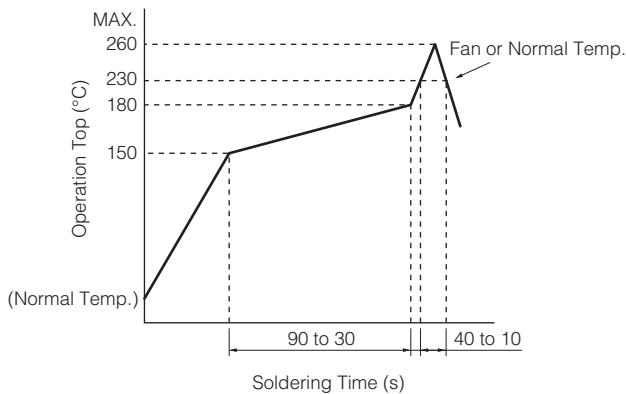
Circuit Diagram

PWB land pattern for reference

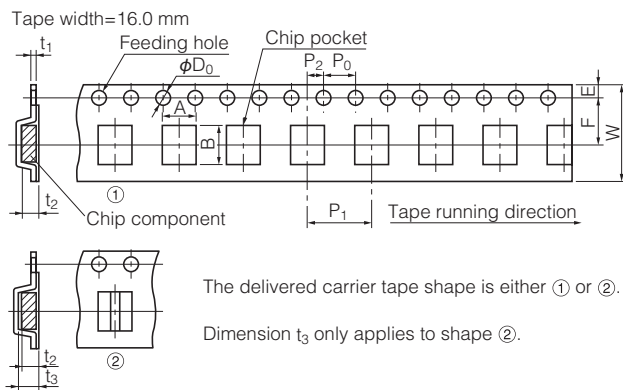
(Precautions for pattern design)

- \* Note that the terminals are exposed at the sections shaded with " "
- \* Establish electrical connection at A1, A2, A3, and A4 to improve the contact performance.

## ■ Recommended Reflow Soldering Conditions



## ● Embossed Carrier Taping



Taping condition : Lack of products in the middle of taping should be one MAX, but total quantity specified in the specifications should be secured.

Peeling off strength of top tape : It should be within 0.2N to 1.0N at 165 degree in peeling off angle.

Joint of carrier tape : One joint per one reel may exist.

Unit: mm

Part No.	Height	A	B	W	F	E	P <sub>1</sub>	P <sub>2</sub>	P <sub>0</sub>	D <sub>0</sub> Dia	t <sub>1</sub>	t <sub>2</sub>	t <sub>3</sub>
EVPAD	4.6	10.7±0.2	10.7±0.2	16.0±0.3	7.5±0.1	1.75±0.10	12.0±0.1	2.0±0.1	4.0±0.1	1.5 <sup>0.1</sup> <sub>0</sub>	0.40±0.05	4.8±0.2	5.8±2.0

Design and specifications are each subject to change without notice. Ask factory for the current technical specifications before purchase and/or use.  
Should a safety concern arise regarding this product, please be sure to contact us immediately.