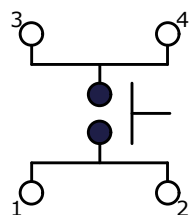
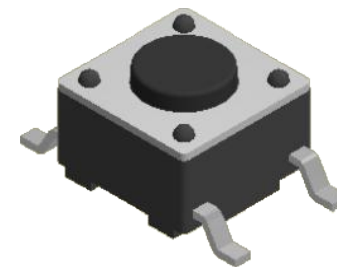
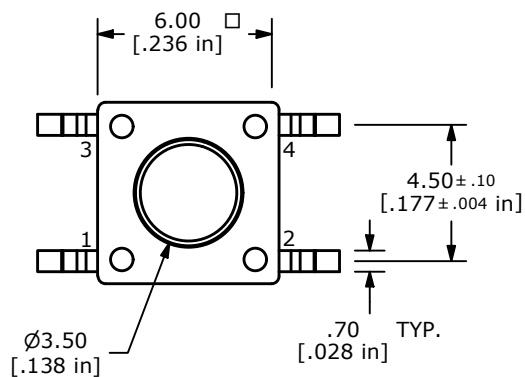
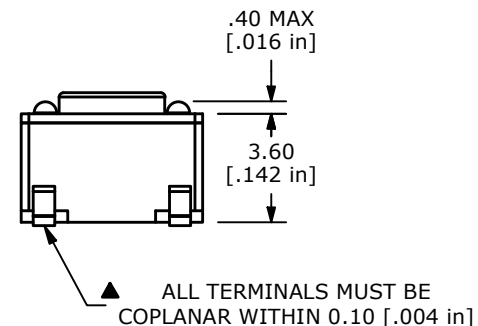
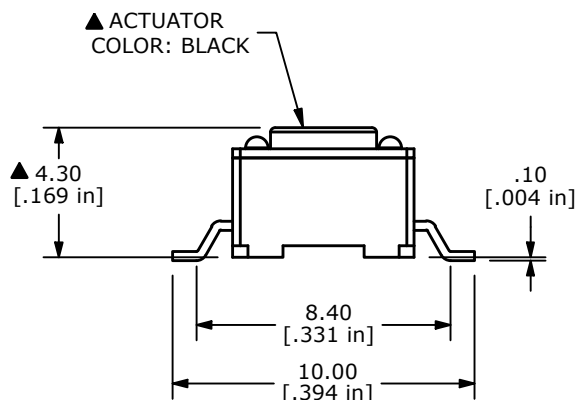


RECOMMENDED P.C.B. LAYOUT



CIRCUIT: SPST



NOTES:

1. ALL DIMENSIONS IN MM
2. GENERAL TOLERANCE: X.X=±0.4
X.XX=±0.25
3. TERM. NUMBERS FOR REFERENCE ONLY.
4. RATING: 50VDC, 50mA
- ▲ 5. OPERATING FORCE: 160 ± 50 gf
6. TRAVEL: 0.25mm +0.2/-0.1mm
7. CONTACT RESISTANCE: 100 MILLI OHMS MAX. (INITIAL)
8. MECHANICAL/ELECTRICAL LIFE 100,000 CYCLES MIN.
- ▲ 9. CONTACT MATERIAL: SILVER
- ▲ 10. PACKAGE: TAPE AND REEL, 1,200 PIECES PER REEL
11. ▲ DENOTES CRITICAL PARAMETER
12. OPERATING TEMP: -40°C TO 85°C

| | | | | |
|-----|--------|---------------------------|----------|-----|
| E | 24699 | CHANGE OPERATING TEMP | 2/3/21 | JM |
| D | 22597 | ACTUATOR COLOR TO BLACK | 11/17/16 | MW |
| C | 19514 | ADDED LEADER / FIXED NOTE | 12/09/10 | BGL |
| REV | PCR NO | DESCRIPTION | DATE | BY |



| | | | | |
|---------------------|-----------|-----|---------|-----|
| TITLE TL3301NF160QG | | | | |
| SCALE | DATE | DR | DWG | REV |
| 4:1 | 12/9/2010 | BGL | P010515 | E |

THE INFORMATION CONTAINED IN THIS DOCUMENT IS PROPRIETARY TO E-SWITCH AND IS NOT TO BE COPIED OR TRANSFERRED