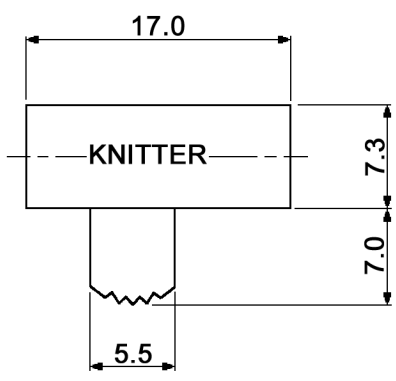
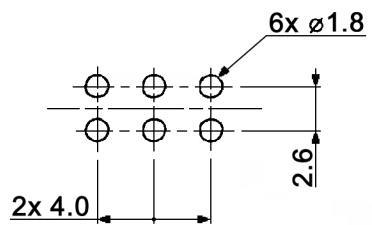
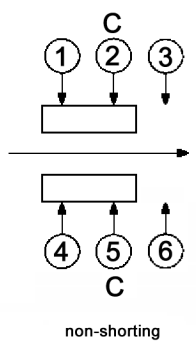


HOLE LAYOUT $\oplus 0.05$



CIRCUIT DIAGRAM
C: COMMON PIN
BOTTOM VIEW



Specifications:

- Contact rating: 0.3A, 30V DC
- Contact resistance: 30mOhm max.
- Insulation resistance: 100MOhm min. at 500V DC for 1 minute
- Dielectric strength: 500V AC (50/60Hz, 2mA) for 1 minute
- Operating temperature: -10°C to +60°C
- Mechanical life: 5 000 cycles
- Operating force: 250 +/-100 gf
- Soldering conditions: 260°C, 5 sec. max.
- Material: Terminal: brass strip, silver plated
Base: phenolic resin, natural
Contact plate: brass strip, silver plated
Spring: SWC, temper
Frame: SPCC, nickel plated
Slider: POM, black

Compliance: RohS III (2015/863/EU)

Tolerances: up to 10: ±0.2mm above 10-50: ±0.3mm	Date	Name
	03/21	dr
Modifications	Date	Name

MFP 201 N-RA

30 45 98

Page
1/1

knitter-switch