

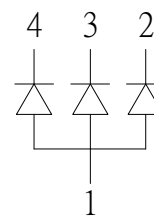
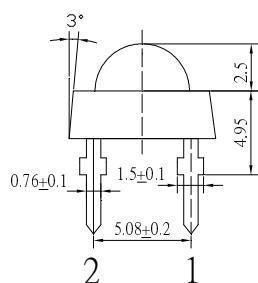
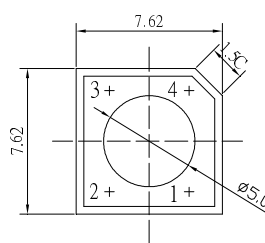
■Features

- Super Flux Output
- 5ϕ Standard Directivity
- Superior Weather-resistance
- UV Resistant Epoxy
- Water Clear Type

■Applications

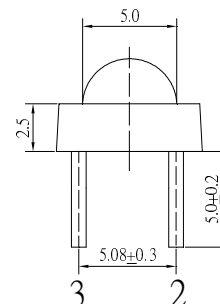
- Toys
- Games
- Audio
- Backing Lighting

■Outline Dimension



1. Common Anode
2. Blue
3. Green
4. Red

Unit:mm
Tolerance:±0.3mm



■Absolute Maximum Rating

(Ta=25°C)

| Item | Symbol | Value | | Unit |
|----------------------------|-----------|------------|------------|------|
| | | Red | Green/Blue | |
| DC Forward Current | I_F | 50 | 30 | mA |
| Pulse Forward Current* | I_{FP} | 120 | 100 | mA |
| Reverse Voltage | V_R | 5 | 5 | V |
| Power Dissipation | P_D | 130 | 108 | mW |
| Operating Temperature | T_{opr} | -30 ~ +85 | | °C |
| Storage Temperature | T_{stg} | -40 ~ +100 | | °C |
| Lead Soldering Temperature | T_{sol} | 260°C/5sec | | - |

*Pulse width Max.10ms Duty ratio max 1/10

■Electrical -Optical Characteristics

(Ta=25°C)

| Item | Symbol | Condition | Min. | Typ. | Max. | Unit |
|---------------------|--------------------|------------|------|------|------|------|
| DC Forward Voltage | $V_F(R)$ | $I_F=20mA$ | 1.8 | 2.1 | 2.6 | V |
| | $V_F(B/G)$ | $I_F=20mA$ | 2.9 | 3.1 | 3.6 | V |
| DC Reverse Current | I_R | $V_R=5V$ | - | - | 10 | μA |
| Domi. Wavelength* | $\lambda_D(Red)$ | $I_F=20mA$ | 620 | 625 | 630 | nm |
| | $\lambda_D(Green)$ | $I_F=20mA$ | 520 | 525 | 530 | nm |
| | $\lambda_D(Blue)$ | $I_F=20mA$ | 465 | 470 | 475 | nm |
| Luminous Intensity* | $I_v(Blue)$ | $I_F=20mA$ | 1560 | 2180 | - | mcd |
| | $I_v(Green)$ | $I_F=20mA$ | 5800 | 7000 | - | mcd |
| | $I_v(Red)$ | $I_F=20mA$ | 3000 | 4200 | - | mcd |
| 50% Power Angle | $2\theta_{1/2}$ | $I_F=20mA$ | - | 120 | - | deg |

*1 Tolerance of dominant wavelength is ±1nm

*2 Tolerance of luminous intensity is ±15%

■Directivity

