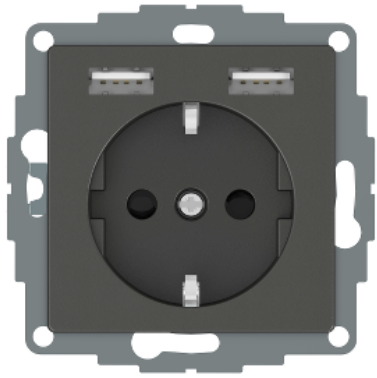


Product data sheet

Specifications



Merten - USB charger + schuko socket-outlet - 2.4A 16A - anthracite

MTN2366-0414

Main

Range	Merten
Product or component type	USB charger + socket-outlet

Complementary

Device presentation	Mechanism with fixing frame and central plate
Device mounting	Flush
Socket number	1
Outlet poles configuration	2P + E
Outlet standard description	Side earth
Outlet standard	Schuko
Cover type	With shutter
Rated current	16 A
Integrated connection type	1 socket-outlet 250 V AC, maximum load current: 16 A 2 USB port 5 V DC, maximum load current: 2.4 A
Input power	12 W
Mounting support	CEE60 installation box (1 module)
Range compatibility	Merten System M standard flush mounting box
Ground lug position	Straight 0° position
Number of modules	1 module
Fixing mode	By screws and claws
Colour tint	Anthracite (RAL 7024)
Surface finish	Matt
Surface treatment	Painted mechanism cover
Type of packing	Box
Quantity per set	1
Ambient air temperature for storage	-20...60 °C
Protection type	1 external fuse Against short-circuits Battery charge protection Automatic overload protection Thermal protection Automatic restart after ground fault or main power loss

Ambient air temperature for operation	-5...35 °C
Service life in cycles	30000 cycles
Connections - terminals	Screwless terminals
Number of terminals	3
Number of cables	2
Clamping connection capacity	1.5...2.5 mm ² for rigid cable(s) 1.5...2.5 mm ² for stranded cable(s)
Material	PC (polycarbonate): centre plate PC (polycarbonate): casing
Wire stripping length	11 mm
Height	71 mm
Width	71 mm
Depth	44 mm
Embedding depth	32 mm
Net weight	0.092 kg
Standards	NEN-EN 50198-2 EN/IEC 60950 DIN VDE 0620-1 IEC 60884-1
Product certifications	KEMA-KEUR FIMKO VDE SEMKO CB NEMKO
IK degree of protection	IK04
IP degree of protection	IP20

Environment

Environmental characteristic	Normal environment Indoor use
-------------------------------------	----------------------------------

Packing Units

Unit Type of Package 1	PCE
Number of Units in Package 1	1
Package 1 Weight	110.0 g
Package 1 Height	6 cm
Package 1 width	7.5 cm
Package 1 Length	7.5 cm
Unit Type of Package 2	CAR
Number of Units in Package 2	80
Package 2 Weight	9.28 kg
Package 2 Height	32.5 cm
Package 2 width	30 cm
Package 2 Length	40 cm

Offer Sustainability

EU RoHS Directive	Under investigation
Toxic heavy metal free	Yes

Mercury free	Yes
RoHS exemption information	Yes
China RoHS Regulation	China RoHS declaration Pro-active China RoHS declaration (out of China RoHS legal scope)
