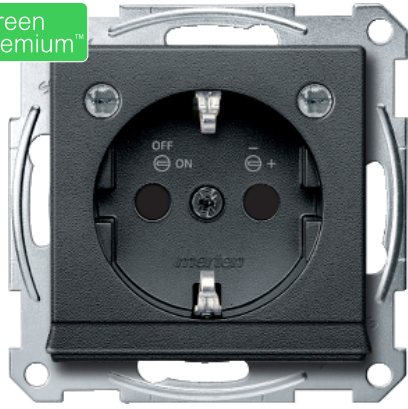


Product data sheet

Specifications



SCHUKO sock.-out. w. light outl.& LED light. mod. shut. screwl. term.anthr.Sys.M

MTN2304-0414

Main

Aesthetic name	M-Plan M-Star M-Elegance M-Smart System M M-Plan glass M-Arc
-----------------------	--

Product or component type	Socket-outlet
----------------------------------	---------------

Device presentation	Mechanism with central plate
----------------------------	------------------------------

Outlet standard	German
------------------------	--------

Socket additional information	With label surface Shuttered
--------------------------------------	---------------------------------

Complementary

Outlet poles configuration	2P + E
-----------------------------------	--------

Local signalling	With lighting
-------------------------	---------------

Wiring device mounting	Flush
-------------------------------	-------

Fixing mode	By screws and claws
--------------------	---------------------

Rated current	16 A
----------------------	------

[Ue] rated operational voltage	250 V
---------------------------------------	-------

Colour tint	Anthracite (RAL 7024)
--------------------	-----------------------

Connections - terminals	Screwless terminals
--------------------------------	---------------------

Material	Polycarbonate matt
-----------------	--------------------

Environment

IP degree of protection	IP20
--------------------------------	------

Packing Units

Unit Type of Package 1	PCE
-------------------------------	-----

Number of Units in Package 1	1
-------------------------------------	---

Package 1 Weight	99.0 g
-------------------------	--------

Package 1 Height	5.3 cm
-------------------------	--------

Package 1 width	7.6 cm
------------------------	--------

Package 1 Length	7.6 cm
Unit Type of Package 2	CAR
Number of Units in Package 2	50
Package 2 Weight	5.36 kg
Package 2 Height	18.5 cm
Package 2 width	30 cm
Package 2 Length	40 cm

Offer Sustainability

Sustainable offer status	Green Premium product
REACH Regulation	REACH Declaration
EU RoHS Directive	Compliant EU RoHS Declaration
Mercury free	Yes
RoHS exemption information	Yes
China RoHS Regulation	China RoHS declaration Product out of China RoHS scope. Substance declaration for your information
Environmental Disclosure	Product Environmental Profile
WEEE	The product must be disposed on European Union markets following specific waste collection and never end up in rubbish bins

Contractual warranty

Warranty	18 months
----------	-----------