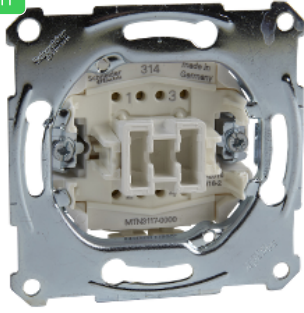


Product data sheet

Specifications



Intermediate switch insert 1 pole, flush-mounted, 10 AX, AC 250 V, screwless terminal.

MTN3117-0000

Main

Range of product	Merten inserts
Product or component type	Switch
Device presentation	Mechanism

Complementary

Switch function	Intermediate
Actuator	Rocker
Device mounting	Flush
Fixing mode	By screws and claws
[Ue] rated operational voltage	250 V
Rated current	10 AX
Maximum switching current	10 A
Number of rocker	1
Connections - terminals	Screwless terminals
Material	Metal Plastic

Environment

IP degree of protection	IP20
-------------------------	------

Packing Units

Unit Type of Package 1	PCE
Number of Units in Package 1	1
Package 1 Weight	650.0 g
Package 1 Height	4.5 cm
Package 1 width	7.2 cm
Package 1 Length	7.2 cm
Unit Type of Package 2	BB1
Number of Units in Package 2	10
Package 2 Weight	762 g

Package 2 Height	9.1 cm
Package 2 width	18.1 cm
Package 2 Length	27.1 cm
Unit Type of Package 3	CAR
Number of Units in Package 3	60
Package 3 Weight	5.04 kg
Package 3 Height	32.5 cm
Package 3 width	30 cm
Package 3 Length	40 cm

Offer Sustainability

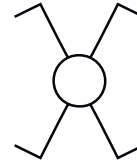
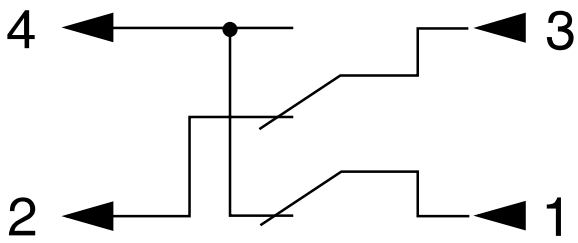
Sustainable offer status	Green Premium product
REACH Regulation	REACH Declaration
REACH free of SVHC	Yes
EU RoHS Directive	Compliant EU RoHS Declaration
Toxic heavy metal free	Yes
Mercury free	Yes
RoHS exemption information	Yes
China RoHS Regulation	China RoHS declaration Pro-active China RoHS declaration (out of China RoHS legal scope)
Environmental Disclosure	Product Environmental Profile
WEEE	The product must be disposed on European Union markets following specific waste collection and never end up in rubbish bins

Contractual warranty

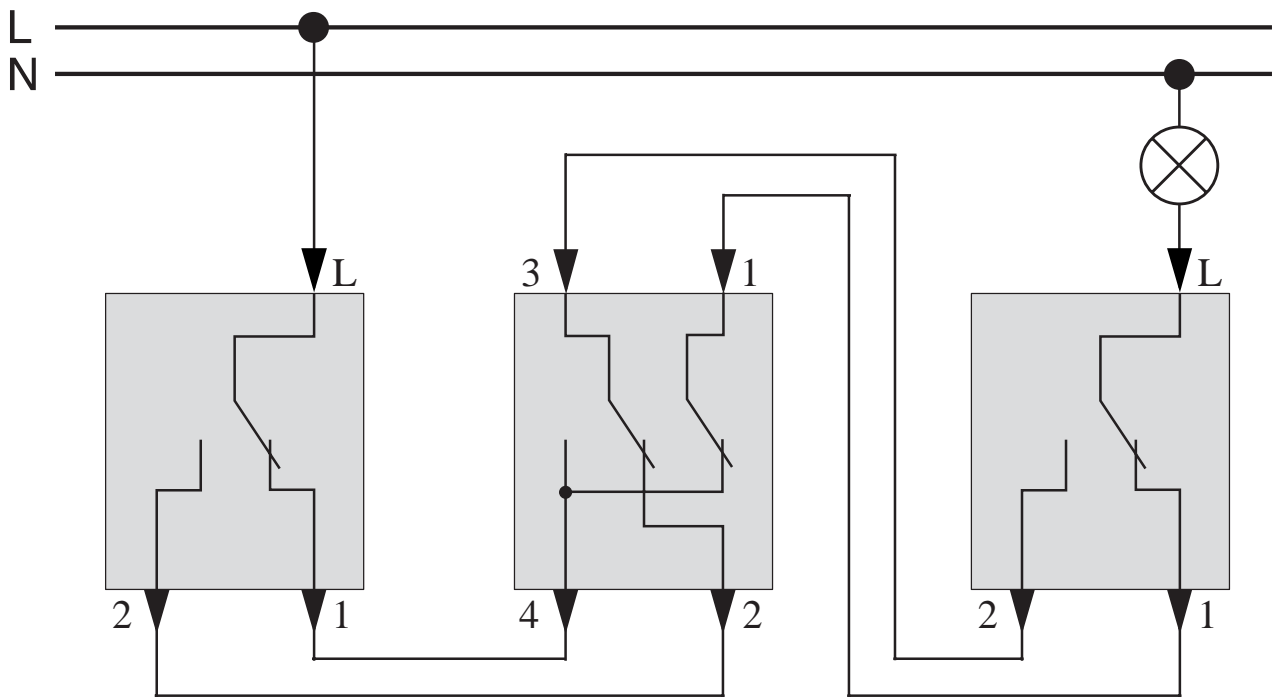
Warranty	18 months
----------	-----------

Wiring Diagram

Symbol



Intermediate switch circuit



One-way/
 Two-way switch
 Mxx3x16-0000

Intermediate switch
 Mxx3x17-0000

One-way/
 Two-way switch
 Mxx3x16-0000