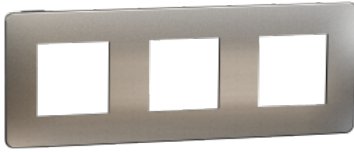


Product data sheet

Specifications



Cover frame, New Unica, 3 gang, 3 x 2 modules, white aluminium or black

NU280656M

Main

Range	New Unica
Device application	Mounting
Product or component type	Cover frame
Aesthetic name	Unica Studio Metal
Number of gangs	3 gangs
Installation direction	Horizontal/vertical
Type of frame	Triple
Number of modules	3 x 2 modules
Fixing mode	Screws
Colour tint	White aluminium
Side color	Black (RAL 7021)

Complementary

Material	Polycarbonate: intermediate plate
Surface finish	Brushed finish
Quantity per set	Set of 3
Standards	IEC 60669-1 IEC 60884-1
Width	227 mm
Height	85 mm
Depth	10 mm
Net weight	0.047 kg
Resistance to chemical agents	Resistant to alcohol (70 %) Resistant to alcohol (96 %) Resistant to A-Lactic Acid Resistant to diluted quaternary ammonium Resistant to diluted bleach Resistant to diluted ammonia Resistant to soapy water Resistant to crystal cleaner Resistant to hydrogen peroxide 10 volumes Resistant to hexane

Environment

IK degree of protection	IK04
-------------------------	------

IP degree of protection	IP21D
Packing Units	
Unit Type of Package 1	PCE
Number of Units in Package 1	1
Package 1 Weight	47.0 g
Package 1 Height	1 cm
Package 1 width	8.5 cm
Package 1 Length	22.7 cm
Unit Type of Package 2	S02
Number of Units in Package 2	18
Package 2 Weight	1.533 kg
Package 2 Height	15 cm
Package 2 width	30 cm
Package 2 Length	40 cm
Unit Type of Package 3	P06
Number of Units in Package 3	288
Package 3 Weight	33.028 kg
Package 3 Height	77 cm
Package 3 width	60 cm
Package 3 Length	80 cm

Offer Sustainability

Sustainable offer status	Green Premium product
REACH Regulation	REACH Declaration
REACH free of SVHC	Yes
EU RoHS Directive	Pro-active compliance (Product out of EU RoHS legal scope) EU RoHS Declaration
Toxic heavy metal free	Yes
Mercury free	Yes
RoHS exemption information	Yes
China RoHS Regulation	China RoHS declaration Pro-active China RoHS declaration (out of China RoHS legal scope)
Environmental Disclosure	Product Environmental Profile