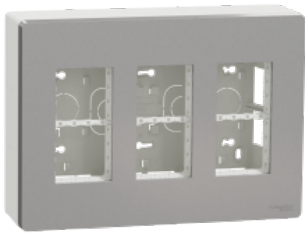


Product data sheet

Specifications



New Unica - workstation - surface - 3 x 4 modules - aluminium

NU123430

Main

Range	New Unica
Product or component type	Workstation
Number of modules	3 x 4 modules
Fixing mode	Screws
Colour tint	Aluminium

Complementary

Provided equipment	Fixing frame Cover frame
Device mounting	Surface
Cable entry	5 removable plates 2 bottom cable entries 30 mm for diameter 2 bottom cable entries 20 mm for diameter 2 bottom cable entries 25 mm for diameter
Material	ABS (acrylonitrile butadiene-styrene): box ABS (acrylonitrile butadiene-styrene): separator ABS (acrylonitrile butadiene-styrene): cover frame
Depth	60 mm
Width	230 mm
Height	165 mm
Net weight	0.508 kg
Resistance to chemical agents	Resistant to alcohol (70 %) Resistant to alcohol (96 %) Resistant to A-Lactic Acid Resistant to diluted quaternary ammonium Resistant to diluted bleach Resistant to diluted ammonia Resistant to soapy water Resistant to crystal cleaner Resistant to hydrogen peroxide 10 volumes Resistant to hexane

Environment

IK degree of protection	IK04
-------------------------	------

Packing Units

Unit Type of Package 1	PCE
Number of Units in Package 1	1

Package 1 Weight	609.0 g
Package 1 Height	8.2 cm
Package 1 width	17.8 cm
Package 1 Length	24.8 cm
Unit Type of Package 2	S04
Number of Units in Package 2	14
Package 2 Weight	9.292 kg
Package 2 Height	30 cm
Package 2 width	40 cm
Package 2 Length	60 cm
Unit Type of Package 3	P06
Number of Units in Package 3	56
Package 3 Weight	45.668 kg
Package 3 Height	80 cm
Package 3 width	80 cm
Package 3 Length	60 cm

Offer Sustainability

EU RoHS Directive	Not applicable, out of EU RoHS legal scope
Environmental Disclosure	Product Environmental Profile