

FEATURES & BENEFITS

- connector Cu, as per DIN, with galvanic tin plating, to make "butt splice" cable connections
- description of cable cross-section, crimping die number on crimped part surface
- central stamping guarantees correct length of conductor insertion, not mechanically loaded
- for voltage below 1 kV acc. to EN IEC 61238-1-1:2019
for the voltage range 1-36 kV acc. to EN IEC 61238-1-3:2019

MECHANICAL DATA

Material	Cu
Surface	tin-plated

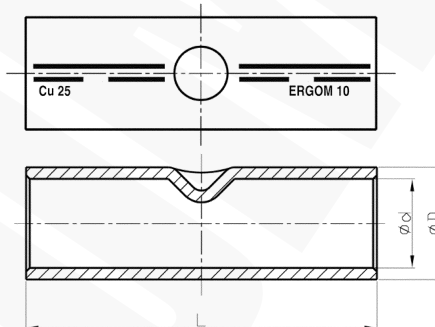
CERTIFICATES & STANDARDS

Standards	EN IEC 61238-1-1:2019 EN IEC 61238-1-3:2019 - mechanical strength Class 1 - Short-circuit resistance Class A for range of rated cross-section 10 - 240 mm ²
UL certificate	E475284
Design	DIN 46267 part 1

NOTE!

Sector-shaped conductors (sm) must be rounded with special dies.

UL certificate - visit www.ergom.com



Type	Index Ergom	Cross-section, mm ² [mm ²]	d	D	L	UL	Socket code no.	Lz/s	Lz/w	Quantity in package [pcs]	Weight [kg]
KLD 6 (100 PCS)	E11KM-02060100080	6	3,8	5,5	30	-	5	1 - 1	2 - 2	100	0,21
KLD 10 (100 PCS)	E11KM-02060100100	10	4,5	6,0	30	√	6	1 - 1	2 - 2	100	0,38
KLD 10 (10 PCS)	E11KM-02060100102									10	0,04
KLD 16 (100 PCS)	E11KM-02060100200	16	5,5	8,5	50	√	8	1 - 1	2 - 2	100	1,49
KLD 16 (10 PCS)	E11KM-02060100202									10	0,15
KLD 25 (100 PCS)	E11KM-02060100300	25	7,0	10,0	50	√	10	1 - 1	2 - 2	100	1,8
KLD 25 (10 PCS)	E11KM-02060100302									10	0,18
KLD 35 (100 PCS)	E11KM-02060100400	35	8,2	12,5	50	√	12	1 - 1	2 - 2	100	3,15
KLD 35 (10 PCS)	E11KM-02060100402									10	0,32
KLD 50 (100 PCS)	E11KM-02060100500	50	10,0	14,5	56	√	14	1 - 1	3 - 3	100	4,4
KLD 50 (10 PCS)	E11KM-02060100502									10	0,44
KLD 70 (100 PCS)	E11KM-02060100600	70	11,5	16,5	56	√	16	1 - 1	3 - 3	100	5,5
KLD 70 (10 PCS)	E11KM-02060100602									10	0,55
KLD 95 (50 PCS)	E11KM-02060100700	95	13,5	19,0	70	√	18	2 - 2	4 - 4	50	4,4
KLD 95 (10 PCS)	E11KM-02060100702									10	0,88
KLD 120 (50 PCS)	E11KM-02060100800	120	15,5	21,0	70	√	20	2 - 2	4 - 4	50	4,9
KLD 120 (10 PCS)	E11KM-02060100802									10	0,98
KLD 150 (50 PCS)	E11KM-02060100900	150	17,0	23,5	80	√	22	2 - 2	4 - 4	50	7,4
KLD 150 (10 PCS)	E11KM-02060100902									10	1,48
KLD 185 (50 PCS)	E11KM-02060101000	185	19,0	25,5	85	√	25	2 - 2	5 - 5	50	8,55
KLD 185 (10 PCS)	E11KM-02060101002									10	1,71
KLD 240 (50 PCS)	E11KM-02060101100	240	21,5	29,0	90	√	28	2 - 2	5 - 5	50	11,95
KLD 240 (10 PCS)	E11KM-02060101102									10	2,39
KLD 300 (10 PCS)	E11KM-02060101202	300	24,5	32,0	100	-	32	2 - 2	-	10	3,02
KLD 400	E11KM-02060101302	400	27,5	38,5	150	-	38	3 - 3	-	1	0,77

Type	Index Ergom	Cross-section, mm ²	d	D	L	UL	Socket code no.	Lz/s	Lz/w	Quantity in package [pcs]	Weight [kg]
KLD 500	E11KM-02060101402	500	31,0	42,0	160	-	42	3 - 3	-	1	0,91
KLD 625 (10 PCS)	E11KM-02060101500	625	34,5	44,0	160	-	44	3 - 3	-	10	8,5
KLD 625	E11KM-02060101502									1	0,85

Lz/s - Number of crimping - wide, Lz/w - Number of crimping - narrow