

# Aluminium terminals, longitudinally sealed, KRAC type

## FEATURES & BENEFITS

- ring terminal Al, tight, as per DIN, with galvanic tin plating
- description of cable cross-section, terminal size and crimping die number on crimped part surface
- for voltage below 1 kV acc. to EN IEC 61238-1-1:2019  
for the voltage range 1-36 kV acc. to EN IEC 61238-1-3:2019

## MECHANICAL DATA

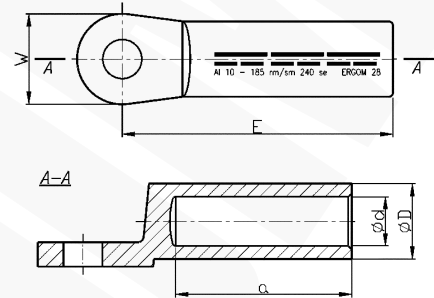
Material	Al
Surface	tin-plated

## CERTIFICATES & STANDARDS

Standards	EN IEC 61238-1-1:2019 EN IEC 61238-1-3:2019 - mechanical strength Class 1 - Short-circuit resistance Class A for range of rated cross-section 16 - 300 mm <sup>2</sup>
Design	DIN 46329

## NOTE!

- terminals are filled with special contact grease, packed in a separate foil bag;
- sector-shaped conductors must be rounded with special dies.



Type	Index Ergom	Cross-section, re/se [mm <sup>2</sup> ]	Cross-section, rm/sm [mm <sup>2</sup> ]	d	D	a	min	E	W	Screw hole	DIN	Socket code	Lz/s	Lz/w	Quantity in package [pcs]	Weight [kg]
KRAC 16/8 (100 PCS)	E12KA-01010300100	25	16	5,4	12,0	30	50	25		M8	-	12	2	4	100	1,66
KRAC 16/8 (10 PCS)	E12KA-01010300102									-	10				0,17	
KRAC 16/10 (100 PCS)	E12KA-01010300200									M10	-				100	1,62
KRAC 16/10 (10 PCS)	E12KA-01010300202									-	10				0,17	
KRAC 16/12 (100 PCS)	E12KA-01010300300									M12	-				100	1,54
KRAC 16/12 (10 PCS)	E12KA-01010300302									-	10				0,16	
KRAC 25/8 (100 PCS)	E12KA-01010300400	35	25	6,8	12,0	30	50	25		M8	-	12	2	4	100	1,54
KRAC 25/8 (10 PCS)	E12KA-01010300402									-	10				0,16	
KRAC 25/10 (100 PCS)	E12KA-01010300500									M10	√				100	1,53
KRAC 25/10 (10 PCS)	E12KA-01010300502									-	10				0,16	
KRAC 25/12 (100 PCS)	E12KA-01010300600									M12	-				100	1,45
KRAC 25/12 (10 PCS)	E12KA-01010300602									-	10				0,15	
KRAC 35/8 (100 PCS)	E12KA-01010300700	50	35	8,0	14,0	42	62	25		M8	-	14	3	5	100	2,3
KRAC 35/8 (10 PCS)	E12KA-01010300702									-	10				0,23	
KRAC 35/10 (100 PCS)	E12KA-01010300800									M10	√				100	2,3
KRAC 35/10 (10 PCS)	E12KA-01010300802									-	10				0,23	
KRAC 35/12 (100 PCS)	E12KA-01010300900									M12	-				100	2,1
KRAC 35/12 (10 PCS)	E12KA-01010300902									-	10				0,21	
KRAC 35/14 (100 PCS)	E12KA-01010301000	70	50	9,8	16,0	42	62	25		M14	-	16	3	5	100	1,82
KRAC 35/14 (10 PCS)	E12KA-01010301002									-	10				0,19	
KRAC 50/8 (100 PCS)	E12KA-01010301100									M8	-				100	2,8
KRAC 50/8 (10 PCS)	E12KA-01010301102									-	10				0,28	
KRAC 50/10 (100 PCS)	E12KA-01010301200									M10	√				100	2,8
KRAC 50/10 (10 PCS)	E12KA-01010301202									-	10				0,28	
KRAC 50/12 (100 PCS)	E12KA-01010301300	M12	-	100	2,8											
KRAC 50/12 (10 PCS)	E12KA-01010301302					10	0,28									
KRAC 50/14 (100 PCS)	E12KA-01010301400					M14	-	100	2,4							
KRAC 50/14 (10 PCS)	E12KA-01010301402									10	0,24					

Type	Index Ergom	Cross-section, re/se [mm <sup>2</sup> ]	Cross-section, rm/sm [mm <sup>2</sup> ]	d	D	a min	E	W	Screw hole	DIN	Socket code	Lz/s	Lz/w	Quantity in package [pcs]	Weight [kg]											
KRAC 70/8 (100 PCS)	E12KA-01010301500	95	70	11,2	18,5	52	72	25	M8	√	18	3	6	100	3,25											
KRAC 70/8 (10 PCS)	E12KA-01010301502								10					0,33												
KRAC 70/10 (100 PCS)	E12KA-01010301600								M10					100	3,95											
KRAC 70/10 (10 PCS)	E12KA-01010301602								M12					10	0,4											
KRAC 70/12 (100 PCS)	E12KA-01010301700								M12					100	3,6											
KRAC 70/12 (10 PCS)	E12KA-01010301702								M14					10	0,36											
KRAC 70/14 (100 PCS)	E12KA-01010301800								M14					100	3,73											
KRAC 70/14 (10 PCS)	E12KA-01010301802								M16					10	0,38											
KRAC 70/16 (100 PCS)	E12KA-01010301900								M16					100	3,45											
KRAC 70/16 (10 PCS)	E12KA-01010301902								M10					10	0,35											
KRAC 95/10 (50 PCS)	E12KA-01010302000								120					95	13,2	22,0	56	75	25	M10	√	22	3	6	50	2,87
KRAC 95/10 (10 PCS)	E12KA-01010302002																			M12					10	0,58
KRAC 95/12 (50 PCS)	E12KA-01010302100																			M12					50	2,74
KRAC 95/12 (10 PCS)	E12KA-01010302102																			M14					10	0,55
KRAC 95/14 (50 PCS)	E12KA-01010302200																			M14					50	2,65
KRAC 95/14 (10 PCS)	E12KA-01010302202																			M16					10	0,53
KRAC 95/16 (50 PCS)	E12KA-01010302300	M16	50	2,71																						
KRAC 95/16 (10 PCS)	E12KA-01010302302	M10	10	0,55																						
KRAC 120/10 (50 PCS)	E12KA-01010302400	150	120	14,7	23,0	56	80	30	M10	√	22	3	6	50	3,24											
KRAC 120/10 (10 PCS)	E12KA-01010302402								M12					10	0,65											
KRAC 120/12 (50 PCS)	E12KA-01010302500								M12					50	3,2											
KRAC 120/12 (10 PCS)	E12KA-01010302502								M14					10	0,64											
KRAC 120/14 (50 PCS)	E12KA-01010302600								M14					50	3,2											
KRAC 120/14 (10 PCS)	E12KA-01010302602								M16					10	0,64											
KRAC 120/16 (50 PCS)	E12KA-01010302700								M16					50	3,3											
KRAC 120/16 (10 PCS)	E12KA-01010302702								M10					10	0,66											
KRAC 150/10 (50 PCS)	E12KA-01010302800	185	150	16,3	25,0	60	90	30	M10	√	25	3	6	50	4,4											
KRAC 150/10 (10 PCS)	E12KA-01010302802								M12					10	0,88											
KRAC 150/12 (50 PCS)	E12KA-01010302900								M12					50	4,4											
KRAC 150/12 (10 PCS)	E12KA-01010302902								M14					10	0,88											
KRAC 150/14 (50 PCS)	E12KA-01010303000								M14					50	4,2											
KRAC 150/14 (10 PCS)	E12KA-01010303002								M16					10	0,84											
KRAC 150/16 (50 PCS)	E12KA-01010303100								M16					50	4,3											
KRAC 150/16 (10 PCS)	E12KA-01010303102								M20					10	0,86											
KRAC 150/20 (50 PCS)	E12KA-01010303200								M20					50	4,1											
KRAC 150/20 (10 PCS)	E12KA-01010303202								M10					10	0,82											
KRAC 185/10 (50 PCS)	E12KA-01010303300	240	185	18,3	28,5	60	91	30	M10	√	28	3	6	50	5,25											
KRAC 185/10 (10 PCS)	E12KA-01010303302								M12					10	1,05											
KRAC 185/12 (50 PCS)	E12KA-01010303400								M12					50	5,5											
KRAC 185/12 (10 PCS)	E12KA-01010303402								M14					10	1,1											
KRAC 185/14 (50 PCS)	E12KA-01010303500								M14					50	5,75											
KRAC 185/14 (10 PCS)	E12KA-01010303502								M16					10	1,15											
KRAC 185/16 (50 PCS)	E12KA-01010303600								M16					50	5,4											
KRAC 185/16 (10 PCS)	E12KA-01010303602								M20					10	1,08											
KRAC 185/20 (50 PCS)	E12KA-01010303700								M20					50	5,4											
KRAC 185/20 (10 PCS)	E12KA-01010303702								M10					10	1,08											
KRAC 240/10 (50 PCS)	E12KA-01010303800	300	240	21,0	32,0	70	103	38	M10	√	32	3	8	50	8,2											
KRAC 240/10 (10 PCS)	E12KA-01010303802								M12					10	1,64											
KRAC 240/12 (50 PCS)	E12KA-01010303900								M12					50	8,4											
KRAC 240/12 (10 PCS)	E12KA-01010303902								M14					10	1,68											
KRAC 240/14 (50 PCS)	E12KA-01010304000								M14					50	7,95											
KRAC 240/14 (10 PCS)	E12KA-01010304002								M16					10	1,59											
KRAC 240/16 (50 PCS)	E12KA-01010304100								M16					50	8											
KRAC 240/16 (10 PCS)	E12KA-01010304102								M20					10	1,6											
KRAC 240/20 (50 PCS)	E12KA-01010304200								M20					50	7,75											
KRAC 240/20 (10 PCS)	E12KA-01010304202								M20					10	1,55											

Type	Index Ergom	Cross-section, re/se [mm <sup>2</sup> ]	Cross-section, rm/sm [mm <sup>2</sup> ]	d	D	a min	E	W	Screw hole	DIN	Socket code	Lz/s	Lz/w	Quantity in package [pcs]	Weight [kg]
<b>KRAC 300/12 (25 PCS)</b>	E12KA-01010304400	-	300	23,3	34,0	70	103	38	M12	√	34	3	-	25	3,61
<b>KRAC 300/12 (10 PCS)</b>	E12KA-01010304402								10	1,45					
<b>KRAC 300/14 (25 PCS)</b>	E12KA-01010304500								M14	-				25	4,1
<b>KRAC 300/14 (10 PCS)</b>	E12KA-01010304502								M14	-				10	1,64
<b>KRAC 300/16 (25 PCS)</b>	E12KA-01010304600								M16	√				25	4,3
<b>KRAC 300/16 (10 PCS)</b>	E12KA-01010304602								M16	√				10	1,72
<b>KRAC 300/20 (25 PCS)</b>	E12KA-01010304700								M20	√				25	4,2
<b>KRAC 300/20 (10 PCS)</b>	E12KA-01010304702								M20	√				10	1,68

Lz/s - Number of crimping - wide, Lz/w - Number of crimping - narrow