



Scan with your
mobile camera or visit:
www.mausstixxpro.com



MAUS

STIXX PRO

AUTOMATIC FIRE SUPPRESSION UNIT

www.maussafety.com



EN

CE 2829



KEY FEATURES



FLOODING

Once activated it will release 100% of it's content.



NON TOXIC

The potassium formula is 100% non toxic & environmentally friendly.



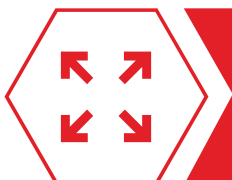
FAST

Activation at very low temperature - 180 °C.



MAINTENANCE

Maintenance free during its 5 year life span.



SIZE

With its small size you can place the unit anywhere.



SYSTEM

No complex system. No wiring. No batteries. No pressure.

LAYERS



TOP COVER

HEAT DETECTING CABLE

IGNITION PACK + AGENT

BASE WITH TAPE

2

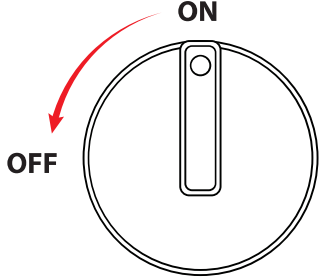


MAUS

www.maussafety.com

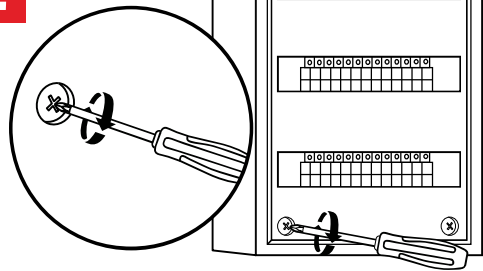
DISTRIBUTION BOARD INSTALLATION

1



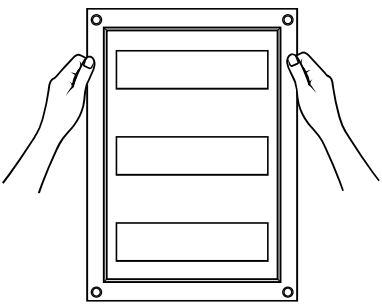
Turn the electricity off.

2



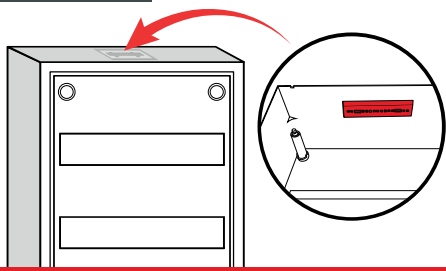
Unscrew the front panel.

3



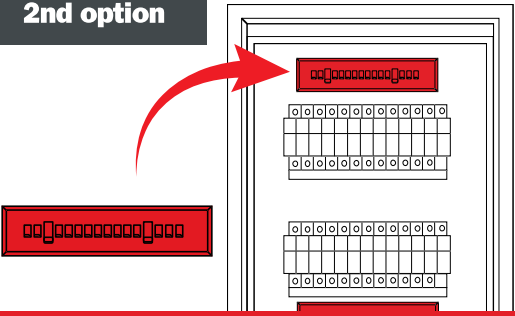
Remove the front panel.

1st option



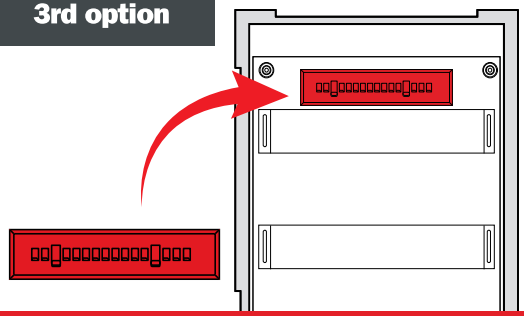
In the ceiling of the panel facing down.

2nd option



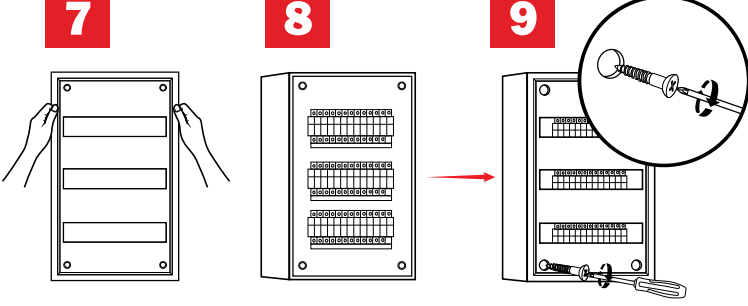
On the back wall

3rd option



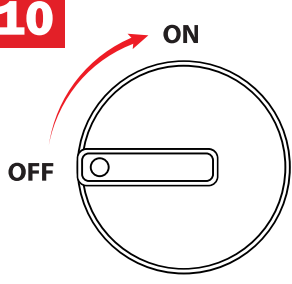
Inside of the front panel

7 **8** **9**



Put the front panel back and screw in place.

10



Turn the power on.



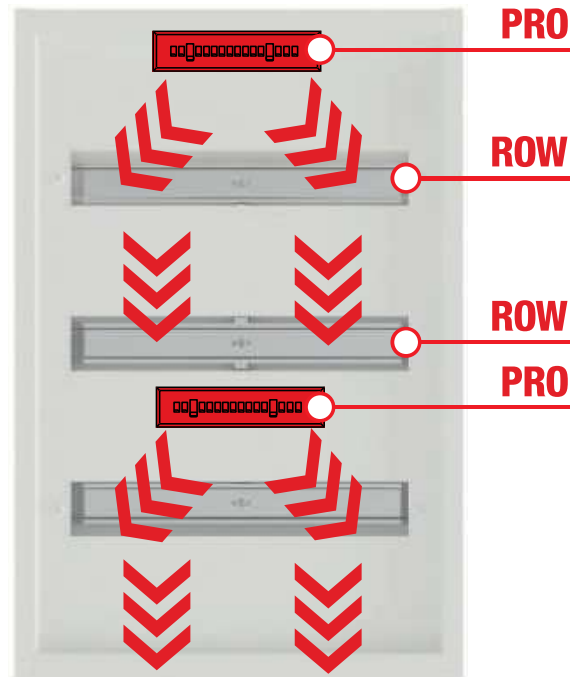
THE EASY RULE

PRO ► ROW ► ROW ► PRO

In larger distribution boards, if the fire starts at a lower point, there could be multiple cables and fuses that prevents the hot smoke and fire to reach the Stixx PRO in order for it to activate fast. To make sure that the Stixx PRO will activate fast we need to add another Stixx PRO according to the rule “pro - row - row - pro”. Of course if there are only two rows you don't need an extra Stixx PRO. See EXAMPLE 2 below (Examples).

The Easy Rule:

PRO ► ROW ► ROW ► PRO



EXAMPLES

Distribution Boards

EXAMPLE 1



EXAMPLE 2

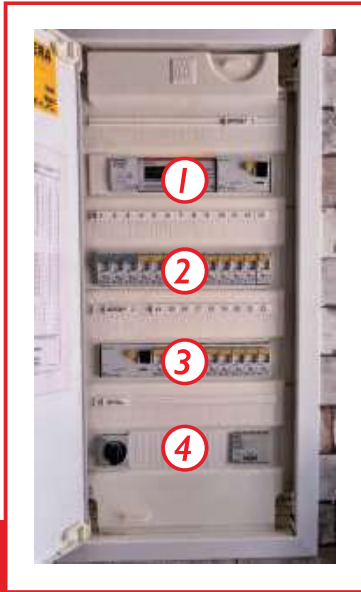


EXAMPLE 3



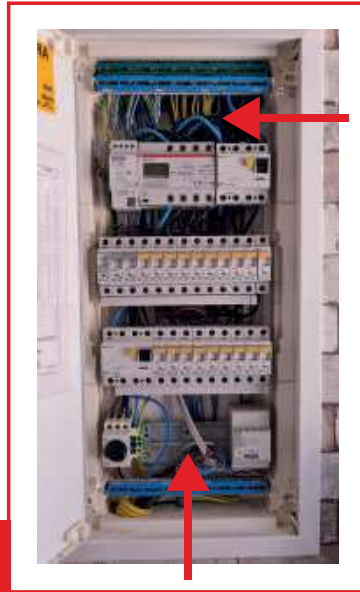
SUPER EASY!

EXAMPLE DISTRIBUTION BOARD



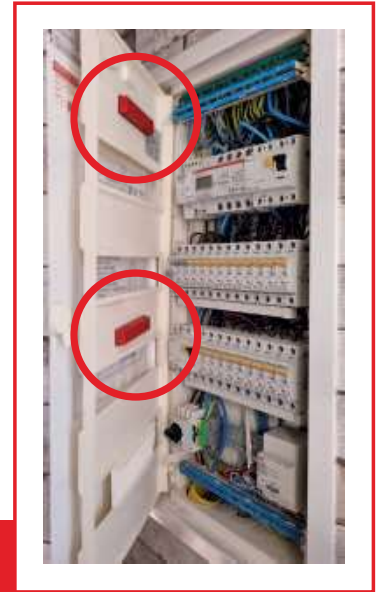
1

Normal distribution board with 4 rows.



2

With so many cables you can not place it on the back wall or in the ceiling.



3

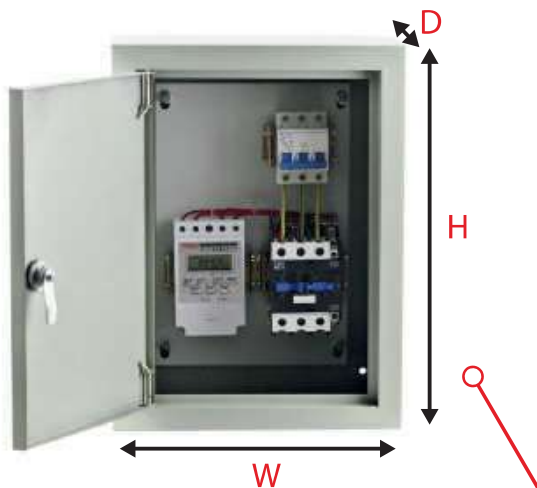
The best option is to place them on the inside of the panel door. *Pro, row, row, pro!*



VOLUME CABINETS CALCULATE THE VOLUME

The difference between distribution boards and volume cabinets.

HOW TO CALCULATE THE VOLUME:
HEIGHT (H) X WIDTH (W) X DEPTH (D)



A **VOLUME CABINET** is a cabinet that has free space inside. It does not have rows with fuses like a distribution board so we need to calculate the volume instead.

EXAMPLES LESS THAN 1M TALL

VOLUME: 0.1m³
STIXX PRO: 1

VOLUME: 0.2m³
STIXX PRO: 2

Place the units in the ceiling of the cabinet.

■ **IF THE HEIGHT IS MORE THAN 1M AND VOLUME LESS THAN 0.1 M³:**
Place 1x Stixx PRO in the ceiling, and 1x Stixx PRO in the middle.

■ **IF THE HEIGHT IS MORE THAN 1M AND VOLUME 0.1-0.2m³:**
Place 2x Stixx PRO in the ceiling, and 2x Stixx PRO in the middle.

IMPORTANT! If the space is ventilated you need to double (x2) the amount of Stixx PRO's.



MAUS

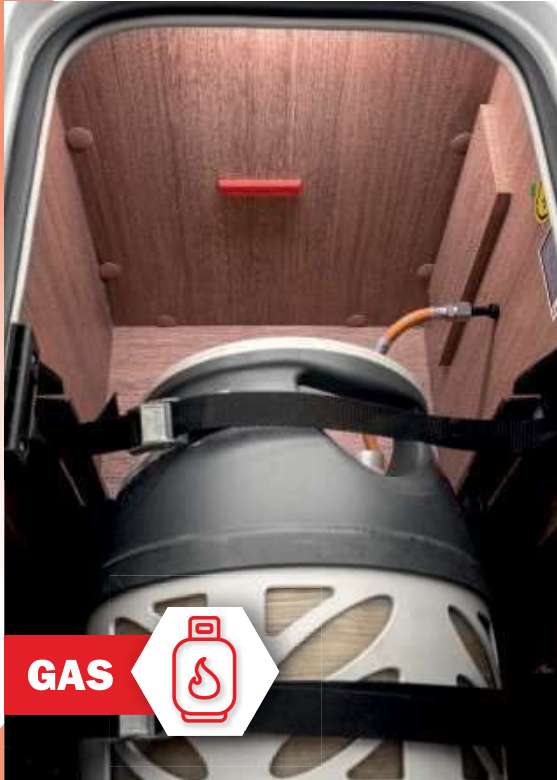
www.maussafety.com

5

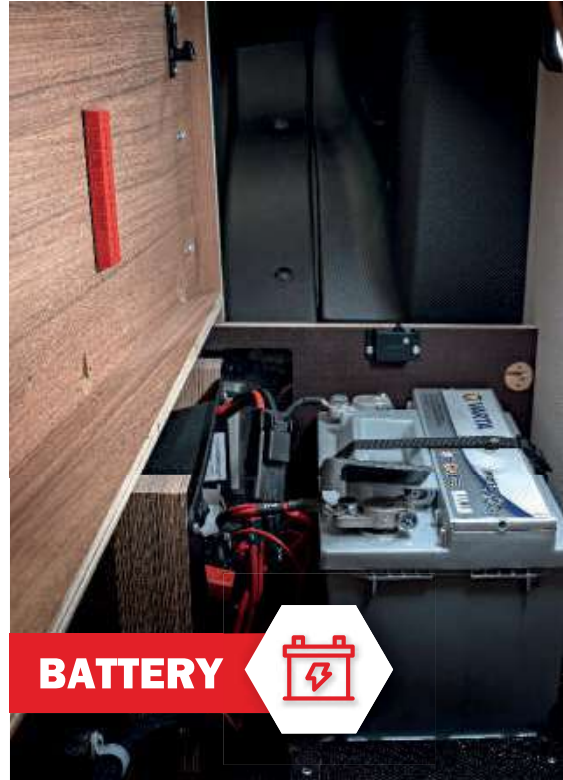


EXAMPLES

Caravan



GAS



BATTERY



ELECTRIC



VOLUME CABINET! If the space is 0 to 0.1m³ = 1 x Stixx PRO. 0.1 to 0.2m³ = 2 x Stixx PRO. 0.2 to 0.3m³ = 3 x Stixx PRO etc. **Place the Stixx PRO's close to each other.**





EXAMPLES

Motorboat



1. REMOVE THE TOP

Always remove the top and install the device when the motor is cool.



2. INSTALL THE DEVICE

Remove the adhesive cover and press for 10-20 seconds.



3. AUTOMATIC ACTIVATION

At 180°C the unit will activate underneath the top and suppress the fire.



4. NO DAMAGING RESIDUES

The potassium based aerosol will not leave any damaging residues.