



User Manual

Indoor HD IP Camera



Model: C1 Lite

Table of Contents

| | |
|---|----|
| Security Warning | 1 |
| 1 Overview | 1 |
| 1.1 Key Features..... | 1 |
| 1.2 Read Before Use | 2 |
| 1.3 Package Contents..... | 2 |
| 1.4 Physical Description..... | 2 |
| 1.5 Micro-SD Card | 4 |
| 2 Access the IP Camera | 5 |
| 2.1 Wireless Connection..... | 5 |
| 2.3 Access the Camera in WAN | 11 |
| 2.4 Using the VLC player | 14 |
| 2.5 IP camera connection to the server..... | 16 |
| 3 Surveillance Software GUI | 17 |
| 3.1 login Window..... | 17 |
| 3.2 Setup Wizard | 18 |
| 3.3 Surveillance Window..... | 18 |
| 4 Advanced Camera Settings | 22 |
| 4.1 Setup Wizard | 22 |
| 4.2 Status | 22 |
| 4.3 Basic Settings | 24 |
| 4.4 Network..... | 33 |
| 4.5 Video | 43 |
| 4.6 Detector..... | 46 |
| 4.7 Record..... | 49 |
| 4.8 Firewall..... | 53 |
| 4.9 System | 54 |
| 5 Playback..... | 58 |
| 6 Appendix | 60 |
| 6.1 Frequently Asked Questions..... | 60 |
| 6.2 Default Parameters..... | 67 |
| 6.3 Specifications..... | 68 |
| 6.4 CE & FCC | 69 |
| 6.5 Warranty..... | 70 |
| 6.6 Statement..... | 72 |
| 7 Obtaining Technical Support..... | 74 |

Security Warning

Foscam cameras and NVRs require good security practices to safeguard your privacy. You should regularly change your camera or NVR password which is 8-10 numbers, letters, symbols combination. You should update your camera or NVR regularly. Make sure your camera or NVR has the latest firmware installed for your specific model and better experience.

1 Overview

FOSCAM Indoor HD IP Camera is an integrated wireless IP Camera with a color CMOS sensor which enable to view in High Definition resolution. It combines a high quality digital video camera, with a powerful web server, to bring clear video to your desktop and mobile devices no matter where by your local network or over the Internet.

These cameras support P2P function. Thanks to the P2P easy access technology, you don't need to do complicated Port Forwarding and DDNS settings, you just need to scan the QR code on the bottom of the camera to connect it to smart phone, or input the UID on CMS software to realize remote access.

FOSCAM IP Camera provides users with more comprehensive controls over a monitored site. The camera supports H.264 video compression technology, dramatically reduces file size and saves network bandwidth.

The camera is based on the TCP/IP standard. A built-in WEB server inside which could support Internet Explorer simplifies the management and maintenance of your device is simplified by accessing the website of your camera through network.

The camera is designed for indoor surveillance with wide applications such as at home, in retail store and in office. Controlling the camera and managing images are simplified by using the provided web interface across the network in either wired or wireless way.

FOSCAM provides Smart Phone APP for Android and iPhone users, please search and install Foscam App named **Foscam** on App Store and Google Play for iOS and Android devices, then you can view your camera anywhere, anytime on your smart mobile devices.

1.1 Key Features

- Standard H.264 video compression algorithm to satisfy the transmission of high definition video in narrow bandwidth network
- P2P feature for easy access
- ◆ 1.0 Mega-Pixel
- ◆ Supports IE/Firefox/Google/Safari browser or any other standard browsers
- Support WEP, WPA-PSK and WPA2-PSK Encryption
- Wireless connection is compliant with IEEE 802.11b/g/n WI-FI, up to 150Mbps
- Support image snapshot

- Support dual-stream
- Support micro SD Card storage up to 32GB
- Embedded free FOSCAM DDNS(dynamic domain name service) Service
- Supporting the Third Party Domain Name Service
- Support two-way audio
- Support ONVIF protocols
- Multi-level users management with password protection
- Motion detection alert via email or upload image to FTP
- Provide free Android and iPhone APP for viewing live video provide free Central Management Software to manage and monitor multiple cameras
- Support record schedule

1.2 Read Before Use

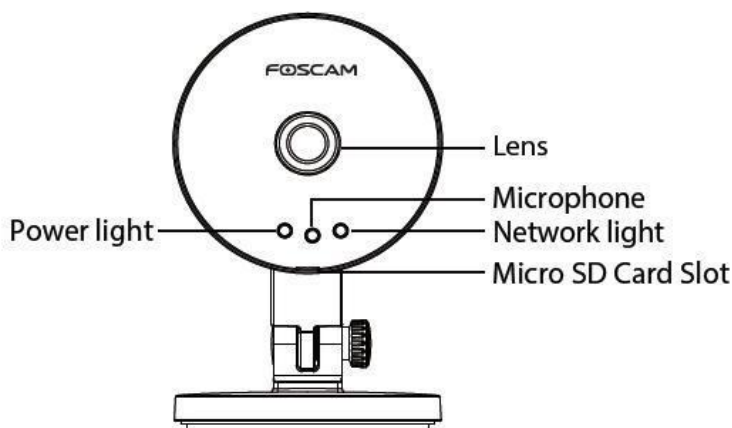
Please first verify that all contents received are complete according to the Package Contents listed below. Before the IP Camera is installed, please carefully read and follow the instructions in the Quick Installation Guide to avoid damage due to faulty assembly and installation. It also ensures the product is used properly as intended.

1.3 Package Contents

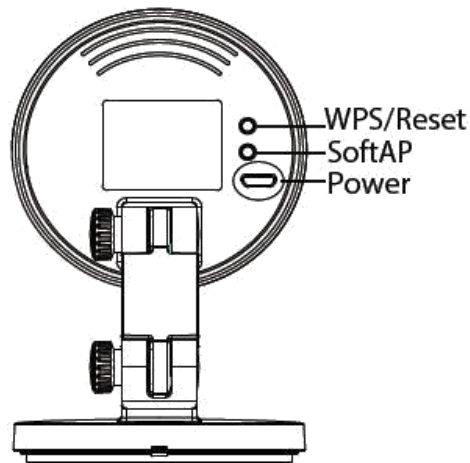
| | |
|--------------------------------|------------------|
| ● IP Camera × 1 | ● AC Adapter × 1 |
| ● Quick Installation Guide × 1 | ● Power Line × 1 |
| ● Warranty Card × 1 | |

1.4 Physical Description

Front panel



Rear panel (some models support SoftAP)



Front panel:

- LENS: Fixed focus lens.
- Microphone: Built-in microphone.
- Micro SD Card slot: Supports up to 32GB SD card for storing the video.
- Power Light: If the power supply works fine, the light will be on.

The flashing status of the Power light and Network light are shown in the following table.

| Light | Flashing Status | Description |
|---------------|-----------------------------|--------------------------------|
| Power light | off | The power don't work properly. |
| | on | The power supply works fine. |
| | Flashing every 0.4 seconds | Reset to take effect |
| Network light | off | No Wireless connection |
| | Slow Flash every 1.0 second | Wi-Fi connected |
| | Flashing every 0.4 seconds | WPS is connecting |
| | Flashing every 0.2 seconds | EZLink takes effect |
| | Flashing every 0.1 seconds | SoftAP is started |

Rear panel:

- SoftAP: Press the SoftAP button for more than 2 seconds. The Network light indicator begins to twinkle every 0.1 seconds. (some models support SoftAP)
- WPS/Reset
 - WPS: Push both WPS/Reset button on the camera and wireless router within 1 minute, the camera will connect to the wireless router automatically, in WPS process, the Network light will blink every 0.4 seconds;
 - Reset: Push and hold the WPS/Reset button for more than 10 seconds to set the camera to factory default, the Power light will blink every 0.4 seconds;
- Power: DC 5V/1A Power supply.

1.5 Micro-SD Card

This camera supports Micro-SD card.

When you plug in the SD card during the camera work process, please reboot the camera again, or else the SD Card may be cannot work well.

Go to the **Settings→Device Status→Device Status** page, you can see the SD card status.

2 Access the IP Camera

2.1 Wireless Connection

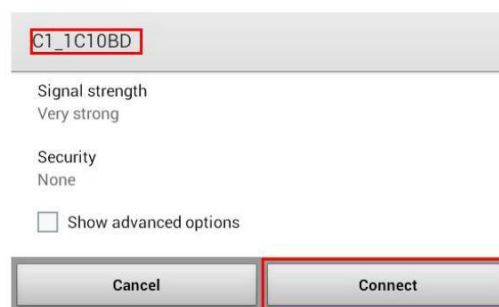
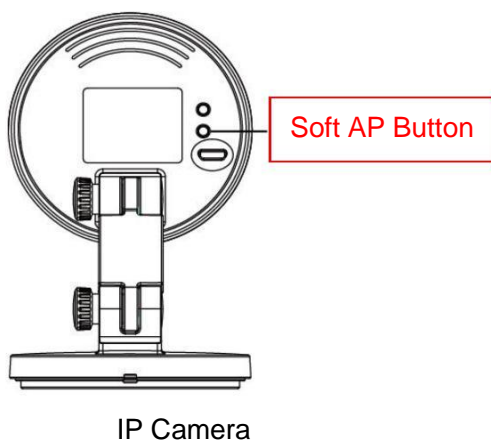
There are some ways of wireless connection: EZLink connection, soft AP connection and WPS connection.

- **EZLink connection:** Use the mobile phones or other mobile devices to download APP, then connect the camera and the wireless router by the APP. The procedure of the EZLink connection, please refer to the Quick Installation Guide.
- **Soft AP connection:** Use the mobile device which can search for the wireless network, Then use the web browser to visit <http://192.168.1.1:88> by the mobile device. Follow the Setup Wizard to finish the settings.
- **WPS connection:** WI-FI Protected Set-up, Press and hold the WPS button on your wireless router and your camera within 60 seconds. So that your camera and wireless router connect successfully.

2.2.1 Soft AP Connection

To ensure that the ethernet cable and the camera is disconnected before you begin.

1. Start camera: power on, the indicator light of camera will light on.
2. Press the Soft AP button for 3-5 seconds. The Network light begins to twinkle at very high frequency (every 0.1 seconds).
3. Use a terminal which could search the WLAN (desktop or laptop. This part takes laptop as an example.) to search for the AP named "C1_*****" for connection. (***** indicate the last six letters of camera's MAC ID.)



The WLAN page in the terminal device

4. After finishing Soft AP connection, use the web browser of the terminal to visit <http://192.168.1.1:88>.



5. Log in the camera (Default username is admin with no password). When log in for the first time, you need to change the username and password.

Input the **New username**, **New password** and **Confirm the password**.

Username: admin

New username:

New password:

Security Level:

Confirm the password:

Modify

6. After logging in for the first time, it will go to "Setup Wizard" automatically. Please set the basic parameters of the camera, such as camera name, camera time, wireless settings (The camera connect to your wireless router: Wireless Network List - enter the password of your wireless router), IP configuration.

Setup Wizard

Step 1 of 5 - Soft AP Password Settings

| | |
|----------------------|--------------------------|
| SSID | C1 Lite_000001 |
| Encryption | WPA/WPA2 |
| Password | <input type="password"/> |
| New password | <input type="password"/> |
| Security Level | <input type="text"/> |
| Confirm the password | <input type="password"/> |

Previous Next

Setup Wizard

Step 2 of 5 - Camera Name

| | |
|-------------|--|
| Camera Name | <div style="border: 1px solid #ccc; padding: 5px; margin-bottom: 5px;">C1 Lite</div> <p style="font-size: 0.9em; color: #666;">The maximum Device Name length is 20, support English, numbers, letters and symbols</p> |
|-------------|--|

Previous
Next

Setup Wizard

Step 3 of 5 - Camera Time

| | |
|-----------|---|
| Time Zone | <div style="border: 1px solid #ccc; padding: 5px;">(GMT) Greenwich mean time; London, Lisbon, ▼</div> |
|-----------|---|

Sync with NTP server ☒

| | |
|------------|--|
| NTP Server | <div style="border: 1px solid #ccc; padding: 5px;">time.nist.gov ▼</div> |
|------------|--|

PC Time

2014-11-20
||

00

:

58

:

17

Sync with PC

| | |
|-------------|---|
| Date Format | <div style="border: 1px solid #ccc; padding: 5px;">YYYY-MM-DD ▼</div> |
| Time Format | <div style="border: 1px solid #ccc; padding: 5px;">24-hour ▼</div> |

use DST ☐

Ahead Of Time

0
:
Minute

Previous
Next

Setup Wizard

Step 4 of 5 - Wireless Settings

Wireless Network List

Scan

| SSID(Network Name) | Encryption | Quality |
|--------------------|------------|------------------------|
| wutingjun | WPA/WPA2 | <div><div></div></div> |
| TP-LINK_3B9E4E | WPA/WPA2 | <div><div></div></div> |
| Sera | WPA/WPA2 | <div><div></div></div> |
| TP-LINK_YF | WPA/WPA2 | <div><div></div></div> |
| TP-LINK_CB209C | WPA/WPA2 | <div><div></div></div> |
| WX15 | WPA | <div><div></div></div> |
| TP-LINK_TEST | WPA/WPA2 | <div><div></div></div> |
| ZTE-932C04 | WPA | <div><div></div></div> |
| WEILI | WPA/WPA2 | <div><div></div></div> |
| doc | WPA/WPA2 | <div><div></div></div> |

Pages: 4
<< 1 2 3 >>
Go

SSID

Encryption

WPA/WPA2 ▾

Password

.....

The maximum password length is 63, including numbers, letters and symbols ~ ! @ # % ^ * () _ + { } : " ' < > ? ` - ; ' \ , . /

Previous
Next

Setup Wizard

Step 5 of 5 - IP Configuration

Obtain IP From DHCP ☒

| | |
|----------------------|--|
| IP Address | <input type="text" value="192.168.1.104"/> |
| Subnet Mask | <input type="text" value="255.255.255.0"/> |
| Gateway | <input type="text" value="192.168.1.1"/> |
| Primary DNS Server | <input type="text" value="211.162.78.1"/> |
| Secondary DNS Server | <input type="text" value="211.162.78.2"/> |

Previous
Finish

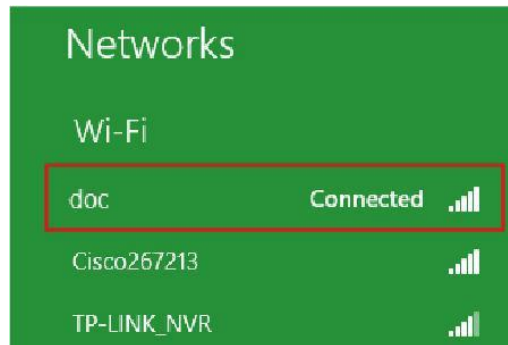
Notes:

- We recommend you to choose to manually set the IP when you know some knowledge of the network.
- It needs about 1 minute to connect the camera to your router.

7. After completing the setup wizard, you should press the Soft AP button for 3-5 seconds to cancel the Soft AP connection mode, this is located on the back of your camera. The Network light begins to slowly flash(once per second), it indicates that the wireless connection is successful.

8. Please make sure that the wireless device connect your laptop to the router which your camera has

connected to.



9. Download the “Equipment Search Tool” from office website <http://www.foscam.com>. Please access the website, select “Support > Download Center > Software Tools”, then you can find the “Equipment Search Tool”, the icon shows as below:



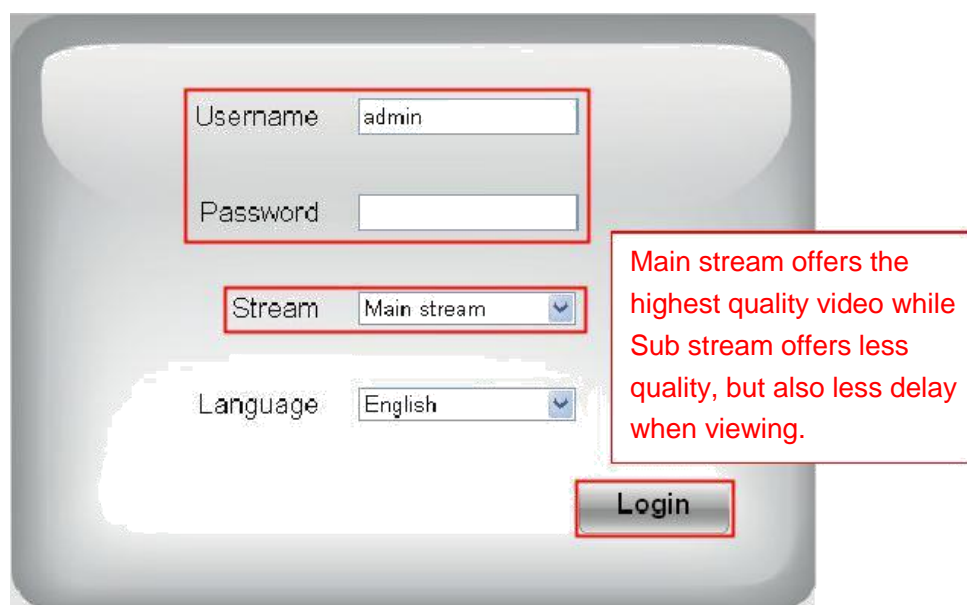
Download the “Equipment Search Tool” to your computer, double click the icon to run, and it should find the camera’s IP address automatically.

| Equipment Search Tool | | | |
|-----------------------|-------------------------|--------------|------|
| Camera Name | IP Address | Device ID | Type |
| Anonymous | Http://192.168.1.105:88 | 00626E55AB1E | IPC |

Notes:

If you have multiple cameras and you cannot determine which camera you are going to log in. Please match the "Device MAC address" on the search tool with the MAC address on the label pasted of each camera.

10. Double-click the camera list here, and your default browser will open up to the login page. Input the username and password you has changed. Then, you will see the live video on the interface.



Now, you could use your camera in LAN.

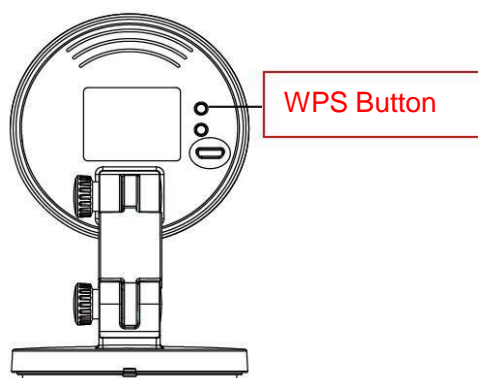
Note:

64-bit browser is not supported.

2.2.2 WPS (WI-FI Protected Set-up)

Before using WPS wireless connection, you need to:

- Make sure that your wireless router has the WPS function.
- WPS button on the wireless router is typically located on the front panel or rear panel. TP-LINK router's WPS button is called QSS (Quick Security Setup).
- Make sure that the ethernet cable and the camera is disconnected.



- (1) Press and hold the WPS button for three seconds. The Network light of the camera begins to twinkle at high frequency. (every 0.4 seconds)
- (2) Press and hold the WPS button for three seconds on your wireless router within 60 seconds. Then the camera will automatically create a secure wireless connection to your router in about 60

seconds.

- (3) The Equipment Search Tool will search the camera's LAN IP. Make sure the PC and the camera share the same subnet.

NOTE :

The security mode of router cannot be WEP, or else the WPS settings may be failed.

2.3 Access the Camera in WAN

2.3.1 Static IP Addresses

Users with static IP addresses do not need to set DDNS service settings for remote access. After you have finished connecting the camera using the LAN IP address and port forwarding, you can access the camera directly from Internet using the WAN IP address and port number.

How to Obtain the WAN IP address from a public website ?

To obtain your WAN IP address, enter the following URL in your browser: <http://www.whatismyip.com>. Your current WAN IP will be shown on the webpage.



2.3.2 Remote Access

If you want to access your camera by web browser outside of your LAN, you need to configure following configurations.

1. Choose "Settings" on the top of the camera web page, then go to the "Network > IP Configuration" section on the left side of the screen, then uncheck the Obtain IP DHCP.

| IP Configuration | |
|--|---------------|
| Obtain IP From DHCP <input type="checkbox"/> | |
| IP Address | 192.168.1.100 |
| Subnet Mask | 255.255.255.0 |
| Gateway | 192.168.1.1 |
| Primary DNS Server | 211.162.78.1 |
| Secondary DNS Server | 211.162.78.2 |

IP Address: Set this in the same subnet as your computer , or keep it as default.
Subnet Mask: Keep it as default.
Gateway and DNS Server: Set it to the IP address of your router.

2. Enable UPnP and DDNS in the camera's settings page. We recommend you to use the DDNS by factory default.

UPnP

Enable UPnP: No

Select Yes and click Save.

DDNS

Enable DDNS ☒

Manufacturer's DDNS

| | | |
|---------------------|----------------------|-------------------------|
| Manufacturer's DDNS | test09.myfoscaml.org | Restore DDNS to factory |
|---------------------|----------------------|-------------------------|

Third Party DDNS

| | |
|-------------|--|
| DDNS Server | |
| Domain | |

Click Enable DDNS and click Save.
The content in the Manufacture' s DDNS column is the domain name of your camera.

3. You can see the port of your camera here. If you want to set Remote Access for several cameras on the same network, you will need to change the HTTPS port for each camera.

| Port | |
|------------|-----|
| HTTP Port | 88 |
| HTTPS Port | 443 |
| ONVIF Port | 888 |
| RTSP port | 554 |

4. If the UPnP of the router has been enable, you do not need to perform following steps. Otherwise, you need to select one of the following methods to configure port forwarding on your router. For these steps, we will be using the TP-LINK brand wireless router as an example.

- **If there is a UPnP function in your router:**

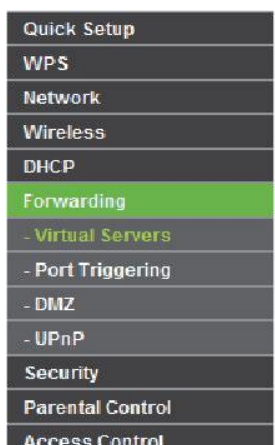
Choose “Forwarding > UPnP”, make sure that the Current UPnP Status is Enabled.

| UPnP | | | | | | |
|---|-----------------|---------------|----------|---------------|------------|--------|
| Current UPnP Status: Enabled Disable | | | | | | |
| Current UPnP Settings List | | | | | | |
| ID | App Description | External Port | Protocol | Internal Port | IP Address | Status |
| Refresh | | | | | | |

- **If there is no UPnP function in your router:**

You need to manually add port forwarding, refer to the following steps. You need go to the “Forwarding > Virtual Servers” panel for setup.

| Virtual Servers | | | | | | |
|---|--------------|---------------|------------|----------|--------|--------|
| ID | Service Port | Internal Port | IP Address | Protocol | Status | Modify |
| Add New... Enable All Disable All Delete All | | | | | | |
| <div style="border: 1px solid red; padding: 5px; display: inline-block;">Click Add New.</div> Previous Next | | | | | | |



Add or Modify a Virtual Server Entry

Service Port: (XX-XX or XX)
 Internal Port: (XX, Only valid for single Service Port or leave it blank)
 IP Address:
 Protocol:
 Status:
 Common Service Port:

Input the port and IP address of your camera and click Save.



Virtual Servers

| ID | Service Port | Internal Port | IP Address | Protocol | Status | Modify |
|----|--------------|---------------|---------------|----------|---------|---|
| 1 | 443 | 443 | 192.168.1.100 | ALL | Enabled | Modify Delete |

Here you have finished the Port Forwarding setup.

5. Now you can access your IP camera by https://domain name: HTTPS port via the Internet.

2.4 Using the VLC player

The camera supports RTSP streaming, here you can view the camera by VLC player.

RTSP URL [rtsp:// \[user name\]\[:password\]@IP:Port number/videostream](rtsp://[user name][:password]@IP:Port number/videostream)

The part in the square brackets can be omitted.

user name & password: The user name and password to access the camera. This part can be omitted.

IP: WAN or LAN IP address.

Port NO. : If there is the RTSP port number on the Port page, you must only use RTSP port number. otherwise, you must only use http port number.

Video stream: Three modes are supported: video Main, video Sub and audio. Video Sub is a better choice in bad network condition. If you select audio, you can only hear sound without seeing picture.

For example:

IP: 192.168.1.11

RTSP Port number: 554

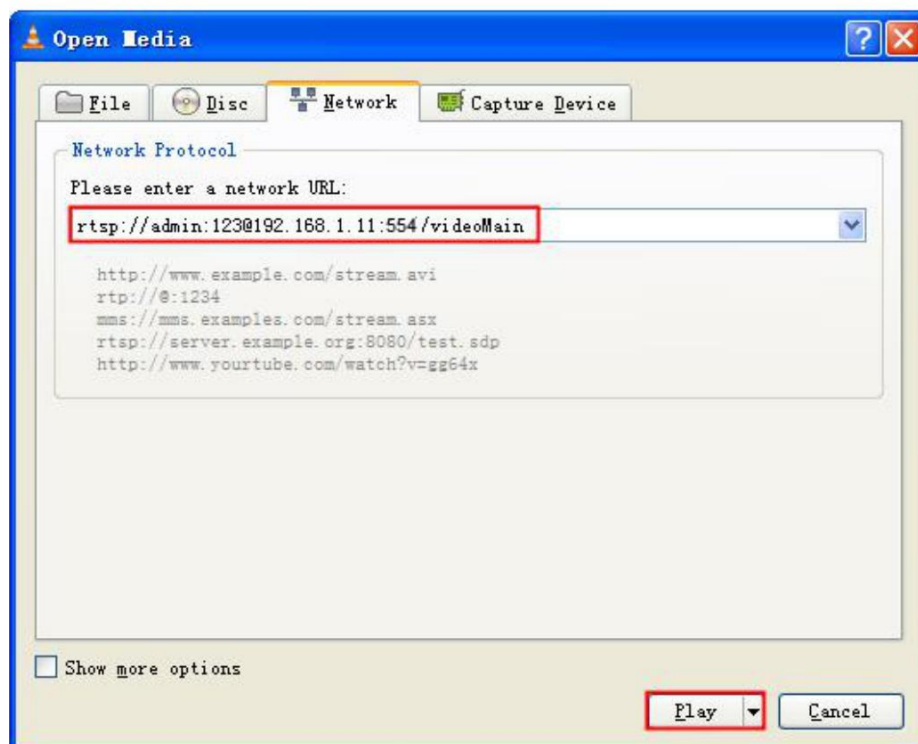
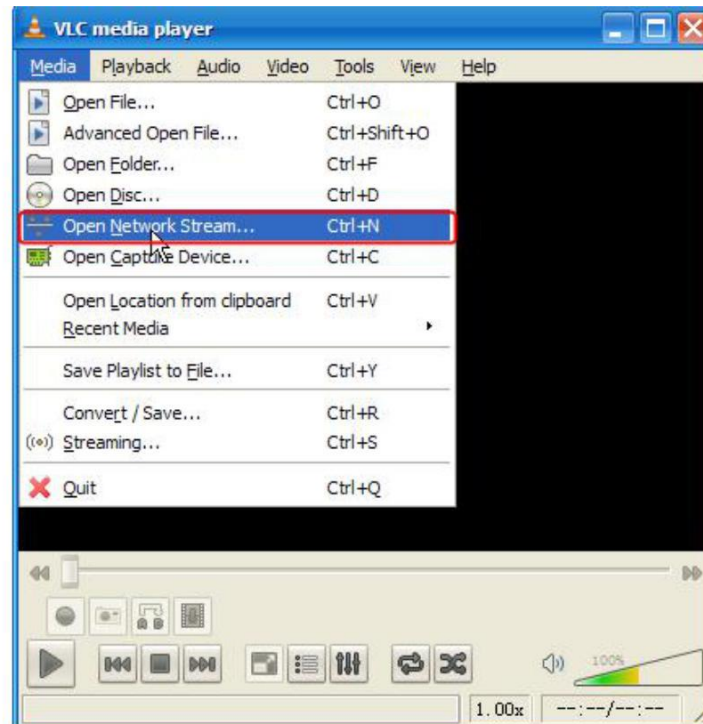
User name: admin

Password: 123

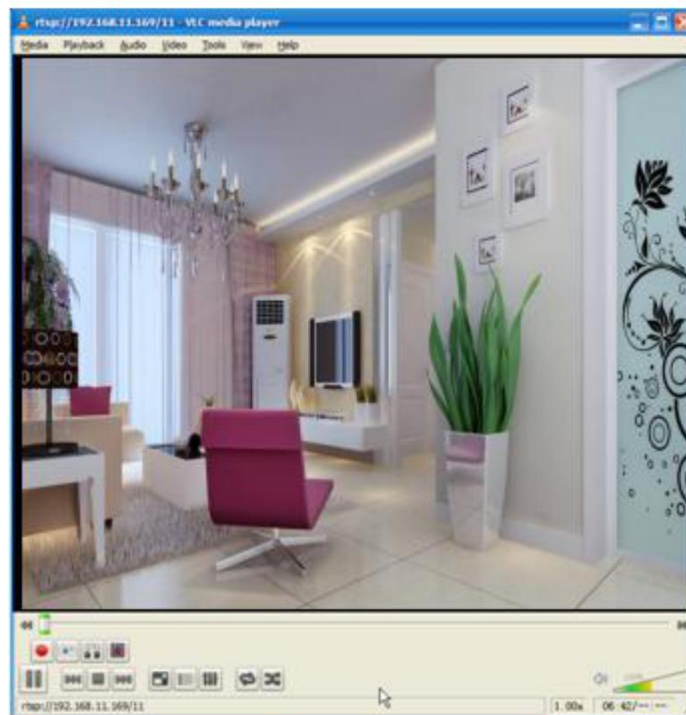
Enter either one of the following four URLs in the VLC

1. `rtsp://admin:123@192.168.1.11:554/videoMain`
2. `rtsp:// @192.168.1.11:554/videoMain`
3. `rtsp://:123@192.168.1.11:554/videoMain`
4. `rtsp://admin@192.168.1.11:554/videoMain`

Open the VLC, and go to “Media” -- “Open Network Stream” option, then enter the URL in VLC.



Sometimes you may need to enter the user name and password for another time. Click OK and you can see the real-time preview.



If you cannot play the video in the VLC player, please check the port mapping. You can read Quick Installation Guide about how to configure port forwarding.

NOTE:

If you modify the camera's username or password, you had better reboot the camera to apply the new username and password in authentication in the VLC.

2.5 IP camera connection to the server

Device supports ONVIF 2.2.1 protocol, You can easily access NVR with ONVIF or server with ONVIF.

3 Surveillance Software GUI

Please refer to the section 2.1 if you install the camera for the first time. You can start to learn about software operation in the computer.

3.1 login Window

The screenshot shows the login window of the surveillance software. It features four numbered sections: 1. Username and Password fields, 2. Stream selection dropdown, 3. Language selection dropdown, and 4. Login button.

Section1 Enter the Username and password

The default administrator username is “admin” with no password, please change the password the first time you use and prevent unauthorized users login the camera.

Section2 Stream

The camera supports two stream modes: Main stream and sub stream. Select Main stream if you want to access the camera from LAN and sub stream will be better if you want to access the camera from Internet.

Note:

Select sub stream to ensure a more fluent video under narrow network bandwidth.

Section3 Select the language

You click on the language dropdown list to select language.

Section4 login the camera

Click “Login” button.

NOTE:

When setting up your camera for the first time, it will request that you modify the default username and/or password if both are still set to default. Input the new username and password, click "Modify" to complete the modification. You will now use the new username and password to login to the camera in the future.

Username

New username

New password

Security Level

Confirm the password

Modify

3.2 Setup Wizard

You will go to “Setup Wizard” automatically after your first-login, where you can set the basic parameters of camera, such as camera name, camera time, wireless settings, IP configuration.

3.3 Surveillance Window

1 FOSCAM

2

3

4 Color Adjustment

5 00:00

6

Mode 50Hz

Stream HD Mode/ 720P/ 25

☐ Mirror ☐ Flip

Live Video Settings Playback Indoor IP Camera

C1 Lite

Section 1 FOSCAM Logo/ Live Video / Settings/Playback

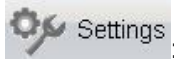


: FOSCAM LOGO



LiveVideo

: Path to surveillance window. Click this button to go back to the surveillance window



Settings

: Path to Administrator Control Panel, Click it, to go to Administrator Control Panel and do advanced settings.

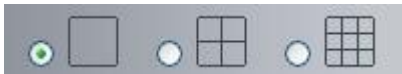


Playback

: Click this button to go back to the Playback panel to view the stored audio files

stored in the SD Card.

Section 2 Multi-Device Window



The firmware inside the camera supports up to 9 cameras being monitored at the same time. You can add other cameras in multi-device setting.

Section 3 Mode/ Stream / HDR / Mirror/ Flip buttons / Zoom

● Mode

- 1) 50HZ -----Indoor surveillance (Region: Europe, China)
- 2) 60HZ -----Indoor surveillance (Region: USA, Canada)
- 3) Outdoor-----Outdoor surveillance

● Stream

The default stream supports multiple modes, For example: HD Mode/720P/23fps/2M meanings: Stream type / Resolution / Maximum frame rate/ Bit rate. (Different models support different specific mode.)

Stream type : It is used to identify the stream type.

Resolution

The bigger the resolution, the better of the image quality is. If you are accessing the camera via internet and want to get more fluent video streaming, please select resolution VGA.

Maximum frame rate

You should lower frame rate when the bandwidth is limited. Normally, when the frame rate above 15, you can achieve fluently video. The maximum frame rate for each model is different, please see the "Specifications".

Bit rate

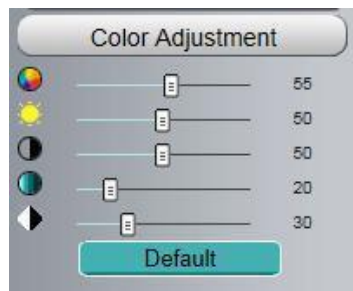
Generally speaking, the larger the bit rate is, the clearer video will become. But the bit rate configuration should combine well with the network bandwidth. When the bandwidth is very narrow, and bit rate is large, that will lead to video can not play well.

You can reset the stream type on **Settings-> Video-> Video Settings** panel.

After changing, please reboot the camera and you can see the modification.

Section 5 Color Adjustment

In this page, you can tune Hue, Brightness, Contrast, Saturation, and Sharpness to get higher quality.



Section 6 OSD

If you have added time and camera name in the video, you can see it in the live window.

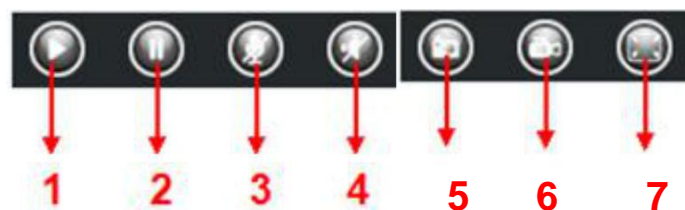
Go to **Settings ---Basic settings---Camera name** panel, and you can change another device name.

The default device name is anonymous.

Go to **Settings ---Basic settings---Camera time** panel and adjust the device time.


Go to **Settings ---Video---On Screen Display** panel, you can add or no add OSD.


Section 7 Play/ Stop/ Talk/ Audio/ Snap/ Record/ Full screen button




1----- Play Click it to play the video of the camera

2----- Stop Click it to stop the video of the camera

3----- Talk Click the button and the icon will become to  , then talk to the microphone that connected with PC, people around the camera can here your voice. Click the icon again and stop talking.

4----- Audio Click this icon, the icon will become to  you can hear the sound around the camera by the earphone or speakers that connected with PC.

5----- Snapshot Click it to make snapshot and it pop-up a window which picture you snapshot, right click in the window and save the picture to anywhere you want.

6----- Record Click the icon  and the camera start recording, you can see a green dot in the live window. Click again and stop recording. The default storage path is C:\IPCamRecord. You can change

the storage path: Go to Settings- >Record->Storage Location panel.

7----- Full Screen Click it to make full-screen, or you can double click the surveillance screen to make full-screen. Double click again and exit full-screen.

4 Advanced Camera Settings

Click the button “**Settings**”, goes to Administrator Control Panel to make advanced camera settings.


4.1 Setup Wizard

Please go to section 3.2 to find the way to set it.

4.2 Status

Status contains four columns: Device Information, Device Status, Session Status and Log, it will show you various information about your camera.

4.2.1 Device Information

| Device Information | |
|---|---------------------|
|  Refresh | |
| Camera Model | C1-Lite |
| Camera Name | C1-Lite |
| Camera ID | E8ABFA64B38F |
| Camera Time | 2015/09/22 07:17:45 |
| System Firmware Version | 1.9.3.15 |
| Application Firmware Version | 2.52.2.16 |
| Plug-In Version | 3.3.0.7 |

Camera Model: The camera model NO.

Camera Name: The Device Name is a unique name that you can give to your device to help you identify it. Click **Basic Settings** and go to **Camera name** panel where you can change your camera name. The default device name is anonymous.

Camera ID: Display the wired MAC address of your camera. For example Device ID is 000C5D00008, the same MAC ID sticker is found at the bottom of the camera.

Camera Time: The system time of the device. Click **Basic Settings** and go to **Camera time** panel and adjust the time.

System Firmware Version: Display the System Firmware version of your camera.


Application Firmware Version: Display the application firmware version of your camera.

Plug-In Version: Display the plug-in version of your camera.

4.2.2 Device Status


On this page you can see device status such as Alarm status/ Record Status ,DDNS status ,WIFI status

and so on.

| Device Status | |
|---|-------------------|
|  Refresh | |
| Motion alarm status | Disabled |
| Sound alarm status | Disabled |
| Recording Status | Not Recording |
| SD Card Status | No SD card |
| SD Card Free Space | 0KB |
| SD Card Total Space | 0KB |
| NTP Status | Failed |
| DDNS Status | Disabled |
| UPnP Status | Disabled |
| WiFi Status | Connected to: doc |

4.2.3 Session Status

Session status will display who and which IP is visiting the camera now.

| Session Status | |
|---|--------------|
|  Refresh | |
| Username | IP Address |
| 1 | 172.16.8.115 |

4.2.4 Log

The log record shows who and which IP address accessed or logout the camera.

| Pages:83 | | | | | Refresh |
|----------|---------------------|-------|----------------|---------|------------|
| | | | | | <<123>> Go |
| NO. | Time | User | IP | Log | |
| 1 | 2012-09-18 02:11:45 | | | | |
| 2 | 2012-09-18 01:48:56 | | | | |
| 3 | 2012-09-18 01:29:51 | admin | 192.168.1.102 | Log out | |
| 4 | 2012-09-18 01:27:54 | admin | 218.17.160.187 | Log out | |
| 5 | 2012-09-18 01:26:21 | admin | 192.168.1.100 | Log out | |
| 6 | 2012-09-18 01:25:42 | admin | 218.17.160.187 | Login | |
| 7 | 2012-09-18 01:25:15 | admin | 192.168.1.102 | Login | |
| 8 | 2012-09-18 01:25:13 | admin | 192.168.1.102 | Log out | |
| 9 | 2012-09-18 01:24:46 | admin | 192.168.1.100 | Login | |
| 10 | 2012-09-18 01:21:44 | admin | 192.168.1.102 | Login | |

Reboot the camera and clear the log records.

4.3 Basic Settings

This section allows you to configure your camera's Name, Time, Mail, User account and Multi-Device.

4.3.1 Camera Name

You can define a name for your camera here such as apple. Click Save to save your changes. The alias name cannot contain special characters.

Camera Name

Save

Refresh

Camera Name

The maximum Device Name length is 20, support English, numbers, letters and symbols

4.3.2 Camera Time

This section allows you to configure the settings of the internal system clocks for your camera.

| | |
|--|--|
| <div>Save</div> <div>Refresh</div> | |
| Time Zone | (GMT) Greenwich mean time; London, Lisbon, (|
| Sync with NTP server <input checked="" type="checkbox"/> | |
| NTP Server | Auto |
| Device Time | <div>2016-02-26 08:15:53</div> <div>Sync with PC</div> |
| Date Format | YYYY-MM-DD |
| Time Format | 24-hour |
| use DST <input checked="" type="checkbox"/> | |
| From | April first Sunday 2 : 00 |
| To | October the last one Sunday 2 : 00 |
| Ahead Of Time | 0 Minute |

Time Zone: Select the time zone for your region from the dropdown menu.

Sync with NTP server: Network Time Protocol will synchronize your camera with an Internet time server. Choose the one that is closest to your camera.

Sync with PC: Select this option to synchronize the date and time of the Network Camera with your computer.

Manually: The administrator can enter the date and time manually. Note select the date and time format.

use DST: Select the daylight saving time from the dropdown list.

Click **Save** button and submit your settings.

NOTE: If the power supply of camera is disconnect, you need set the camera's time again.

4.3.3 User Accounts

Here you can create users and set privilege, **visitor**, **operator** or **administrator**. The default user account is admin, with a blank password. You can enter the users accounts of visitor, operator and administrator Manually.

User Accounts

Refresh

| NO. | Username | Privilege |
|-----|----------|---------------|
| 1 | 1 | Administrator |
| 2 | | |
| 3 | | |
| 4 | | |
| 5 | | |
| 6 | | |
| 7 | | |
| 8 | | |

Username
Privilege Visitor
☐ Change username
☐ Change password

The maximum username length is 20, including numbers, letters and symbols _ - @ \$ *
The maximum password length is 12, including numbers, letters and symbols ~ ! @ # % ^ * () _ + { } : " ' | < > ? ` - ; ' \ , . /

How to change the password?

Firstly, select the account which you want to change the password, then select "Change password", enter the old password and the new password, lastly click modify to take effect.

User Accounts

Refresh

| NO. | Username | Privilege |
|-----|----------|---------------|
| 1 | foscam | Administrator |
| 2 | admin | Administrator |
| 3 | | |
| 4 | | |
| 5 | | |
| 6 | | |
| 7 | | |
| 8 | | |

Username
Password
New username
New password
Password Security Level
Confirm the password
Privilege Administrator
☒ Change username
☒ Change password


Modify

The maximum length of the user name is 20, support numbers, letters and symbols _ - @ \$ *
The maximum password length is 12, does not support the character & = \$

How to add account ?

Select one blank column, then enter the new user name, password and privilege, last click Add to take effect. You can see the new added account on the Account list.

User Accounts

 Refresh


| NO. | Username | Privilege |
|-----|----------|---------------|
| 1 | foscam | Administrator |
| 2 | admin | Administrator |
| 3 | | |
| 4 | | |
| 5 | | |
| 6 | | |
| 7 | | |
| 8 | | |

Username:
 Password:
 Password Security Level: Low security level.
 Confirm the password:
 Privilege: Administrator ▼
☐ Change username
☐ Change password

Add

The maximum length of the user name is 20, support numbers, letters and symbols _ - @ \$ *
 The maximum password length is 12, does not support the character & = \$

User Accounts

 Refresh

| NO. | Username | Privilege |
|-----|----------|---------------|
| 1 | foscam | Administrator |
| 2 | admin | Administrator |
| 3 | user | Administrator |
| 4 | | |
| 5 | | |
| 6 | | |
| 7 | | |
| 8 | | |

Username:
 Privilege: Administrator ▼
☐ Change username
☐ Change password

Delete

The maximum length of the user name is 20, support numbers, letters and symbols _ - @ \$ *
 The maximum password length is 12, does not support the character & = \$

Delete : Select the account which you want to delete, then click Delete button to take effect.

NOTE: The default admin account cannot be deleted, but you can add other administrator users.

How to change the username ?

Firstly, select the account which you want to change the username, then select "Change username", enter the new password, lastly click modify to take effect.

User Accounts

Refresh

| NO. | Username | Privilege |
|-----|----------|---------------|
| 1 | admin | Administrator |
| 2 | operator | Operator |
| 3 | | |
| 4 | | |
| 5 | | |
| 6 | | |
| 7 | | |
| 8 | | |

Username

operator

New username

opr

Privilege

Operator

☒ Change username
 ☐ Change password

Modify

The maximum length of the user name is 20, support numbers, letters and symbols _ - @\$*

The maximum password length is 12, does not support the character & =

4.3.4 Multi-Camera

If you want to view multi-surveillance screens on one window, you need to login one camera, and set it as the main device, and do Multi-Device Settings, add other cameras to the first one camera. Before you do multi-cams settings, you need to assign different port such as 81, 82, 83, 84, 85, 86, 87, 88 to the cameras if there is 8 cams installed.

The firmware within the camera can support a maximum of 9 devices monitoring all at the same time. This page you can both add FOSCAM MJPEG and H.264 series cameras to the first camera and view multi-surveillance screen on one window.

Add cameras in LAN

In Multi-Device Settings page, you can see all devices searched in LAN. The 1st Device is the default one. You can add more cameras in the list in LAN for monitoring. The camera's software supports up to 9 IP Cameras online simultaneously. Click The 2nd Device and click the item in the Device List in LAN, the Alias, Host and Http Port will be filled in the boxes below automatically. Enter the correct username and password then click Add. Add more cameras in the same way.

Multi-Camera

| | | |
|--------------------------------|--|---------|
| Cameras On LAN | FI9821P(172.16.0.94) 1111(172.16.1.71) FOSCAM(172.16.0.27) anonymous(172.16.0.179) FOSCAM(172.16.0.105) | Refresh |
| The 1st Camera | This Camera | |
| The 2nd Camera | None | |
| Camera Model | H264 | |
| Camera Name | anonymous | |
| Host | 172.16.0.179 | |
| HTTP Port | 80 | |
| Media Port | 80 | |
| Username | admin | |
| Password | | |
| | <input type="button" value="Add"/> <input type="button" value="Delete"/> | |
| The 3rd Camera | None | |
| The 4th Camera | None | |

1 Click it, camera model, alias, host and HTTP Port will be filled in the following boxes automatically.

2 Enter the User name and password of the 2nd camera.

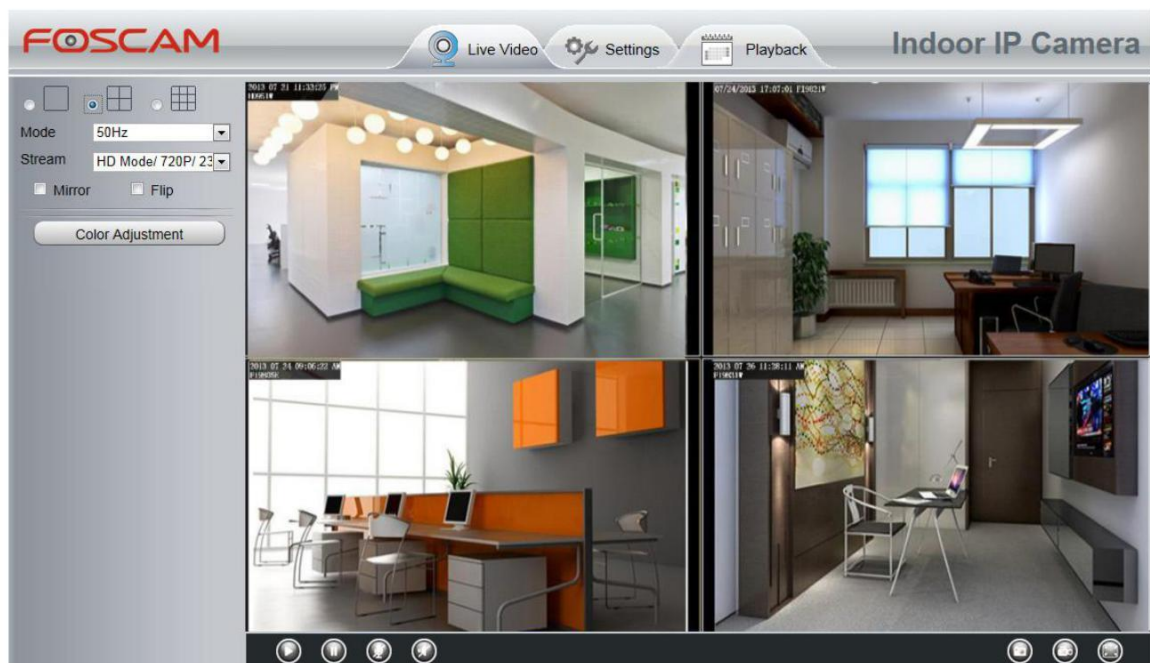
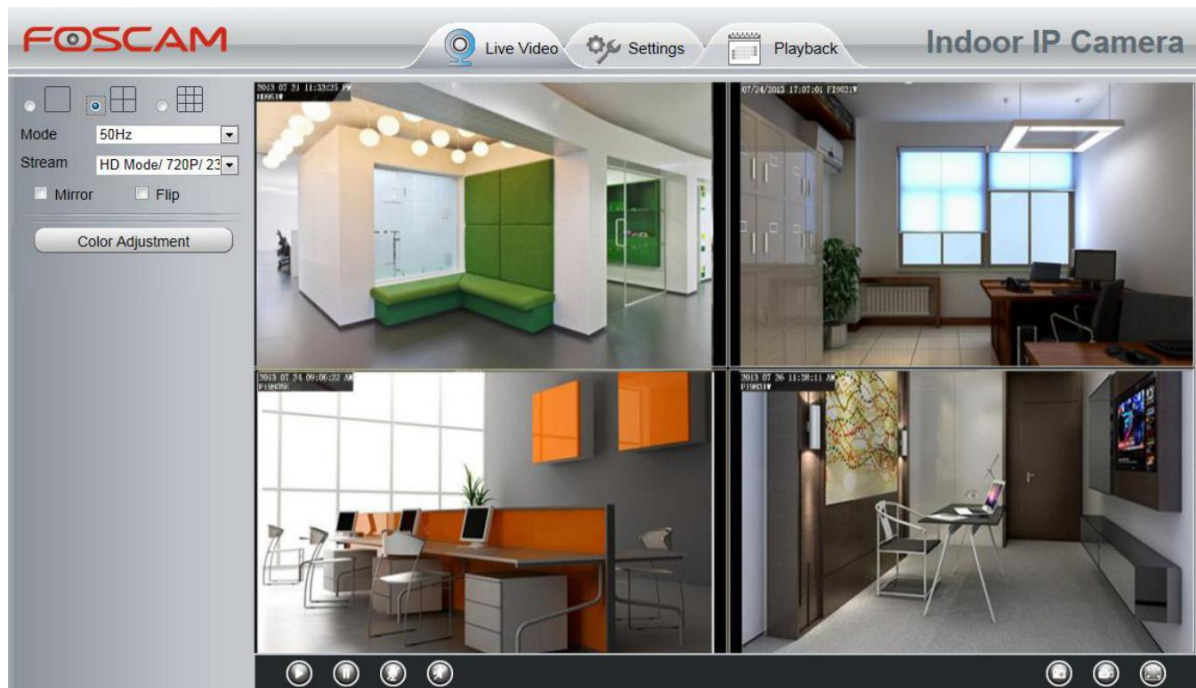
3 Click Add to take effect.

Camera Model: Our Company produces two series cameras: MJPEG and H.264. Here will show you which series the camera belongs to.

| | |
|--|---|
| <input type="button" value="Refresh"/> | |
| Cameras On LAN | anonymous(192.168.11.193) FI9821W for ebuyer (192.168.11.241) anonymous(192.168.11.203) anonymous(192.168.11.243) |
| | Refresh |
| The 1st Camera | This Camera |
| The 2nd Camera | anonymous(192.168.11.203) |
| The 3rd Camera | FI9821W for ebuyer (192.168.11.241) |
| The 4th Camera | anonymous(192.168.11.203) |
| The 5th Camera | None |
| The 6th Camera | None |
| The 7th Camera | None |
| The 8th Camera | None |
| The 9th Camera | None |

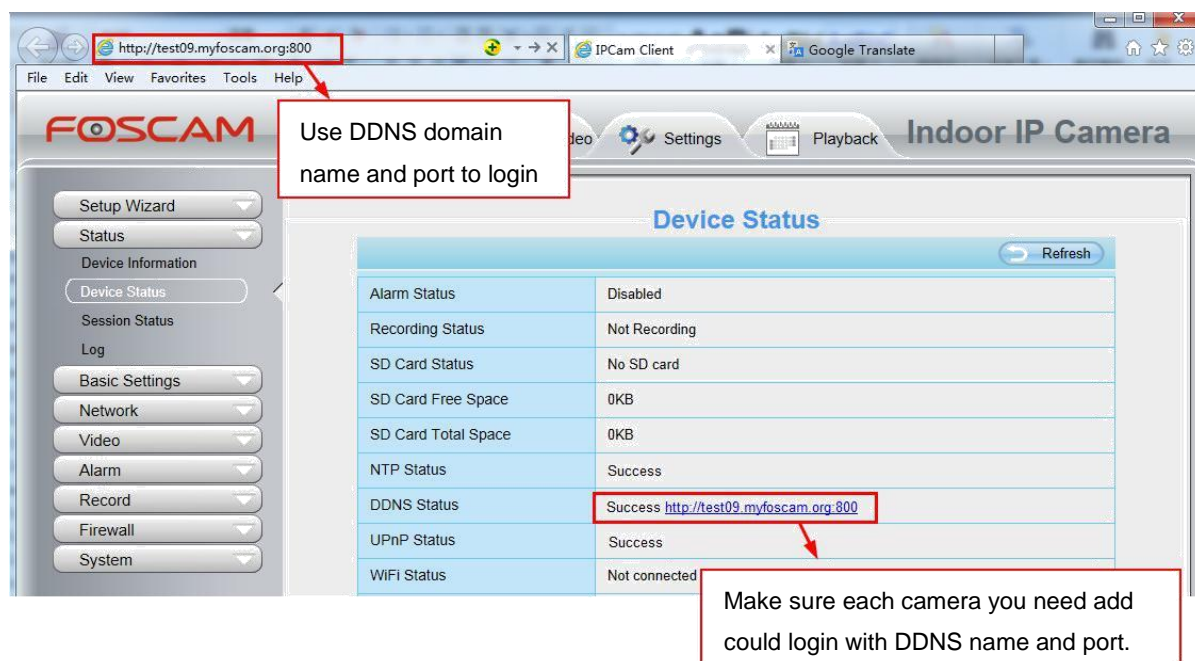
Note: If you want to access your camera remotely, make sure you are able to access it separately through a browser.

Back to **Surveillance Windows**, and click Four Windows option, you will see four cameras you added.



Add cameras in WAN

If you want to view all cameras via the internet(remote computer), you will need to add them using DDNS domain name. Firstly, make sure all of the cameras you added can be accessed through the internet. Login to the first camera using a DDNS domain name and port.



Click **Multi-Device Settings**. Choose **The 2nd Device**. Fill in the 2nd camera's name, DDNS domain name, port number. Enter user name and password and then choose Add.

| The 1st Camera | This Camera |
|---|--|
| <u>The 2nd Camera</u> | F19821W(172.16.0.47) |
| Camera Model | H264 1 |
| Camera Name | F19821W 2 |
| Host | 172.16.0.47 |
| HTTP Port | 88 3 |
| Media Port | 88 |
| Username | admin 4 |
| Password | |
| 5 Add Delete | |

1 ---- The camera model: MJ or H264.

2 ---- The 2nd camera's name

3 ---- Fill in the 2nd camera's DDNS host not LAN IP

NOTE: The MJ series have the same HTTP Port NO. and Media Port NO.

4 ---- Enter the 2nd camera's user name and password

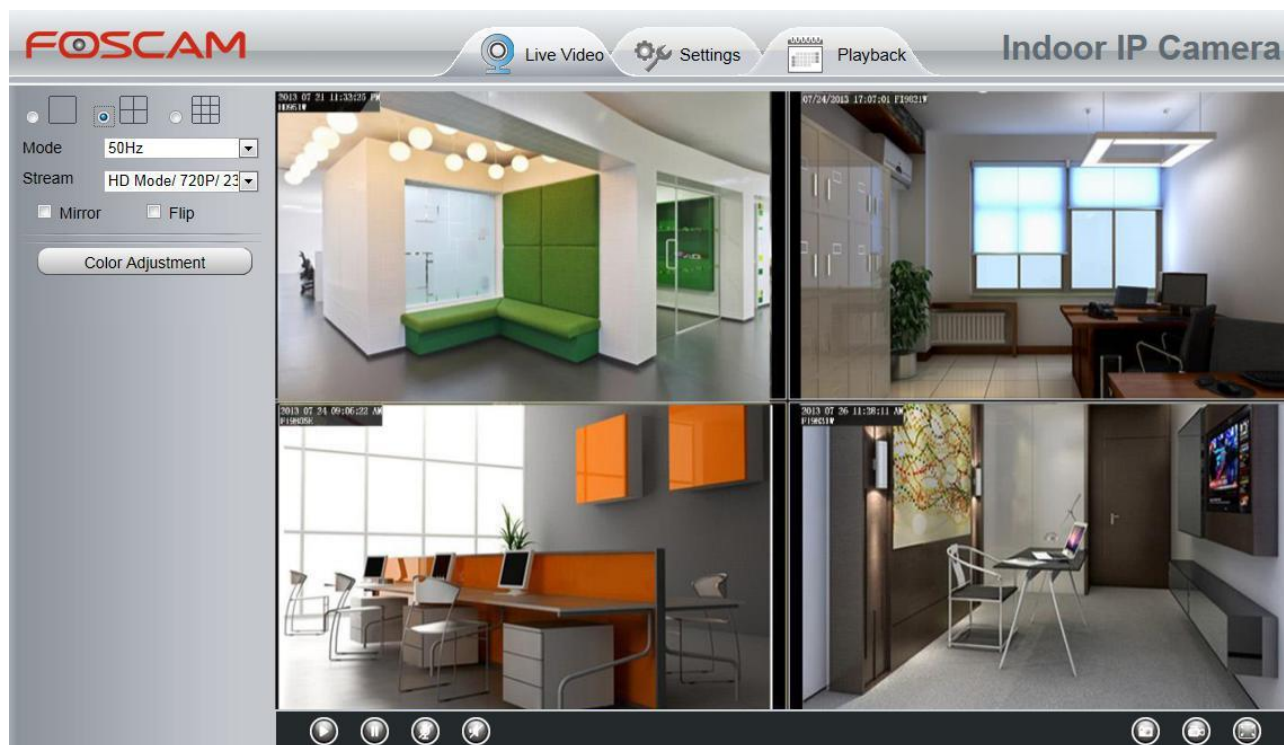
5 ---- Click Add button and to take effect

NOTE: Here the Host must be entered as the second camera's DDNS domain name, not its LAN IP.

| | | | |
|--------------------------------|-------------------------------------|---|---------|
| Cameras On LAN | | anonymous(192.168.11.193) F19821W for ebuyer (192.168.11.241) anonymous(192.168.11.203) anonymous(192.168.11.243) | Refresh |
| The 1st Camera | This Camera | | |
| The 2nd Camera | F19821W(172.16.0.47) | | |
| The 3rd Camera | F19821W for ebuyer (192.168.11.241) | | |
| The 4th Camera | anonymous(192.168.11.203) | | |
| The 5th Camera | None | | |
| The 6th Camera | None | | |
| The 7th Camera | None | | |
| The 8th Camera | None | | |
| The 9th Camera | None | | |

Note: If you want to access your camera remotely, make sure you are able to access it separately through a browser.

Return to video window. You will see all of the cameras accessible through the internet. When you are away from home, you can use the first camera's DDNS domain name and port to view all the cameras via internet.



4.3.5 Status Light

You can enable or disable status light.

Status Light

Save Refresh

| | |
|---------------------|----------------------------------|
| Enable Status Light | <input type="text" value="Yes"/> |
|---------------------|----------------------------------|

4.4 Network

This section will allow you to configure your camera's IP, DDNS, Wireless Settings, UPnP and Port.

4.4.1 IP Configuration

If you want to set a static IP for the camera, please go to **IP Configuration** page. Keep the camera in the same subnet of your router or computer.

Save Refresh

Obtain IP From DHCP ☐

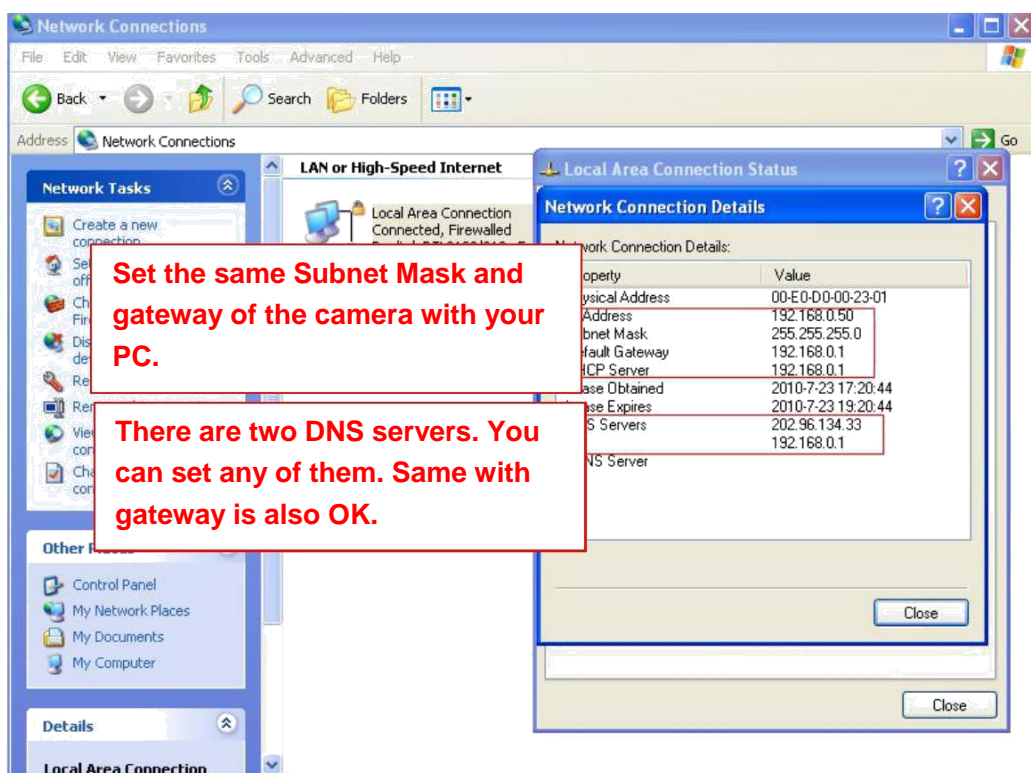
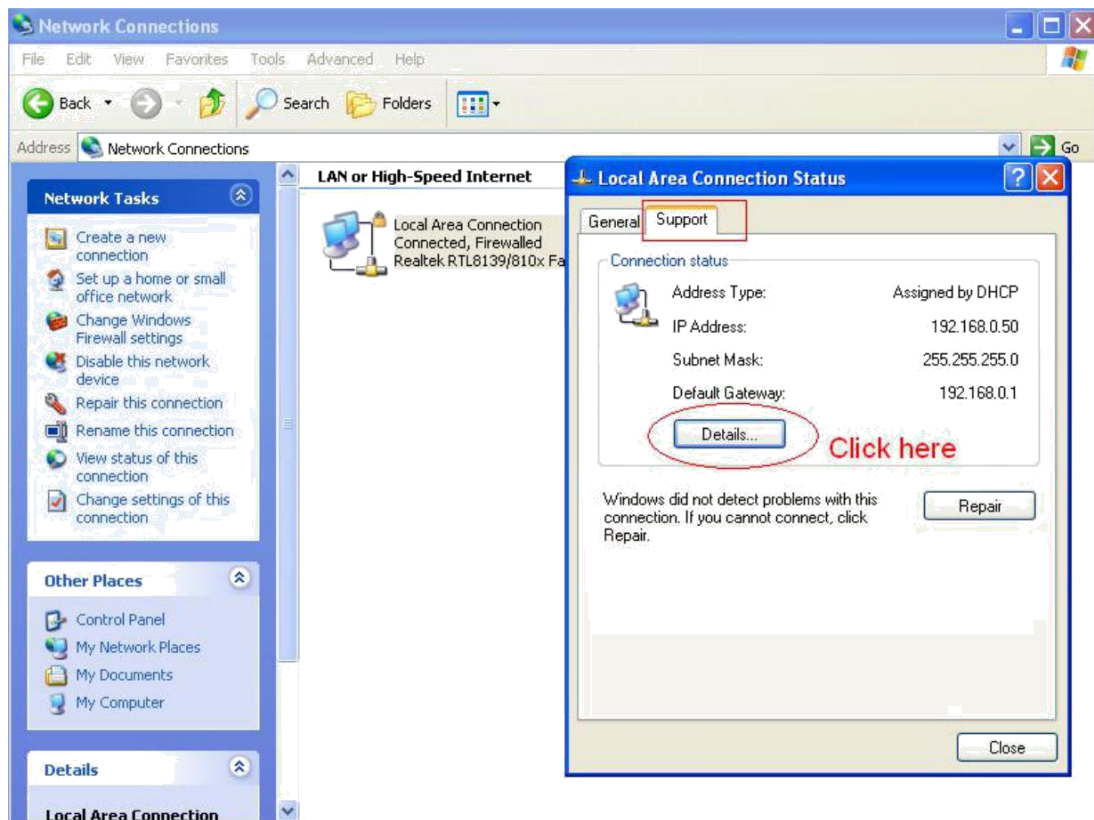
| | |
|----------------------|---|
| IP Address | <input type="text" value="192.168.0.109"/> |
| Subnet Mask | <input type="text" value="255.255.255.0"/> |
| Gateway | <input type="text" value="192.168.0.1"/> |
| Primary DNS Server | <input type="text" value="192.168.0.1"/> |
| Secondary DNS Server | <input type="text" value="202.96.134.133"/> |

Note: Once you save your settings, the camera will restart.

Changing settings here is the same as using the Equipment Search Tool.

It is recommended that you use the subnet mask, gateway and DNS server from your locally attached PC. If you don't know the subnet mask, gateway and DNS server, you can check your computer's local area connection as follows:

Control Panel → Network Connections → Local Area Connections → Choose Support → Details



If you don't know the DNS server, you can use the same settings as the Default Gateway.

4.4.2 Wireless Settings

Step 1: Choose “**Settings**” on the top of the camera interface, and go to the “**Network**” panel on the left side of the screen, then click “**Wireless Settings.**”

Click the **Scan** button and the camera will detect all wireless networks around the area. It should also display your router in the list.

Wireless Settings

Save Refresh

Wireless Network List

| SSID(Network Name) | Encryption | Quality |
|--------------------|------------|---------|
| wutingjun | WPA/WPA2 | ... |
| dlink-chenchen2.4G | WPA/WPA2 | ... |
| WEILI | WPA/WPA2 | ... |
| TP-LINK_3B9E4E | WPA/WPA2 | ... |
| TPGuest_E0EE | Unencrypt | ... |
| TPlink-zf | WPA/WPA2 | ... |
| HUAWEI-DQB | WPA/WPA2 | ... |
| TP-LINK_YF | WPA/W | ... |
| NETGEAR95 | WPA | ... |
| TP-LINK_CB209C | WPA/WPA2 | ... |

Pages: 4 << 1 2 3 >> Go

Click the Scan button to search for wireless networks.

Click the Page number to see other wireless networks devices if there are more than 10.

Step 2: Click the SSID (name of your router) in the list, the corresponding information related to your network, such as the name and the encryption, will be filled into the relevant fields automatically.

You will only need to fill in the password of your network. Make sure that the SSID, Encryption and the password you filled in are exactly the same for your router.

Wireless Settings

Save Refresh

Wireless Network List

| SSID(Network Name) | Encryption | Quality |
|-----------------------|------------|---------|
| TP-LINK_B18958 | Unencrypt | ... |
| TP-LINK_llyo | WPA/WPA2 | ... |
| maqab | WPA/WPA2 | ... |
| TP-LINK_YF | WPA/WPA2 | ... |
| Network-9F8700E207022 | WPA/WPA2 | ... |
| TP-LINK_51BAB4 | WPA/WPA2 | ... |
| TP-LINK_wyy | WPA/WPA2 | ... |
| wjx | Unencrypt | ... |
| zhwwang_1 | WEP | ... |
| TP-LINK_B2637A | Unencrypt | ... |

SSID: TP-LINK_51BAB4

Encryption: WPA/WPA2

Password:

1 Click the SSID of your router and the relevant information will be filled in the fields automatically.

2 Enter the password of your router.

Step 3: Please click on the **Save** button after all settings have been entered and disconnect the network cable. Never shut down the power of the camera until the IP camera is able to connect to the wireless network.

The LAN IP address will disappear on the window of Equipment Search Tool when the camera is configuring a wireless connection. Wait about 1 minute, the camera should obtain a wireless connection, and the LAN IP of the camera will show again on the window of the Equipment Search Tool. The IP address may have changed after the camera receives a wireless connection; we recommend setting a static local IP address if this IP address changes by right clicking the camera in Equipment Search Tool, setting a static IP, and pushing OK.

Congratulations! You have set up the wireless connection of the camera successfully.

4.4.3 Soft AP Password Settings

For the safety of your camera, we recommend you change the Soft AP password.

| Soft AP Password Settings | |
|--|---|
| <div><div>Save</div><div>Refresh</div></div> | |
| SSID | C1 Lite_000001 |
| Encryption | WPA/WPA2 |
| Password | <input type="password" value="••••••••"/> |
| New password | <input type="password"/> |
| Security Level | <input type="text"/> |
| Confirm the password | <input type="password"/> |

4.4.4 DDNS

FOSCAM camera has embedded a unique DDNS domain name when producing, and you can directly use the domain name, you can also use the third party domain name.

FOSCAM domain name

Here take **test09.myfoscam.org** for example. Go to option of DDNS on the **Settings->Network** panel, you can see the domain name.

Save Refresh

Enable DDNS ☒

Manufacturer's DDNS

Manufacturer's DDNS Restore DDNS to factory

Third Party DDNS

DDNS Server

Domain

Now you can use **http:// Domain name + HTTP Port** to access the camera via internet.
 Take hostname **test09.myfoscam.org** and HTTP Port no. 800 for example, the accessing link of the camera via internet would be **http:// test09.myfoscam.org:800**

http://test09.myfoscam.org:800

File Edit View Favorites Tools Help

FOSCAM Live Video Settings Playback Indoor IP Camera

Setup Wizard Status Device Information Device Status Session Status Log Basic Settings Network Video Alarm Record Firewall System

Device Status Refresh

| | |
|---------------------|---|
| Alarm Status | Disabled |
| Recording Status | Not Recording |
| SD Card Status | No SD card |
| SD Card Free Space | 0KB |
| SD Card Total Space | 0KB |
| NTP Status | Success |
| DDNS Status | Success http://test09.myfoscam.org:800 |
| UPnP Status | Success |
| WiFi Status | Not connected |

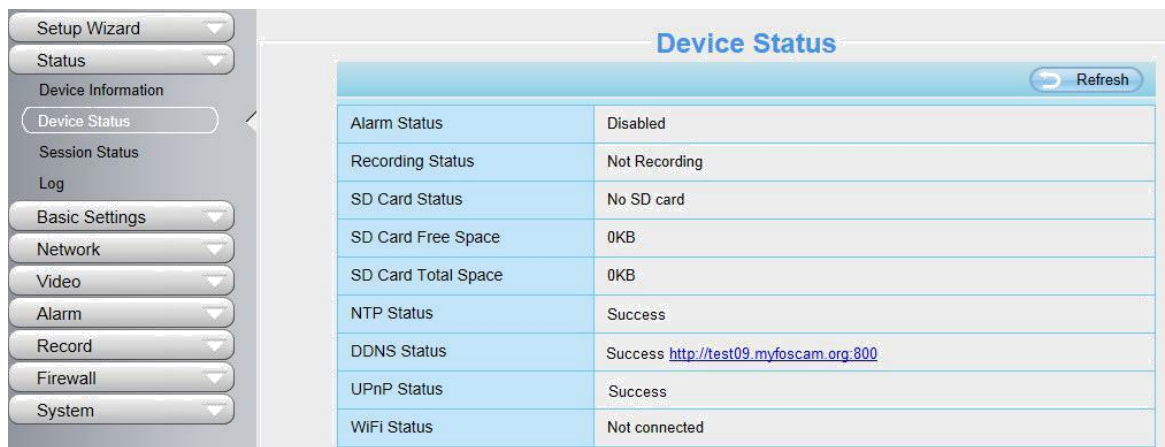
Restore DDNS to factory: If you have configured Third Party DDNS successfully, but you want to use Manufacturer's DDNS again , here click this button and start Manufacturer's DDNS Service. User can also use third part DDNS, such as **www.no-ip.com. ,www. 3322.com**

4.4.5 UPnP

Save Refresh

Enable UPnP

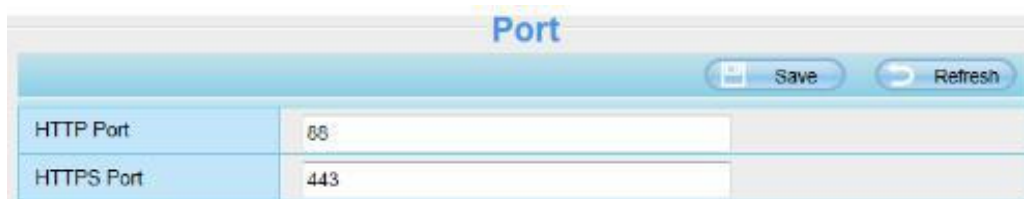
The default UPnP status is closed. You can enable UPnP, then the camera's software will be configured for port forwarding. Back to the **"Device Status"** panel, you can see the UPnP status:



The camera's software will be configured for port forwarding. There may be issues with your routers security settings, and sometimes may error. We recommend you configure port forwarding manually on your router.

4.4.6 Port

This camera supports HTTP Port. HTTP Port is used to access the camera remotely. If you want to access the camera and view the video, the HTTP Port must both be configured correctly.

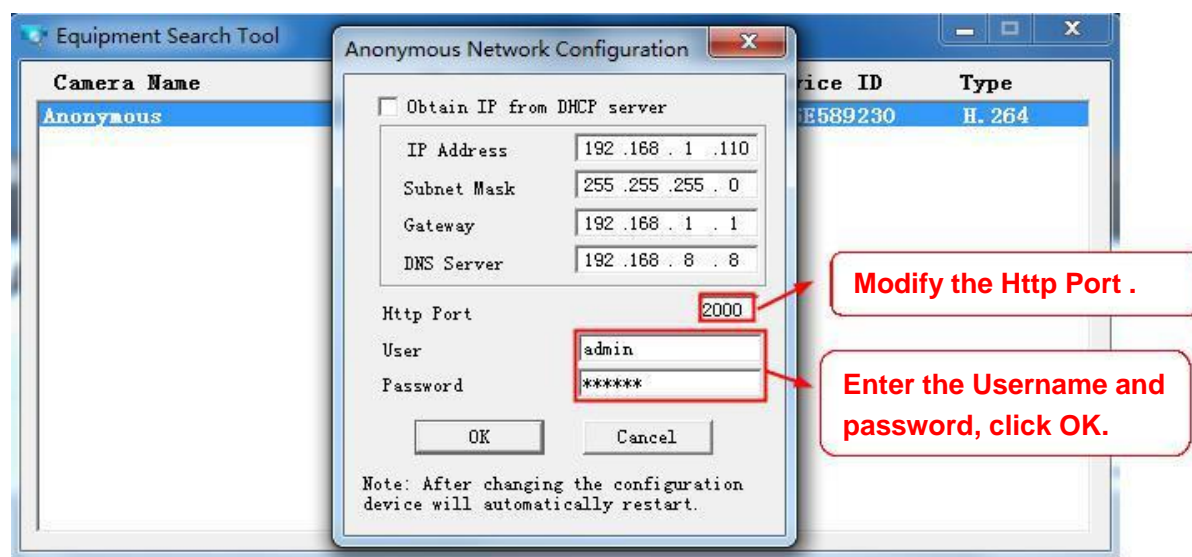


HTTP port: By default, the HTTP is set to 88. Also, they can be assigned with another port number between 1 and 65535. But make sure they can not be conflict with other existing ports like 25, 21.

HTTPS port: The default port is 443. You can use the url to access the camera: **https:// IP + HTTPS port.**

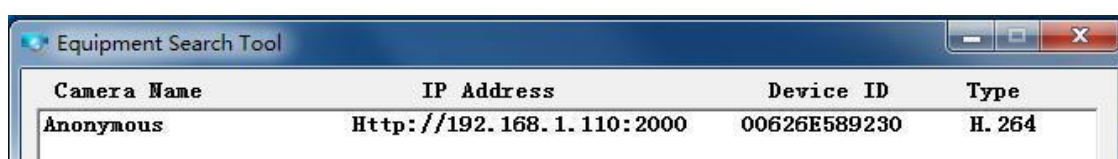
Another way to change the HTTP port NO.

Step 1: Open the Equipment Search Tool, select the camera you would like to change the port of, right click on the IP address, and click on "Network Configuration", this brings up the network configuration box as flowing figures.



Step 2: Enter the username and password of the Administrator (default username is admin with a blank password), and click “OK” to apply changes.

Step 3: Wait around 10 seconds, you'll see that the camera's LAN IP address has changed. In our example it was changed to 2000, so we see http://192.168.1.110:2000 in Equipment Search Tool. Also, the LAN IP address is now fixed at a static IP address of http://192.168.1.110:2000. This IP address will not change even if the camera is powered off and back on, the camera will remain on this LAN IP address. This is very important that a static LAN IP address is set, or you may have problems later with remote access and seeing the camera remotely if the camera loses power and reconnects on a different LAN IP address. Make sure you set a static LAN IP address!



If the camera cannot be accessed, please make sure the port forwarding is succeed.

4.4.7 Mail Settings

If you want the camera to send emails when motion has been detected, here Mail will need to be configured.

| 5 | | Save | Refresh |
|--|--|------|---------|
| Enable <input checked="" type="checkbox"/> | | | |
| SMTP Server | smtp.gmail.com SMTP server address supports English, numbers and @ _ . - | | |
| SMTP Port | 25 | 1 | |
| Transport Layer Security | STARTTLS G-Mail only supports TLS at Port 465 and STARTTLS at Port 587 or 25. Hotmail only supports STARTTLS at Port 587 or 25. | | |
| Need Authentication | Yes | | |
| SMTP Username | test123@gmail.com The maximum length of the user name is 63, support numbers, letters and symbols @ _ . \$ * - | | |
| SMTP Password | The maximum password length is 32, does not support the character & = | | |
| Sender E-mail | test123@gmail.com | 3 | Test 6 |
| First Receiver | test@163.com The maximum length of the receiver is 63, support numbers, letters and symbols @ _ . \$ * - | | |
| Second Receiver | tset@hotmail.com | | |
| Third Receiver | | | |
| Fourth Receiver | | | |

1---- **SMTP Server/ Port /Transport Layer Security** Enter SMTP server for sender. **SMTP** port is usually set as 25. Some SMTP servers have their own port, such as 587 or 465, and Transport Layer Security usually is None. If you use Gmail, Transport Layer Security must be set to TLS or STARTTLS and SMTP Port must be set to 465 or 25 or 587, which port you choose should be decided by which Transport Layer Security you select.

2---- **SMTP Username/ password** ID account and password of the sender email address

3---- **Sender E-mail** Mailbox for sender must support SMTP

4---- **Receiver** Mailbox for receiver need not support SMTP,you can set 4 receivers

5---- **Save** Click Save to take effect

6---- **Test** Click Test to see if Mail has been successfully configured.

Click **Test** to see if Mail has been successfully configured.

| <div>Save</div> <div>Refresh</div> | |
|--|---|
| Enable <input checked="" type="checkbox"/> | |
| SMTP Server | <input type="text" value="smtp.gmail.com"/> SMTP server address supports English, numbers and @ _ . - |
| SMTP Port | <input type="text" value="25"/> |
| Transport Layer Security | <input type="text" value="STARTTLS"/> G-Mail only supports TLS at Port 465 and STARTTLS at Port 587 or 25. Hotmail only supports STARTTLS at Port 587 or 25. |
| Need Authentication | <input type="text" value="Yes"/> |
| SMTP Username | <input type="text" value="test123@gmail.com"/> The maximum length of the user name is 63, support numbers, letters and symbols @ _ . \$ * - |
| SMTP Password | <input type="password" value="....."/> The maximum password length is 32, does not support the character & = |
| Sender E-mail | <input type="text" value="test123@gmail.com"/> <div>Test</div> <div>Success</div> Test result. |
| First Receiver | <input type="text" value="test@163.com"/> The maximum length of the receiver is 63, support numbers, letters and symbols @ _ . \$ * - |
| Second Receiver | <input type="text" value="tset@hotmail.com"/> |
| Third Receiver | <input type="text"/> |
| Fourth Receiver | <input type="text"/> |

If the test success, you can see the Success behind the Test, at the same time the receivers will receive a test mail.

If the test fails with one of the following errors after clicking **Test**, verify that the information you entered is correct and again select Test .

- 1) Cannot connect to the server
- 2) Network Error. Please try later
- 3) Server Error
- 4) Incorrect user or password
- 5) The sender is denied by the server. Maybe the server need to authenticate the user, please check it and try again
- 6) The receiver is denied by the server. Maybe because of the anti-spam privacy of the server
- 7) The message is denied by the server. Maybe because of the anti-spam privacy of the server
- 8) The server does not support the authentication mode used by the device

4.4.8 FTP Settings

If you want to upload record files and images to your FTP server, you can set **FTP Settings**.

| <div> <div>Save</div> <div>Refresh</div> </div> | |
|---|---|
| FTP Server | <input type="text" value="ftp://192.168.8.150"/> Example:ftp://192.168.1.103/dir The maximum length of the address is 127, does not support the character & = |
| Port | <input type="text" value="21"/> |
| FTP Mode | <input type="text" value="PORT"/> <div>▼</div> |
| Username | <input type="text" value="yaocuixiang"/> The maximum length of the user name is 63, support numbers, letters and symbols _ @ \$ * - , . # ! |
| Password | <input type="password" value="....."/> The maximum password length is 63, does not support the character & = |
| <div>Test</div> | <div>Success</div> |

Figure a

| <div> <div>Save</div> <div>Refresh</div> </div> | |
|---|--|
| FTP server | <input type="text" value="ftp://ftp.mgenseal.com"/> example:ftp://192.168.1.103 |
| Port | <input type="text" value="21"/> |
| FTP Mode | <input type="text" value="PORT"/> <div>▼</div> |
| User name | <input type="text" value="deotestge"/> |
| Password | <input type="password" value="....."/> |
| <div>Test</div> | <div>Success</div> |

Figure b

FTP server: If your FTP server is located on the LAN, you can set as Figure a.

If you have an FTP server which you can access on the internet, you can set as Figure b.

Port: Default is port 21. If changed, external FTP client program must change the server connection port accordingly.

FTP Mode: Here supports two modes: PORT and PASV.

Username/password: The FTP account and password.

Click **Save** to take effect.

Click **Test** to see if FTP has been successfully configured.

4.4.9 P2P

Access the IP Camera by Smart Phone (Android or iOS operating system)

First of all, you must open the P2P function of the IP Camera at “Settings --> Network --> P2P.”

| P2P | |
|---|-------------------------------------|
| <div> <div>Save</div> <div>Refresh</div> </div> | |
| UID | FLGTBW7YGBUV9NPMUR41 |
| Enable P2P | <input checked="" type="checkbox"/> |
| P2P Port | 29499 |

Foscam App named **Foscam** on App Store and Google Play for iOS and Android devices.

NOTE:

If the QR code scanning is not successful, please input the UID on the bottom of the camera manually.

4.4.10 Onvif

On this page, you can enable the Onvif port and RTSP port. ONVIF(Open Network Video Interface Forum) is a standard for talking to Network Camera Devices and other similar security hardware.

ONVIF port: By default, the ONVIF port is set to 888. Also, they can be assigned with another port number between 1 and 65535(except 0 and 65534). But make sure they can not be conflict with other existing ports.

RTSP port: The default port is 554.

| <div> <div>Save</div> <div>Refresh</div> </div> | |
|---|-------------------------------------|
| Enable | <input checked="" type="checkbox"/> |
| ONVIF Port | 888 |
| RTSP Port | 554 |



4.5 Video

This section allows you to configure Video stream settings, On screen display and Snapshot settings.

4.5.1 Video Settings

There are two ways to set the stream video settings. They are main stream video settings and sub stream video settings.

Video Settings

 Save
  Refresh

Main stream video settings

| | |
|--------------------|---------|
| Stream Type | HD Mode |
| Resolution | 720P |
| Bit Rate | 2M |
| Frame Rate | 23 |
| Key Frame Interval | 46 |
| Variable bitrate | Yes |

Sub stream video settings

| | |
|--------------------|---------------|
| Stream Type | HD Mode |
| Resolution | QVGA(320*180) |
| Bit Rate | 200K |
| Frame Rate | 15 |
| Key Frame Interval | 45 |

Stream Type: There are four types to identify different streams you have set. If select the HD Mode, the clearer video will become, and it will take up more bandwidth; If select the Smooth Mode, the bandwidth is very narrow, and bit rate is large, that will lead to video can not play well. The Equilibrium Model is a value between HD Mode and Smooth Mode.

Resolution: The camera supports multiple types, For example: 960P, 720P, VGA. The higher the resolution is the clearer video will become. But the code flux will become larger too, and it will take up more bandwidth. (The maximum frame rate for each model is different, please see the “Specifications” .)

Bit Rate: Generally speaking, the larger the bit rate is, the clearer video will become. But the bit rate configuration should combine well with the network bandwidth. When the bandwidth is very narrow, and bit rate is large, that will lead to video can not play well.

Frame rate: You should lower frame rate when the bandwidth is limited. Normally, when the frame rate above 15, you can achieve fluently video.

Key Frame Interval: The time between last key frame and next key frame. The shorter the duration, the more likely you will get a better video quality, but at the cost of higher network bandwidth consumption.

Rate Control Mode: There are three rate control modes.

CBR: Constant Bit Rate, it means that the Bit Rate is constant.


VBR: Variable Bit Rate, the camera will change the video bit rate according to the situation, but will not more than the maximum parameter "Bit Rate".

LBR: Low Bit Rate. If you can select the LBR, then you can slide the scroll bar to choose percentage of

the bit rate. By reducing the bit rate, so that the camera can obtain a better image at low bandwidth.

4.5.2 On Screen Display

This page is used to add timestamp and device name on the video.



| OSD | |
|-------------------------|-----|
| <div>Save Refresh</div> | |
| Display Timestamp | Yes |
| Display Camera Name | Yes |

Display Timestamp

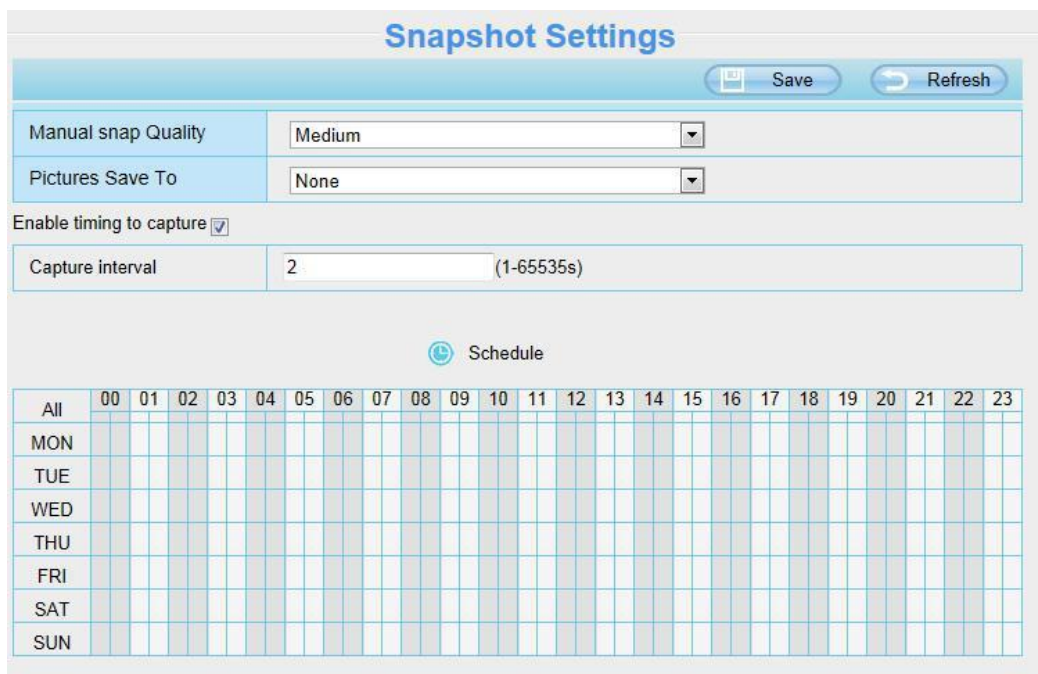
There are two options: Yes or NO. Select Yes and you can see the system date on the video.

Display Camera Name

There are two options: Yes or NO. Select Yes and you can see the device name on the video.

4.5.3 Snapshot Settings

On this page you can set the snapshot pictures' image quality and the storage path.



| Snapshot Settings | |
|--|---|
| <div>Save Refresh</div> | |
| Manual snap Quality | Medium |
| Pictures Save To | None |
| Enable timing to capture <input checked="" type="checkbox"/> | |
| Capture interval | 2 (1-65535s) |
| <div>Schedule</div> | |
| All | 00 01 02 03 04 05 06 07 08 09 10 11 12 13 14 15 16 17 18 19 20 21 22 23 |
| MON | |
| TUE | |
| WED | |
| THU | |
| FRI | |
| SAT | |
| SUN | |

Manual snap Quality: Low, Middle and High. The higher the quality, the picture will be clearer.

Pictures Save To: FTP or SD card. If you have done FTP and Alarm settings, when alarming, the camera will snap pictures to the FTP or SD card automatically.

Enable timing to capture

To enable capture interval, follow the steps below:

1 Select **Enable Motion detection**

2 **Capture interval:** The interval time between two captures.

3 Select the capture time

- Capture anytime

Click the black button up the MON, you will see all time range turn red. When something moving in the detection area at anytime, the camera will capture.

- Specify an capture schedule

Click the week day words, the corresponding column will be selected. For example, click TUE, the all column of TUE turns to red, that means during Tuesday whole day, the camera will capture.

- Press the left mouse and drag it on the time boxes, you can select the serial area,

4 Click **Save button** to take effect.

4.6 Detector

4.6.1 Motion Detection

IP Camera supports Motion Detection Alarm, when the people has been detected, the IP Camera will make a alarm.

Motion Detection

Save Refresh

Enable ☒

| | |
|-------------------------------|---|
| Sensitivity | Low |
| Triggered Interval | 15s |
| Action | Camera Sound <input type="checkbox"/> PC Sound <input type="checkbox"/> |
| | Send E-mail <input checked="" type="checkbox"/> |
| | Take Snapshot <input checked="" type="checkbox"/> Time Interval 2s |
| | Please set the capture storage location in advance.(Video -> Snapshot Settings) |
| | Recording <input checked="" type="checkbox"/> |
| | Please set the video storage location in advance.(Record -> Storage Location) |
| | Push message to the phone <input checked="" type="checkbox"/> |
| <div>Set Detection Area</div> | |

Schedule

| | | | | | | | | | | | | | | | | | | | | | | | | |
|-----|----|----|----|----|----|----|----|----|----|----|----|----|----|----|----|----|----|----|----|----|----|----|----|----|
| All | 00 | 01 | 02 | 03 | 04 | 05 | 06 | 07 | 08 | 09 | 10 | 11 | 12 | 13 | 14 | 15 | 16 | 17 | 18 | 19 | 20 | 21 | 22 | 23 |
| | | | | | | | | | | | | | | | | | | | | | | | | |

Step 1: Enable Action detection function.

Step 2: Sensitivity---- It supports five modes: Lowest, Lower, Low, Medium and High. The higher the

sensitivity, the camera will be more easily alarmed. Select one motion sensitivity.

Step 3: Trigger interval--- The interval time between two motion detection.

Step 4: There are some alarm indicators:

A Camera Sound and PC Sound

If the camera has connected with a speaker or other audio output device, if you select Camera Sound or PC Sound, when the motion has been detected, the people around the camera will hear beep alarm sound.

B Send E-mail

If you want to receive alarm emails when motion is detected, you must select Send E-mail and set Mail Settings first.

C Take Snapshot

If you select this checkbox, when the motion has been detected, the camera will snap the live view window as a still picture and load it to the FTP. Make sure you have set FTP and set FTP as the storage path in Video->Snapshot settings panel.

Time interval: The interval time between two pictures.

D Recording

If you select this checkbox, when the motion has been detected, the camera will record automatically and store the record files to the SD Card. Make sure the camera has inserted SD card and you have set the SD card as the Alarm record files storage path, please go to **Record—> Storage location** page to verify this settings.

The default alarm record time is 30s and pre-alarm record time is 5s, please go to **Record—> Alarm Record** page and change the alarm time settings.

E Push message to the phone

If you select this checkbox, when the motion has been detected, the camera will push the message to the phone which has been connected the camera.

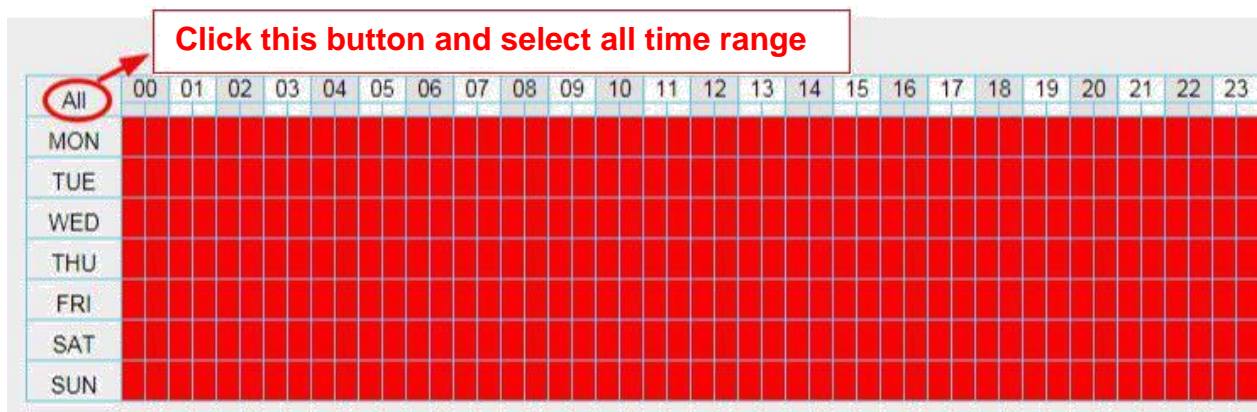
Step 7: Set detection area

Click set detect area and it pop up a window, then you can draw the detection area. Click **Back** button after settings. When something moving in the detection area, the camera will alarm.

Step 8: Alarm Schedule

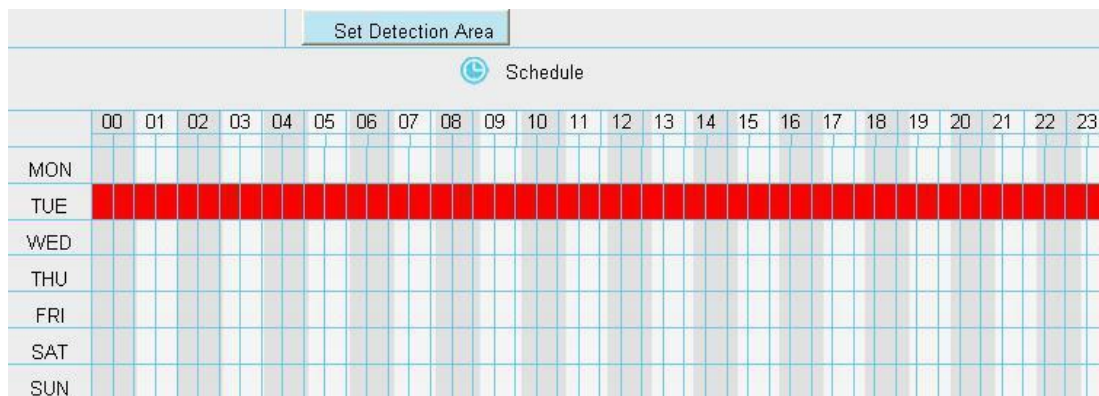
① Alarm anytime when motion is detected

Click the black button up the MON, you will see all time range turn red. When something moving in the detection area at anytime, the camera will alarm.

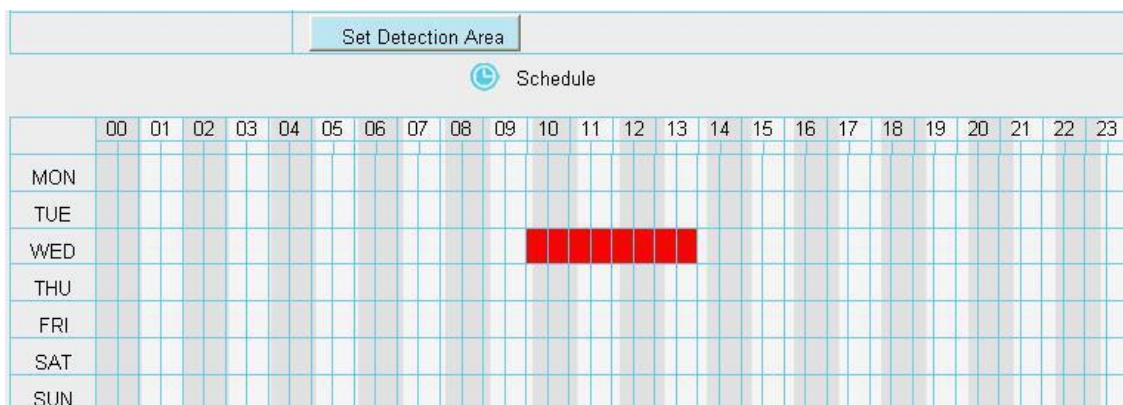


② Specify an alarm schedule

Click the week day words, the corresponding column will be selected. For example, click TUE, the all column of TUE turns to red, that means during Tuesday whole day, when something moving in the detection area, the camera will alarm.



③ Press the left mouse and drag it on the time boxes, you can select the serial area.



Step 9: Click Save button to take effect.



When the motion has been detected during the detection time in the detection area, the camera will alarm and adopt the corresponding alarm indicators.

NOTE: You must set the detection area and detection schedule, or else there is no alarm anywhere and anytime.

4.6.2 Sound Detection


When the ambient sound over a certain decibel ,the sound alarm will be triggered.

Sound Detection

 Save  Refresh

Enable ☒

| | | |
|---|---|--|
| Sensitivity | Low | |
| Triggered Interval | 15s | |
| Action | Camera Sound <input type="checkbox"/> PC Sound <input type="checkbox"/> | |
| | Send E-mail <input checked="" type="checkbox"/> | |
| | Take Snapshot <input checked="" type="checkbox"/> Time Interval 2s | |
| | Please set the capture storage location in advance.(Video -> Snapshot Settings) | |
| | Recording <input checked="" type="checkbox"/> | |
| | Please set the video storage location in advance.(Record -> Storage Location) | |
| Push message to the phone <input checked="" type="checkbox"/> | | |

 Schedule

| | | | | | | | | | | | | | | | | | | | | | | | | |
|-----|----|----|----|----|----|----|----|----|----|----|----|----|----|----|----|----|----|----|----|----|----|----|----|----|
| All | 00 | 01 | 02 | 03 | 04 | 05 | 06 | 07 | 08 | 09 | 10 | 11 | 12 | 13 | 14 | 15 | 16 | 17 | 18 | 19 | 20 | 21 | 22 | 23 |
| MON | | | | | | | | | | | | | | | | | | | | | | | | |
| TUE | | | | | | | | | | | | | | | | | | | | | | | | |

If the Sensitivity is set to “High”, the camera will detect the sound whose more than 55db.
If the Sensitivity is set to “Medium”, the camera will detect the sound whose more than 65db.
If the Sensitivity is set to “Low”, the camera will detect the sound whose more than 75db.
If the Sensitivity is set to “Lower”, the camera will detect the sound whose more than 85db.
If the Sensitivity is set to “Lowest”, the camera will detect the sound whose more than 95db.


4.7 Record


This section will allow you to change the record files storage path and the record time.

4.7.1 Storage Location

On this page you can change the alarm and manually recording storage path.

Storage Location

 Save
  Refresh

| | | |
|--------------------------|--|---|
| Recording Location | None  | |
| Local Recording Location | c:\IPCamRecord | <input type="button" value="Browse"/> <input type="button" value="Enter the local folder"/> |

Recording Location is used for alarm recordings and schedule recordings.

The local recording must be stored in local storage. The default Windows storage location is "c:\IPCamRecord". The default Mac OS storage location is "/IPCamRecord". If you modify the path on other cameras, this default storage location will be modified accordingly.

Recording Location : SD card or FTP. **Make sure the SD card has been inserted into the camera.** On this page, you can see the available space of the SD card.

Local Recording Location: For Windows OS, the manual recording path is C:/ IPCamRecord, you can change another one. For MAC OS, the manual recording path is: / IPCamRecord.

Enter the local folder: Click here, You can enter the local storage folder.

4.7.2 Alarm Recording

Alarm Recording

 Save
  Refresh



Enable Pre-Record ☒

| | |
|----------------------|---|
| Pre-recorded Time | 2s  |
| Alarm Recording Time | 30s  |


4.7.3 Local Alarm Recording

This page you can enable the local alarm record and Local Alarm record time.

Local Alarm Recording

 Save
  Refresh

Enable Local Alarm Recording ☒

| | |
|----------------------------|---|
| Local Alarm Recording Time | 30s  |
|----------------------------|---|

4.7.4 Schedule Recording

When the video is selected as FTP, the device supports scheduled recording.

When the parameter **Recording Location** is set **SD Card** on the **Storage Location** page, you can configure parameters as shown in follow figure.

Storage Location

Recording Location:

Local Recording Location:

Recording Location is used for alarm recordings and schedule recordings.

The local recording must be stored in local storage. The default Windows storage location is "c:\IPCamRecord". The default Mac OS storage location is "/IPCamRecord". If you modify the path on other cameras, this default storage location will be modified accordingly.

Scheduled Recording To FTP

Enable Scheduled Recording ☒

Stream:

| | 00 | 01 | 02 | 03 | 04 | 05 | 06 | 07 | 08 | 09 | 10 | 11 | 12 | 13 | 14 | 15 | 16 | 17 | 18 | 19 | 20 | 21 | 22 | 23 |
|-----|----|----|----|----|----|----|----|----|----|----|----|----|----|----|----|----|----|----|----|----|----|----|----|----|
| All | | | | | | | | | | | | | | | | | | | | | | | | |
| MON | | | | | | | | | | | | | | | | | | | | | | | | |
| TUE | | | | | | | | | | | | | | | | | | | | | | | | |
| WED | | | | | | | | | | | | | | | | | | | | | | | | |
| THU | | | | | | | | | | | | | | | | | | | | | | | | |
| FRI | | | | | | | | | | | | | | | | | | | | | | | | |
| SAT | | | | | | | | | | | | | | | | | | | | | | | | |
| SUN | | | | | | | | | | | | | | | | | | | | | | | | |

Scheduled recording only supports SD card or FTP server.

Scheduled recording will stop while alarm recording begins, and go on automatically after it ends.

When the video is selected as SD card, the device supports pumping frame recording.

When the parameter **Recording Location** is set **SD Card** on the **Storage Location** page, you can configure parameters as shown in follow figure.

Setup Wizard
Status
Basic Settings
Network
Video
Detector
Record
Storage Location
Alarm Recording
Local Alarm Recording
Scheduled Recording

Storage Location

Save Refresh

| | | |
|--------------------------|----------------|-------------------------------|
| Recording Location | SD card | 788.3 MB / 7.4 GB |
| Local Recording Location | c:\IPCamRecord | Browse Enter the local folder |

Recording Location is used for alarm recordings and schedule recordings.

The local recording must be stored in local storage. The default Windows storage location is "c:\IPCamRecord". The default Mac OS storage location is "/IPCamRecord". If you modify the path on other cameras, this default storage location will be modified accordingly.

Scheduled Recording To SD Card

Save Refresh

Enable Scheduled Recording ☒

Enable Long-time recording No

| | |
|----------------------|-------------|
| Frame Rate | 4 |
| Record full strategy | Cover |
| Audio Record | No |
| Stream | Main stream |

Edit Scheduled Recording

| All | 00 | 01 | 02 | 03 | 04 | 05 | 06 | 07 | 08 | 09 | 10 | 11 | 12 | 13 | 14 | 15 | 16 | 17 | 18 | 19 | 20 | 21 | 22 | 23 |
|-----|----|----|----|----|----|----|----|----|----|----|----|----|----|----|----|----|----|----|----|----|----|----|----|----|
| MON | | | | | | | | | | | | | | | | | | | | | | | | |
| TUE | | | | | | | | | | | | | | | | | | | | | | | | |
| WED | | | | | | | | | | | | | | | | | | | | | | | | |
| THU | | | | | | | | | | | | | | | | | | | | | | | | |
| FRI | | | | | | | | | | | | | | | | | | | | | | | | |
| SAT | | | | | | | | | | | | | | | | | | | | | | | | |

Record full strategy: When the SD card is full, you can choose to cover the previous recording, or stop recording.

Audio Record: You can choose "yes" or "no".

NOTES:

- Scheduled recording only supports video saved to the SD card or FTP server.
- The schedule recording will stop while alarm recording is beginning, and it will continue automatically after alarm recording end.
- You can refer to "alarm schedule." in "Alarm" about editing the time of recording Schedule.

4.7.5 SD Card Management

This camera supports SD Card. When you plug in the SD card during the camera work process, please reboot the camera again, or else the SD Card may be cannot work well.

SD Card Management

Refresh

| | | |
|---------------------|---------|--------------------|
| SD Card Status | SD card | SD Card Management |
| SD Card Free Space | 1.1GB | |
| SD Card Total Space | 7.4GB | |

Note: SD card management is only effective when access the IPC in LAN

The default storage path of alarm record files is SD card, when the available size of SD card is less than 256M, the old record files will be deleted automatically.

SD Card Management: After click the button, you should enter the username and password of the camera. Then you can manage the recording files of the camera in the SD card. The SD card management is only effective when access the camera in LAN.

4.8 Firewall

This section explains how to control the access permission by checking the client PC's IP addresses. It is composed of the following columns: **Block access from these IP addresses** and **Only allow access from these IP addresses**.

Enable Firewall ☒

| | |
|---------------|--|
| IP Filtering | <div style="border: 1px solid #ccc; padding: 2px;"> Block access from these IP addresses </div> <div style="border: 1px solid #ccc; padding: 2px; background-color: #e0e0e0;"> Block access from these IP addresses </div> <div style="border: 1px solid #ccc; padding: 2px; background-color: #e0e0e0;"> Only allow access from these IP addresses </div> |
| IP Address #1 | <input style="width: 100%;" type="text"/> |
| IP Address #2 | <input style="width: 100%;" type="text"/> |
| IP Address #3 | <input style="width: 100%;" type="text"/> |
| IP Address #4 | <input style="width: 100%;" type="text"/> |
| IP Address #5 | <input style="width: 100%;" type="text"/> |
| IP Address #6 | <input style="width: 100%;" type="text"/> |
| IP Address #7 | <input style="width: 100%;" type="text"/> |
| IP Address #8 | <input style="width: 100%;" type="text"/> |

Enable firewall, If you select Only allow access from these IP addresses and fill in 8 IP addresses at most, only those clients whose IP addresses listed in the **Only allow access from these IP addresses** can access the Network Camera. If you select **Block access from these IP addresses**, only those clients whose IP addresses are in the IP list cannot access the Network Camera. Click **Save** to take effect.

4.9 System

In this panel, you can backup/restore your camera settings, upgrade the firmware to the latest version, restore the camera to default settings and reboot the device.

4.9.1 Back-up& Restore

Click **Backup** to save all the parameters you have set. These parameters will be stored in a bin file for future use.

Click Browse and select the parameters file you have stored, then click Submit to restore the restore the parameters.

Backup is used to save your current settings. It is recommended to backup your configuration before modifying or upgrading firmware.

Backup

Settings can be restored by uploading the backup file.

Path:

Browse...

Submit

Note:

1. All current settings will be lost when importing a configuration file. If an incorrect file is loaded, the camera may stop working correctly.
2. Keep the power on during this process, or you may damage your camera. Your camera will reboot automatically once restoration is completed.

4.9.2 System Upgrade

Click "Download the latest firmware", you will see the following screen. And click "save" to save the firmware on your computer locally.

Your current firmware version will be displayed on your screen. You may go to the **Status → Device Information** page to check for the latest firmware versions available. Click **Browse**, choose the correct bin file and then click **System upgrade**.

Don't shut down the power during upgrade. After upgrading, you can see the upgrade result.

System Upgrade

| | |
|-------------------------------------|--|
| Download the latest firmware | Current Firmware Version: 2.52.1.29 |
| <input type="text"/> | <input type="button" value="Browse..."/> <input type="button" value="System Upgrade"/> |
| Result <input type="text"/> | 1 2 |

Your camera will reboot during the firmware upgrade.

Upgrade Firmware by Equipment Search Tool

Double click the Equipment Search Tool shot icon  , select the Camera IP that you want to upgrade the firmware. Then select Upgrade Firmware and enter the username and password, choose the firmware file, and upgrade.

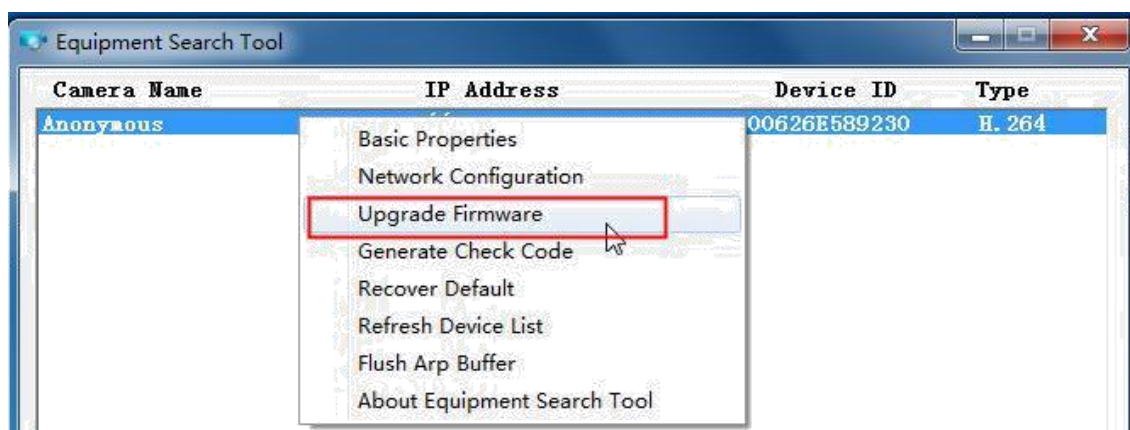
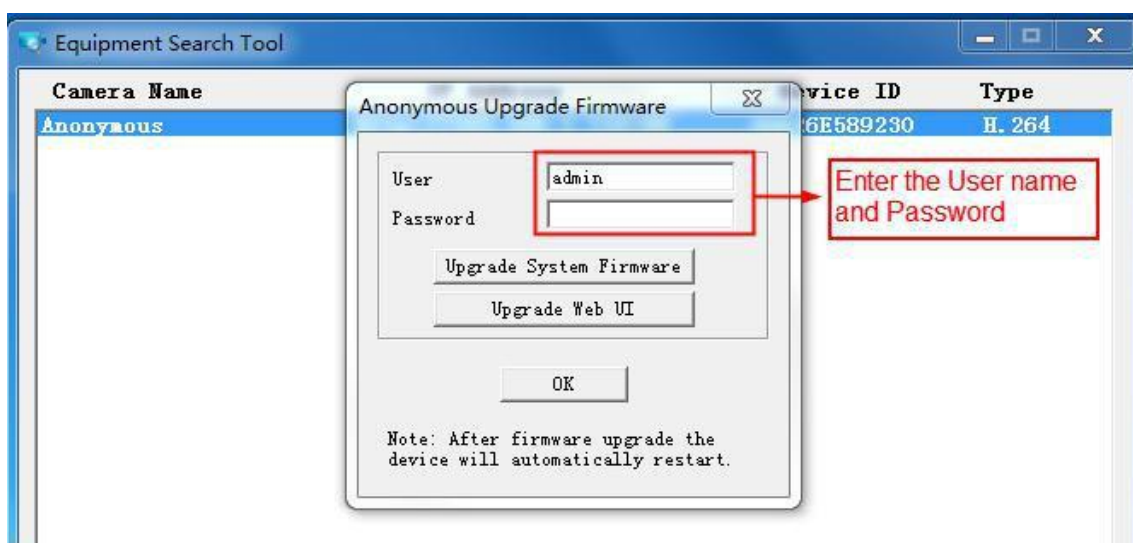


Figure 4.1



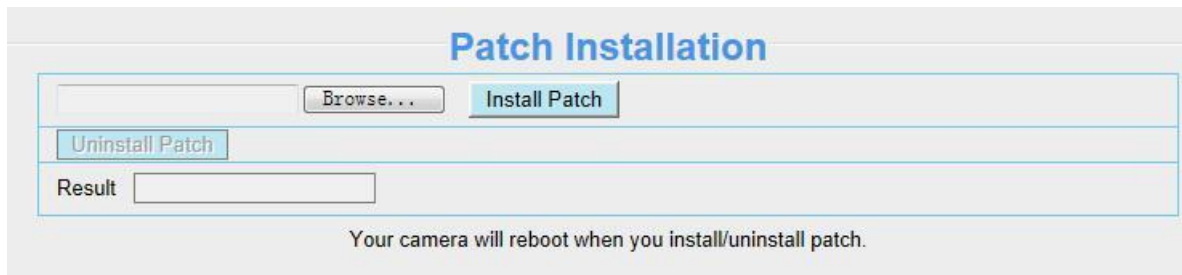
CAUTION: If your camera works well with the current firmware, we recommend not upgrading. Please don't upgrade the firmware unnecessarily. Your camera may be damaged if misconfigured during an upgrade.

NOTES:

- Please ensure you have download the correct firmware package for your camera before upgrading. Read the upgrade documentation (readme.txt file) in the upgrade package before you upgrade.
- Upon downloading the firmware check the sizes of the .bin files. They must match the size in the readme.txt file. If not, please download the firmware again until the sizes are the same. Your camera will not function correctly if a corrupt .bin file is used.
- Normally, only Device WEB UI need to be upgrade, please do not try to upgrade the Device System Firmware.
- Never shut down the power of the camera during upgrade until the IP camera restart and get connected.
- After upgrade successfully, please uninstall the old plugin and re-install it, then reset the camera to the default factory settings before using the camera.

4.9.3 Patch Installation

Click "Browse" to select the correct patch file, and then click "Install Patch" to install the patch. Do not turn off the power during it installing. After installing is complete, you will receive a system prompt.



The interface is titled "Patch Installation" in blue. It contains a text input field followed by a "Browse..." button and an "Install Patch" button. Below these is an "Uninstall Patch" button. A "Result" label is followed by an empty text box. At the bottom, a message states: "Your camera will reboot when you install/uninstall patch."

4.9.4 Factory Reset

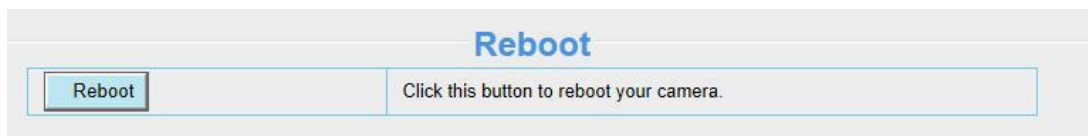
Click All reset and all parameters will return to factory settings if selected. This is similar to press the Reset button on the bottom of the camera.



The interface is titled "Factory Reset" in blue. It features a "Factory Reset" button on the left and a text box on the right containing the instruction: "Click this button to reset the camera to factory default."

4.9.5 Reboot

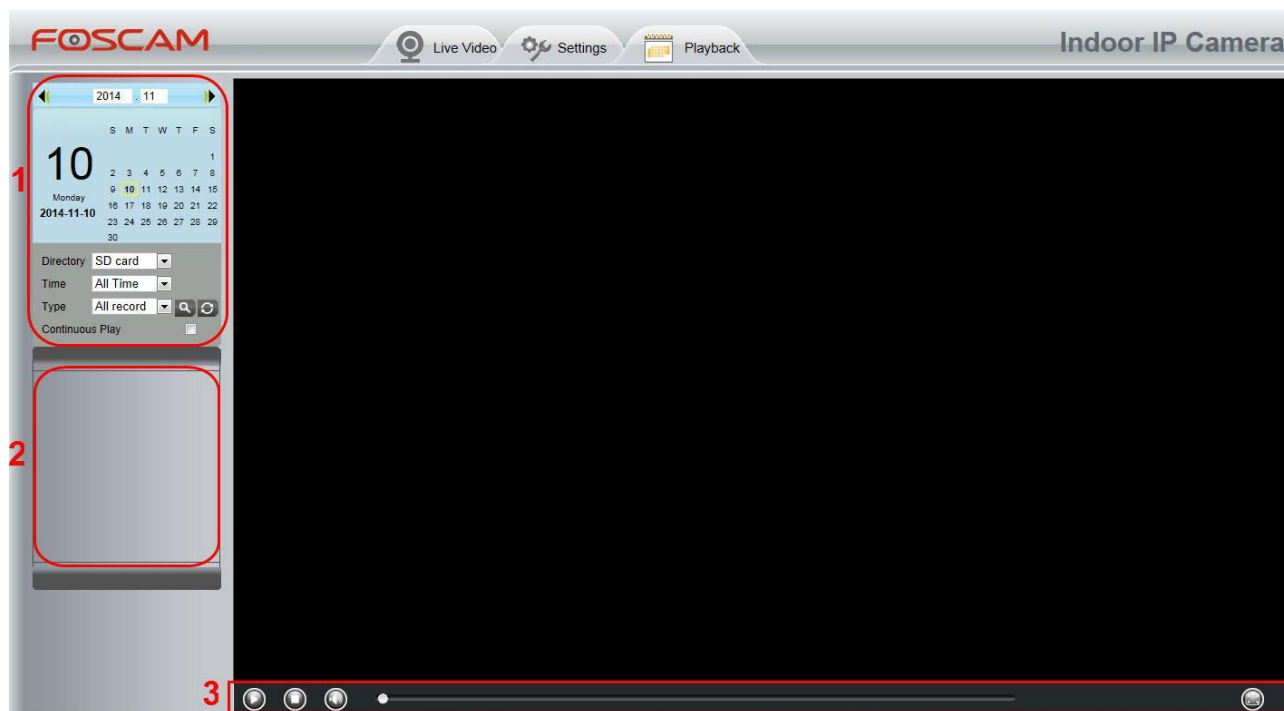
Click Reboot System to reboot the camera. This is similar to unplugging the power to the camera.



The interface is titled "Reboot" in blue. It contains a "Reboot" button on the left and a text box on the right with the instruction: "Click this button to reboot your camera."

5 Playback

On this page you can view the record files stored in the SD card.



Section 1 Define the Record files time and Type

Directory : The storage path of record files

Time : Here supports three types: current day, current month and All records. Another way, select the time on the time&date manually.



Type : The type of records files, Here supports two types: Normal record, Alarm record and All records.



: Click this button to search all record files satisfy the conditions you selected.

Continuous Play: Select the checkbox to play continuously all the record files.

Section 2 Search record files

On this panel you can see all record files satisfy the conditions you set.

Section 3 Play/Stop/Audio/Full screen buttons

Please select one record file before use these buttons.



Click this button to play the record files



Click this button to stop the record files



Open or stop audio

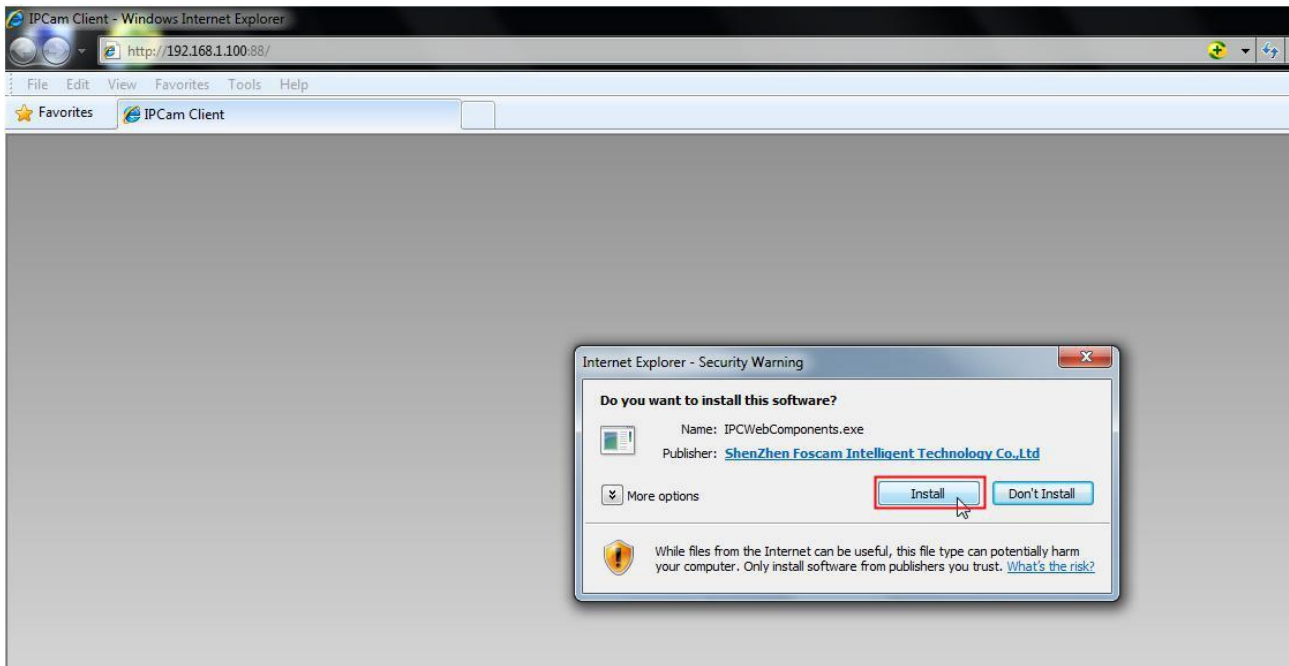


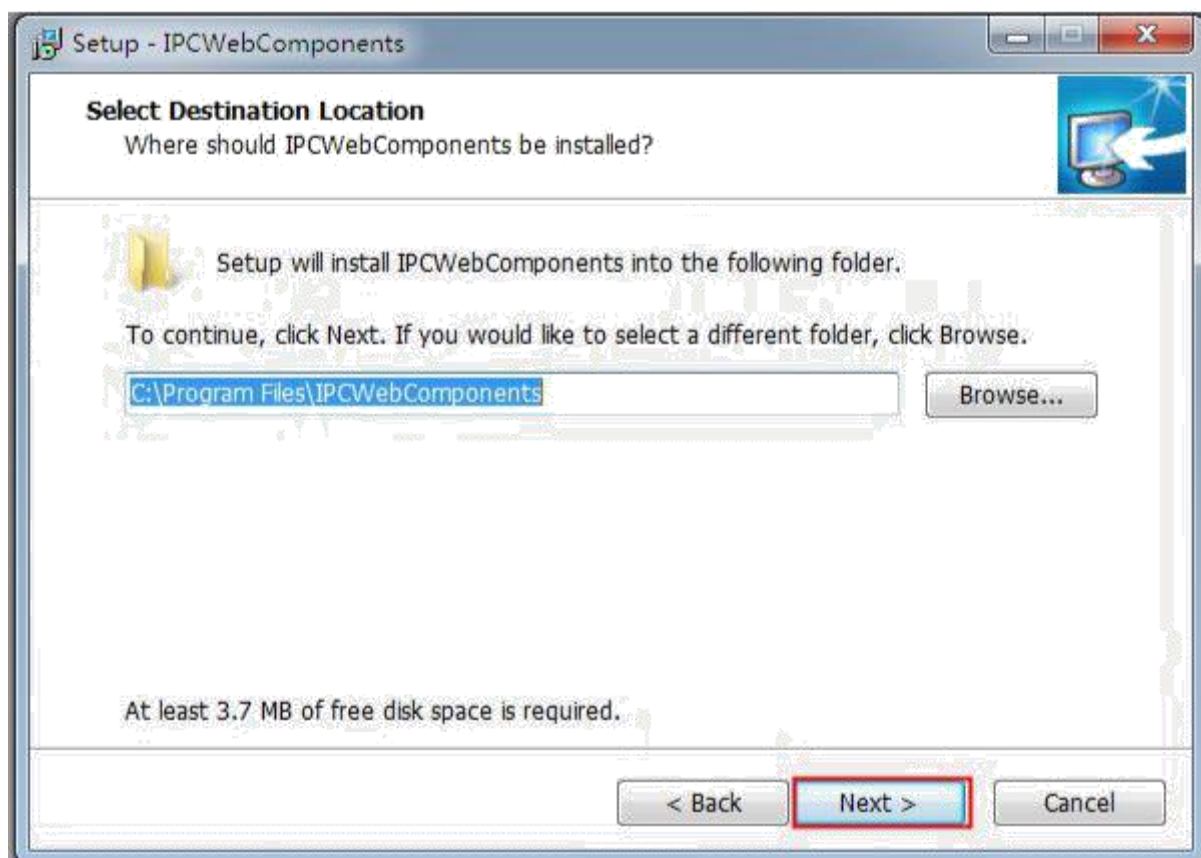
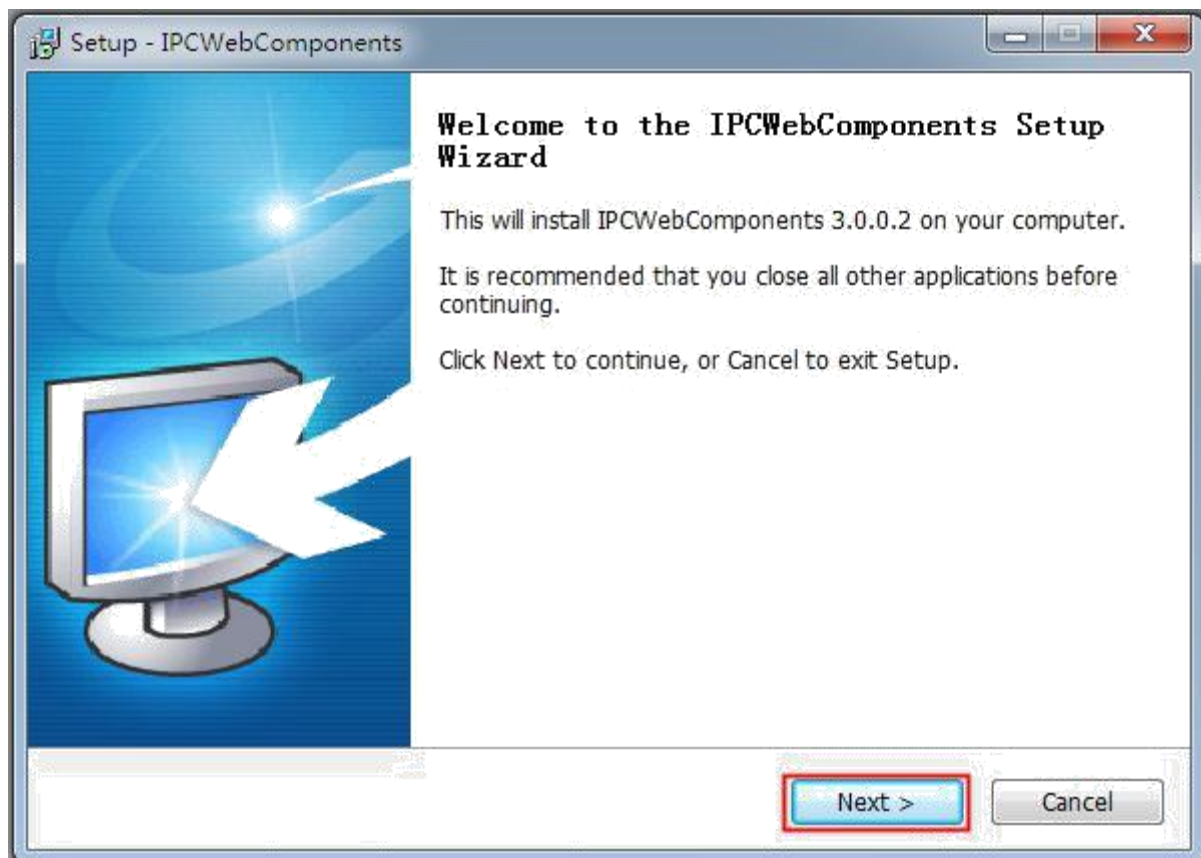
Click this button to make full screen, and double click left mouse to exit full screen.

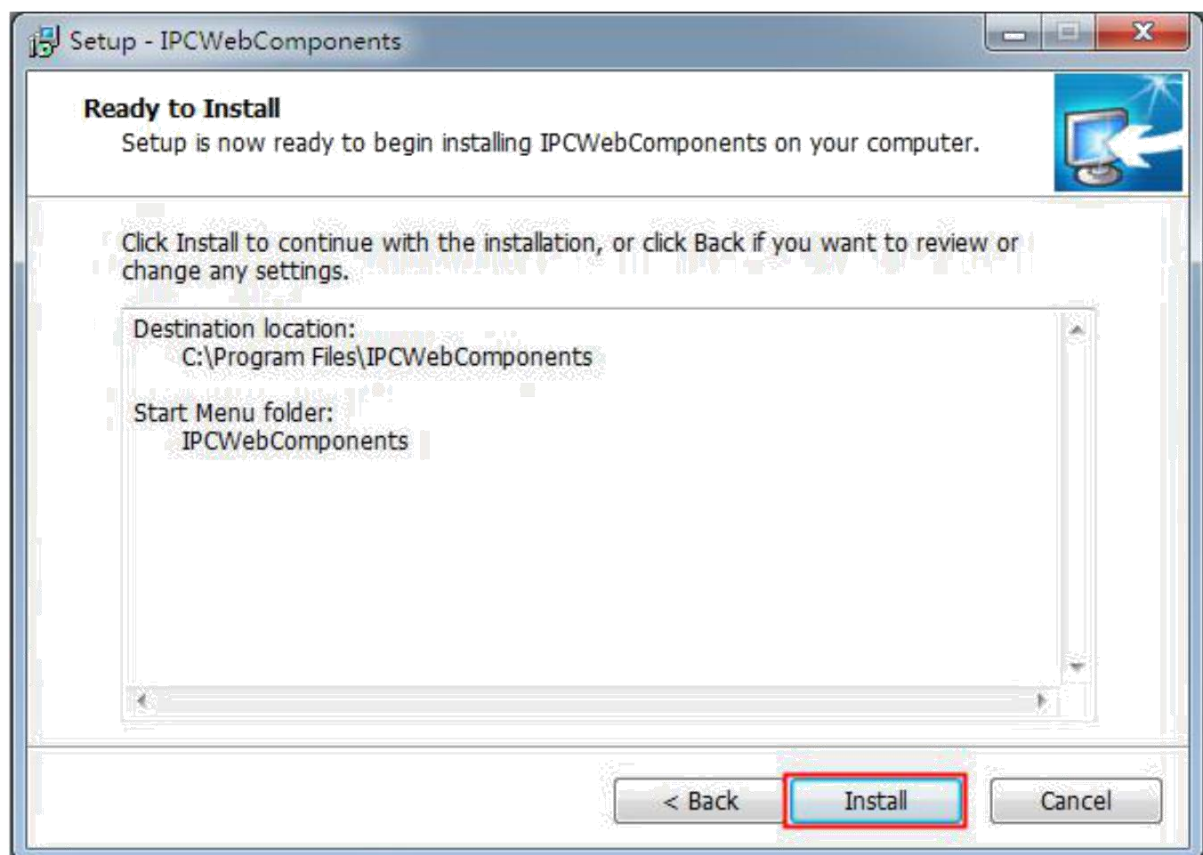
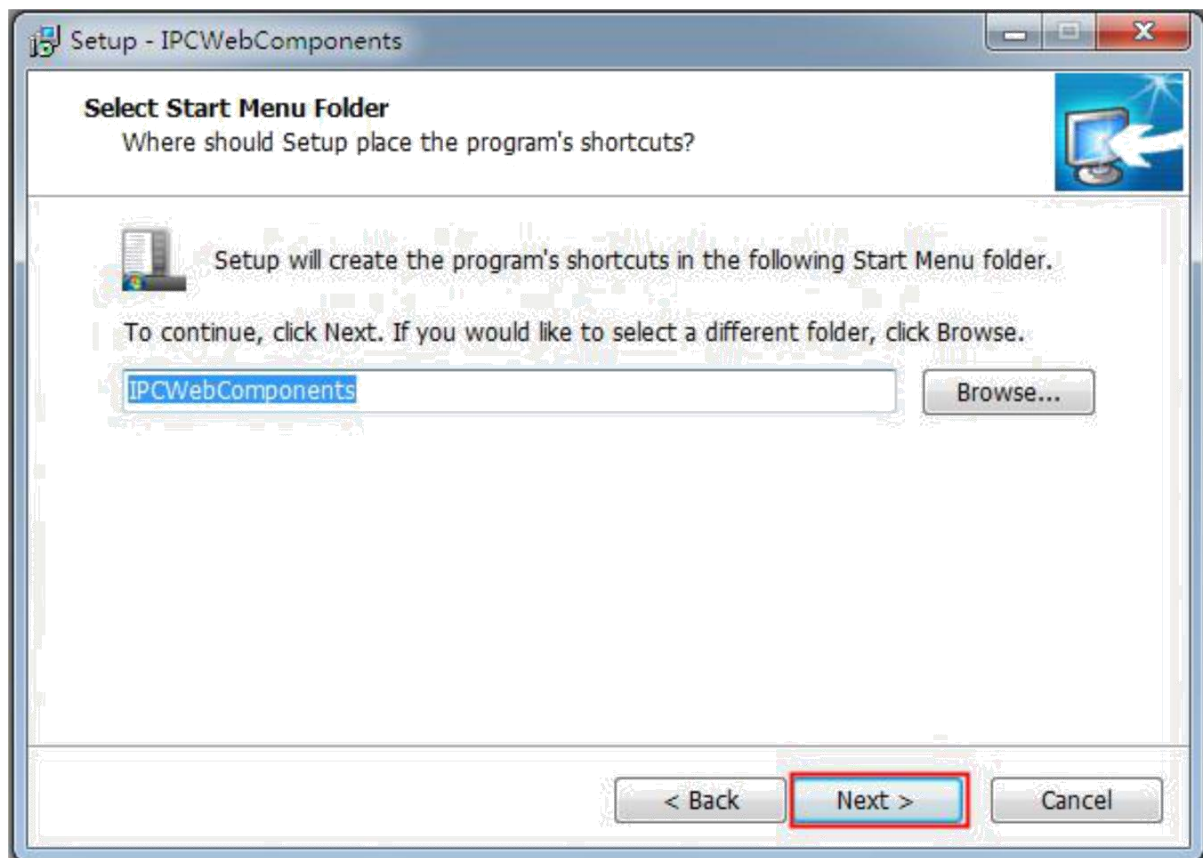
6 Appendix

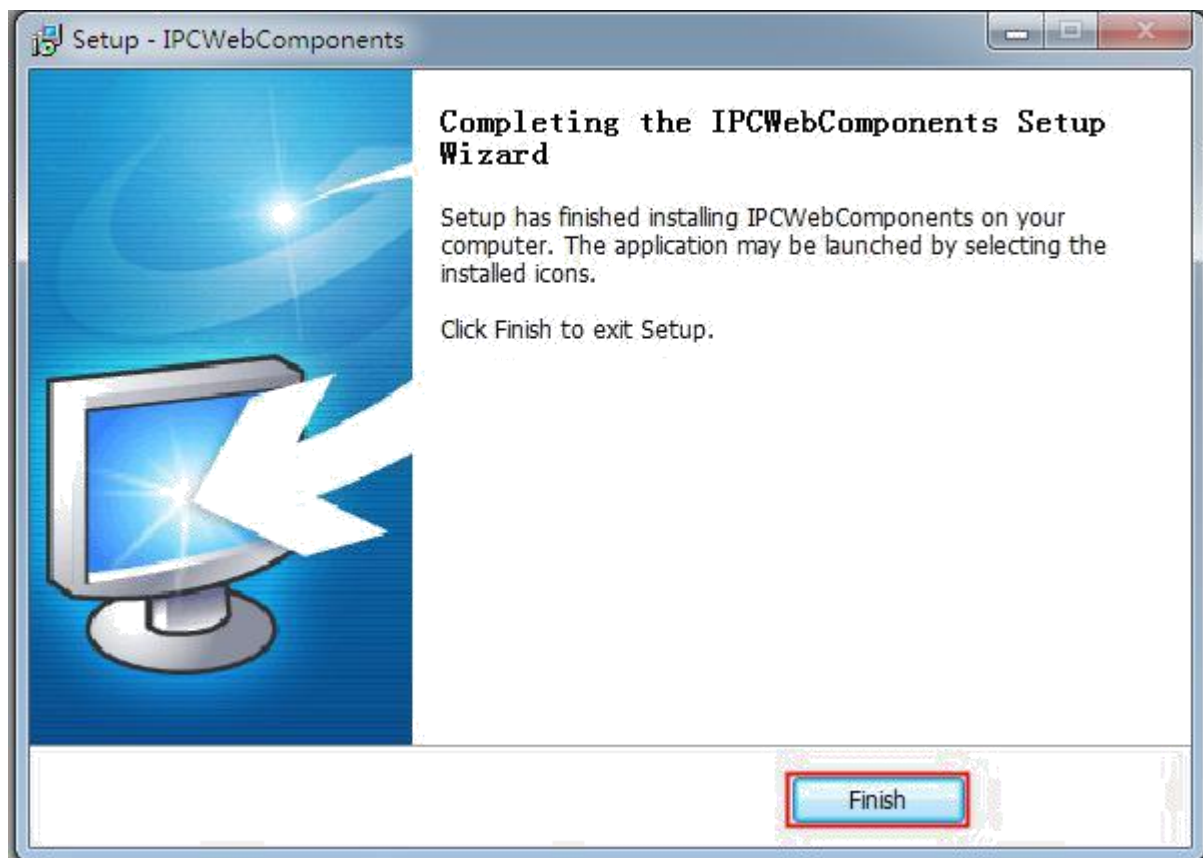
6.1 Frequently Asked Questions

6.1.1 Install the add-on of Firefox browser, Google Chrome and IE Chrome.

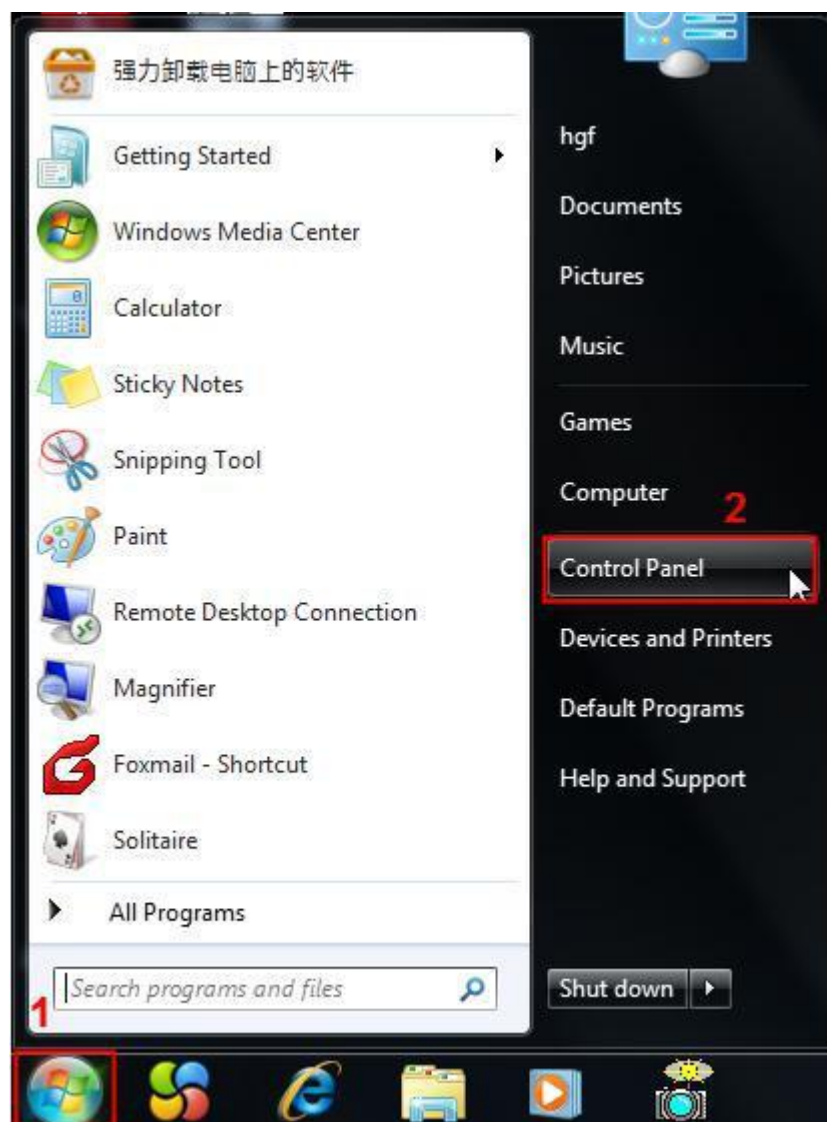


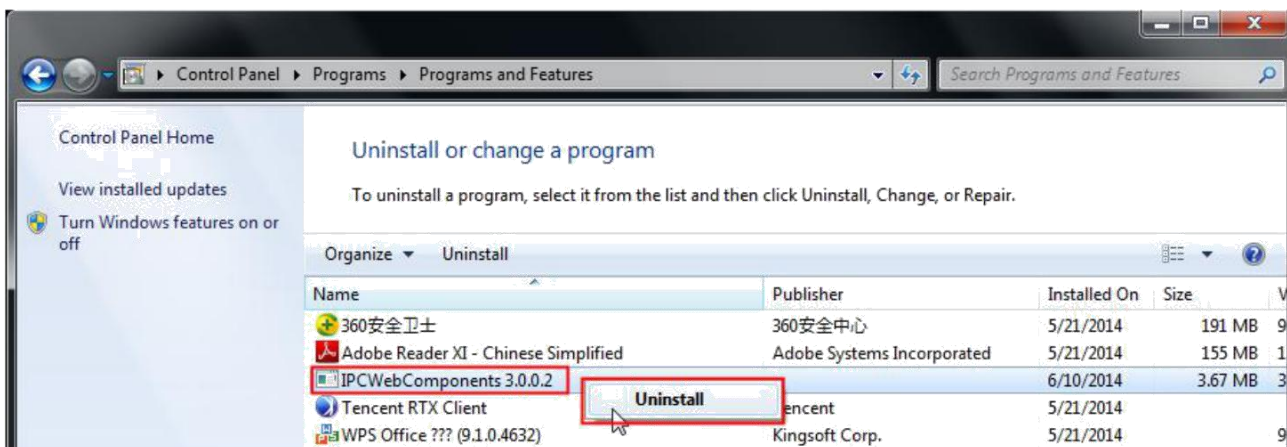
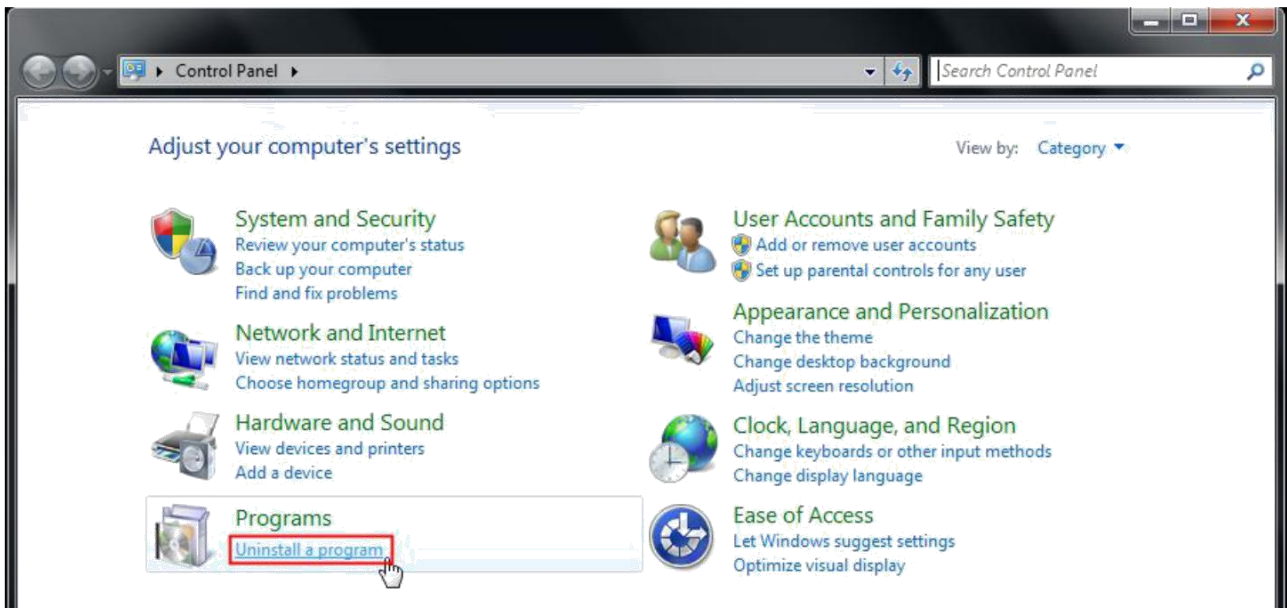






6.1.2 Uninstall the add-on of Firefox browser, Google Chrome and IE Chrome.





6.1.3 I have forgotten the administrator password

To reset the administrator username and password, press and hold down the RESET BUTTON for 5 seconds. Upon releasing the reset button, wait for 20 seconds, the camera will reboot and the username and password will return to the factory default administrator username and password. Please power on the camera before reset

Default administrator username: admin

Default administrator password: No password

6.1.4 Camera can not record

When you use Windows7 or Vista, you may be not able to do manually record or change the record path because of the security settings of computer.

There are two ways to resolve this problem:

Please add the camera as a trusted site to resolve this issue. The steps are :

IE browser→Tool→Internet Properties→Security→Trusted sites→Sites→Add

Open IE browser, then right click, select "Run as administrator"

6.1.5 Subnet doesn't match

Check whether your ipcamera in the same subnet of your computer. The step is **Control Panel→Network Connections→Dbclick Local Area Connections → Choose General→Properties**. Check subnet mask, IP address and gateways. When you set IP address please make sure they are in the same subnet. Otherwise you can't access camera.

6.1.6 No Pictures Problems

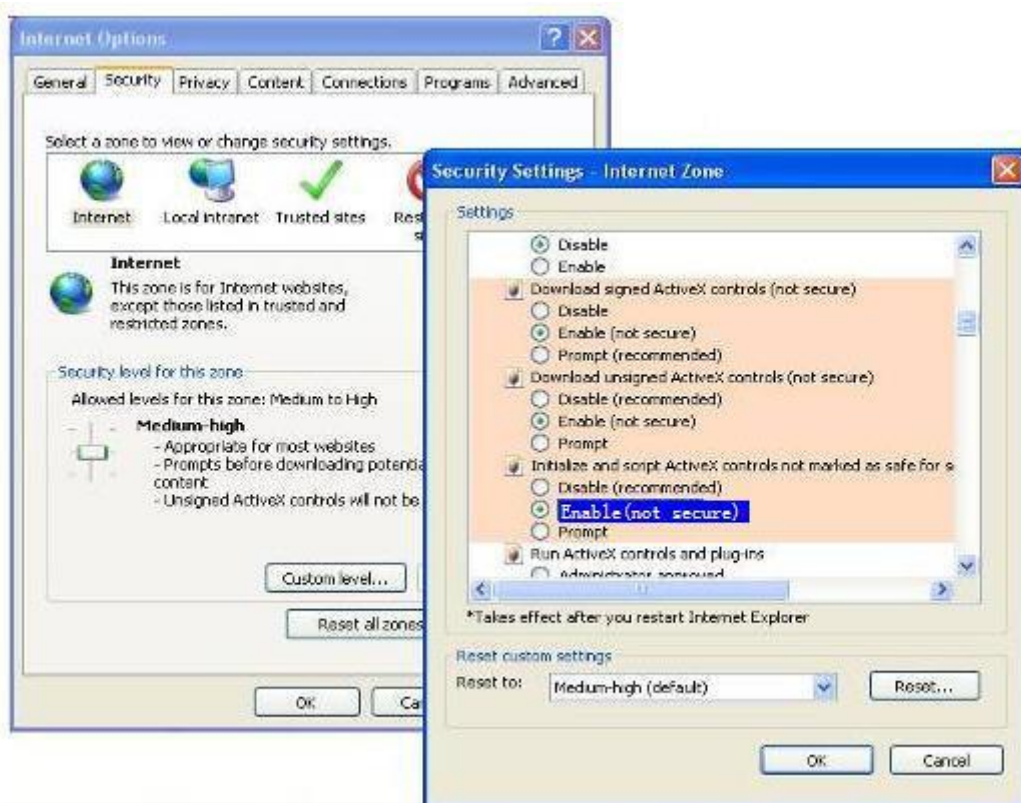
The video streaming is transmitted by the ActiveX controller. If ActiveX controller isn't installed correctly you will see no video image. You can resolve this problem by this way:

Download ActiveX controller and set the safety property of IE in the PC when you view it first time: IE browser→Tool→Internet Proper→Security→Custom Level→ActiveX control and Plug-ins. Three options of front should be set to be "Enable", The ActiveX programs read by the computer will be stored. As follows:

Enable: Download unsigned ActiveX controls

Enable: Initialize and script ActiveX controls not marked as safe

Enable: Run ActiveX controls and plug-ins



If you allow the ActiveX running, but still could not see living video. Please change another port number to try. Don't use port 88.

| Port | |
|------------|-----|
| HTTP Port | 88 |
| HTTPS Port | 443 |
| ONVIF Port | 888 |
| RTSP port | 554 |

NOTE: Make sure that your firewall or anti-virus software does not block the camera or ActiveX. If you could not see video, please shut down firewall or anti-virus software to try again.

6.1.7 Can't access IP camera in internet

There are some reasons:

- 1、ActiveX controller is not installed correctly
- 2、The port which camera used is blocked by Firewall or Anti-virus software. Please change another port number and try again.
- 3、Port forwarding is not successful

Check these settings and make sure they are correct.

6.1.8 UPnP always failed

UPnP only contains port forwarding in our recent software. Sometimes, it may be failed to do port forwarding automatically because of firewall or anti-virus software. It also has much relation with router's security settings. So we recommend you do port forwarding manually. You can view your camera in internet successfully after you do port forwarding manually in your router.

6.1.9 Camera can not connect wireless

If your camera could not connect wireless after you set wireless settings and plug out the cable. Please check whether your settings are correct or not.

Normally, camera can't connect wireless mainly because of wrong settings.

Make sure broadcast your SSID; use the same encryption for router and camera.

6.1.10 Can't see other cameras listed in multi-device when using remote access

If you want to view all the cameras via the WAN, verify that each camera added in the multi-device settings can be accessed by using the DDNS name and port number. Use the DDNS domain name not the camera's LAN IP. (For more details see: How to add cameras in WAN)

6.2 Default Parameters

Default network Parameters

IP address: obtain dynamically

Subnet mask: obtain dynamically

Gateway: obtain dynamically

DDNS: Embedded FOSCAM domain name

Username and password

Default admin username: admin with a blank password

6.3 Specifications

| ITEMS | | C1 Lite |
|---------------------|--------------------|---|
| Image Sensor | Sensor | High Definition Color CMOS Sensor |
| | Display Resolution | 1280 x 720 (1.0M Pixels) |
| | Min. Illumination | N/A (Without IR Illuminator) |
| Lens | Lens Type | Glass Lens |
| | focal length | f:2.8mm |
| | Aperture | F 2.4 |
| | Angle of view | Horizontal:100°,Diagonal :115° |
| Video | Image Compression | H.264 |
| | Image Frame Rate | 23fps, downward adjustable |
| | Resolution | 720P(1280 x 720), VGA(640 x 480), QVGA(320 x 240) |
| | Stream | dual stream |
| | Image adjustment | The hue, brightness, contrast, saturation, sharpness are adjustable |
| | Flip image | flip and mirror |
| | Infrared mode | N/A (Without IR Illuminator) |
| | Night visibility | N/A |
| Audio | Input/Output | External RCA interface for two-way audio |
| | Audio Compression | PCM/ G.726 |
| Network | Ethernet | N/A |
| | Wireless Standard | IEEE802.11b/g/n |
| | Data Rate | IEEE802.11b: 11Mbps(Max.); IEEE802.11g: 54Mbps(Max.); IEEE802.11n: 150Mbps(Max.). |
| | Wireless Security | WEP, WPA, WPA2 |
| | Remote Access | P2P、DDNS |
| | Network Protocol | IP、TCP、UDP、HTTP、HTTPS、SMTP、FTP、DHCP、DDNS、UPnP、RTSP、ONVIF |
| System Requirements | Operating System | Microsoft Windows 2000/XP, Vista, 7,8; Mac OS |
| | Browser | Microsoft IE8 and above version or compatible browser; Mozilla Firefox; Google Chrome; Apple Safari. |

| | | |
|-----------------------|--------------------------|--|
| Other Features | Motion Detection | Alarm via E-Mail, upload alarm snapshot to FTP |
| | Privacy Block | Set privacy area manually |
| | User Accounts | Three levels user role |
| | Firewall | Supports IP Filtering |
| | Reset | Reset button is available |
| Power | Power Supply | DC 5V/1.0A |
| | Power Consumption | 3 Watts (Max.) |
| Physical | Dimension(LxWxH) | 70(L)x70 (W)x120 (H) |
| | Net Weight | 90g |
| Environment | Waterproof | N/A |
| | Operating Temperature | -10°C~ 60°C (14°F ~ 122°F) |
| | Operating Humidity | 20% ~ 85% non-condensing |
| | Storage Temperature | -20°C ~ 60°C (-4°F ~ 140°F) |
| | Storage Humidity | 0% ~ 90% non-condensing |
| Certification | CE, FCC, IC, WEEE, CCPSA | |

Attention: Power adapter should be used between 0°C-40°C, and 5%-90% relative humidity.

6.4 CE & FCC

Electromagnetic Compatibility (EMC)

FCC Statement



This device complies with FCC Rules Part 15. Operation is subject to the following two conditions.

- This device may not cause harmful interference
- This device must accept any interference received, including interference that may cause undesired operation.

This equipment has been tested and found to comply with the limits for a Class B digital device, pursuant to Part 15 of the FCC Rules. These limits are designed to provide reasonable protection against harmful interference when the equipment is operated in a commercial environment. This equipment generates, uses, and can radiate radio frequency energy and, if not installed and used in accordance with the installation manual, may cause harmful interference to radio communications. Operation of this equipment in a residential area is like to cause harmful interference, in which case the user will be required to correct the interference at his own expense.

FCC Caution

Any changes or modification not expressly approved by the party responsible for compliance could void the user's authority to operate this equipment.

This equipment complies with FCC radiation exposure limits set forth for an uncontrolled environment.

This equipment should be installed and operated with minimum distance 20cm between the radiator& your body.

This transmitter must not be co-located or operating in conjunction with any other antenna or transmitter.

CE Mark Warning



This is a Class B product. In a domestic environment, this product may cause radio interference, in which case the user may be required to take adequate measures.

6.5 Warranty

FOSCAM values your business and always attempts to provide you the very best of service.

No limited hardware warranty is provided by FOSCAM unless your FOSCAM product ("product") was purchased from an authorized distributor or authorized reseller. Distributors may sell products to resellers who then sell products to end users. No warranty service is provided unless the product is returned to an authorized return center in the region where the product was first shipped by FOSCAM or to the point-of-purchase, which may have regional specific warranty implications.

If you purchase your FOSCAM product from online store, please contact the point-of-purchase and ask for return/replacement/repair service.

Limited Hardware Warranty

- FOSCAM products are warranted to be free from manufacturing defects in materials and workmanship starting from the shipping date of FOSCAM.

This limited hardware warranty does not cover:

- Software, including the software added to the products through our factory-integration system, software that included in the CD,etc.
- Usage that is not in accordance with product instructions.
- Failure to follow the product instructions.
- **Abuse firmware upgrade without the authorized technician's guidance.**
- **Normal wear and tear.**

Return Procedures

- Please read FOSCAM warranty policy & policy of your reseller first before sending items back to point-of-purchase.
- Customer must first contact point-of-purchase to obtain a Return Merchandise Authorization (RMA) number before returning the product. If the product you received is suspected to be defective and the product warranty has not expired, The RMA number will allow your reseller to track your return much easier and help them expedite processing your request.
- After receiving your RMA case number, pack the item(s) very well with the original box and all the original accessories included such as power adapters, brackets, cables, manuals, and driver CD disks.

- Write your RMA number and the return reason (the problem of the product) on the warranty card along with the complete package to send them back.

Replacement Services

- **If customers ask for replacement service, please contact point-of-purchase and follow their policy.**
- Our technicians will inspect all items returned for replacement requests. If the returned product is found in working order, we will return the same item received. However customers shall be responsible for all shipping & handling charges incurred for getting the units back to customers.
- If returned products are found defective, we will replace the product and assume the shipping cost for sending back the replacement unit to customers.
- If for any reason, we are unable to provide a replacement of the original returned item(s). You will have a choice for a “Substitute” item at the same equal value.
- We do not provide exchange and replacement due to normal hardware upgrade according to the market after 14 days after the product is delivered.
- Our technicians will test the product before send out the replacement, any other demand for more than two times replacement for the same product during replacement limit will be rejected.
- **Replaced products are warranted from the balance of the former warranty period.**

Warranty Forfeiture

- Warranty is void if purchase from unauthorized distributor or reseller.
- Warranty is void if trade-mark, serial tags, product stickers have been removed, altered or tampered with.
- Warranty is void for mishandling, improper use, or defacing the product.
- **Abuse firmware upgrade without the authorized technician’s guidance.**
- Warranty is void for physical damage, altered, either internally or externally, improper or inadequate packaging when returned for RMA purposes.
- Warranty is void if damage has resulted from accident, dismantle, abuse, or service or modification by someone other than the appointed vendor, misuse, or the spare part has been over the period of warranty.
- Warranty is void if product is damaged due to improper working environment or operation. (For example, improper temperature, humidity, unusual physical or electrical stress or interference, failure or fluctuation of electrical power, static electricity, using wrong power adapter, etc.)
- Warranty is void if damaged by the use of parts not manufactured or sold by FOSCAM.
- Damage caused by improper installation of third-party products.
- Warranty is void if damaged for irresistible cause, such as earthquake, fire, lightning, flood, etc.
- Product beyond limited warranty.

Shipping Fee

- If products are defective or damaged under normal use or operation in the replacement limit, distributors or resellers are responsible for the shipping cost the product back to customers, customers should assume the shipping cost send the product to the point-of-purchase.
- During replacement limit, if customers ask for replacement due to the product does not fit for customer’s personal expectation, customers should responsible for both shipping fee.

- Customers shall be responsible for both shipping fee if their product beyond the replacement limit but still in warranty limit.

Repair Service Out Of Warranty

- FOSCAM provide extra repair service for product that out of warranty, it is chargeable. The total fee contains device cost and service fee. Device cost (including accessories) is the standard uniform price provide by FOSCAM.
- Different region may have different service fee, please contact the point-of-purchase to confirm that before you ask for this service.
- Our technicians will quote the total price after detect the product, If customers refused to repair after the quotation, customers need pay for the test fee, \$3.5/hour. If agree with the quotation, test will be free.
- Repaired product out of warranty will obtains 3-month warranty from the date of the product back to customers.

Limitation of Liability

- FOSCAM is not responsible for other extra warranty or commitment promised by resellers, if your reseller promised some extra commitment or warranty; please ask for written documents to protect your rights and interests.
- FOSCAM does not offer refunds under any circumstances. Please contact the point-of-purchase and follow their refund/return policy.
- FOSCAM shall not be liable under any circumstances for any consequential, incidental, special or exemplary damages arising out of or in any connection with this agreement or the products, including but not limited to lost profits, or any claim based on indemnity or contribution, or the failure of any limited or exclusive remedy to achieve its essential purpose or otherwise. Purchaser's exclusive remedy, as against FOSCAM, shall be the repair or replacement of defective parts. If FOSCAM lists a product on its website specification in error or that is no longer available for any reason, FOSCAM reserves the right to explain it without incurring any liability.

All rights reserved. FOSCAM and the FOSCAM logo are trademarks of ShenZhen FOSCAM Intelligent Technology Limited., registered in the U.S. and other countries.

6.6 Statement

You are advised to be cautious in daily life, keep personal account information carefully, do not share personal account easily. Change passwords of your account and equipment periodically, and upgrade equipment firmware to strengthen security consciousness.

Our company makes no warranty, implied or otherwise, that this product is suitable for any particular purpose or use. You need to abide by the relevant laws and regulations of the use restrictions when using Foscam cameras. Our company takes no responsibility of illegal activities by using our products.

Our company takes no responsibility of the loss by force majeure, such as failure or faults of telecom system or the Internet network, computer viruses, malicious attacks of hackers, information damage or

loss, and faults of computer system.

Foscam company does not need to take any responsibility of the special, incidental or corresponding loss by the products of our company or any software provide by our company, including but not limited to operating loss, profit or purpose. The company only takes the responsibility applicable to national and local legal requirements.

Our company takes no responsibility of the loss caused by the following at ant time:

- 1) loss of purchases;
- 2) loss of intangible property damage, such as data, programs;
- 3) loss of compensation claimed by third-party customers.

Delete images, format the memory card or other data storage devices does not completely remove the original image data. You can restore deleted files from discarded the storage device by commercial software, but which will potentially lead to personal image data used maliciously by others. The privacy of the data security belongs to user responsibility, the company takes no responsibility.

Parts mentioned in this statement should not be understood by the configuration description of the product purchased by the customer, the product configuration must accord to the specific models purchased by the customer.

Without the prior written permission of Foscam company, all the contents of relevant operating instructions manual affiliated to the product must not be reproduced, transmitted, transcribed or stored in a retrieval system, or translated into other languages.

Our company will reserve the right to improve and modify the product and corresponding manuals. The company reserves the right of final interpretation on our products.

7 Obtaining Technical Support

While we hope your experience with the IPCAM network camera is enjoyable and easy to use, you may experience some issues or have questions that this User's Guide has not answered.

If you have problem with FOSCAM IP camera, please first contact FOSCAM reseller for solving the problems. If our reseller cannot provide service, please contact our service department:

tech@foscam.com



CE Certificate Website: <http://www.foscam.com/company/ce-certificate.html>