

AH3 MULTI-RANGE ANALOGUE TIMER



CHARACTERISTIC :

- Customized CMOS IC for low power consumption, high operation stability and extreme timing accuracy
- Flush mount with Type Y-40 adapter and surface mount without adapter
- 5 (NA, NB, NC, ND, NE) timing series available *
- Each timing series has 4 time ranges, selectable via DIP switch *
- 2 modes selectable via slide switch: Mode A (2C) for DPDT time-limiting output contacts and Mode B (1A1C) for SPDT instantaneous and time-limiting output contacts
- CE certified

Note: "*" indicates applicable to AH3 multi-range series only

SPECIFICATION :

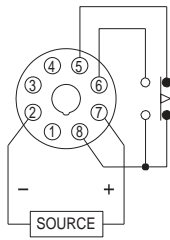
Operating voltage	DC(V): 12, 24, 48 AC(V): 12, 24, 48, 100~120, 200~240
Allowable operating voltage range	85~110% of rated operating voltage
Rated frequency	50 / 60 Hz
Contact rating	250VAC 5A (resistive load)
Reset time	MAX 0.1S
Power consumption	Approx. 5VA
Life	Mechanical: 5,000,000 times Electrical: 100,000 times
Ambient temperature	-10 ~ +50 K
Ambient humidity	MAX 85%RH
Weight	Approx. 88g

TYPE SELECTION :

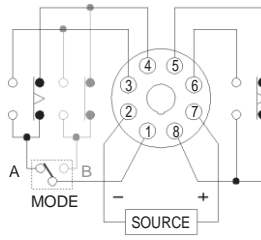
Model	Variable			Multi Range Variable		
Output contact	1C	2C	1A1C	Mode A / B		
Type	AH3-1	AH3-2	AH3-3	AH3-NA	AH3-NB	AH3-NC
Time range	1, 3, 6, 10, 30 or 60S 3, 6, 10, 30 or 60M, 3, 6, 10 or 24H			1S / 10S / 1M / 10M	3S / 30S / 3M / 30M	6S / 60S / 6M / 60M
Type				AH3-ND	AH3-NE	
Time range				1M / 10M / 1H / 10H	3M / 30M / 3H / 30H	

CONNECTION :

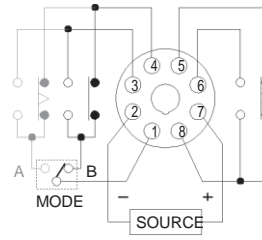
1C



2C, Mode A

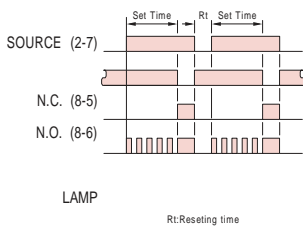


1A1C, Mode B

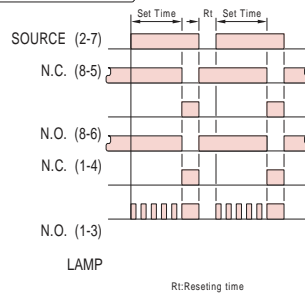


TIMING CHART :

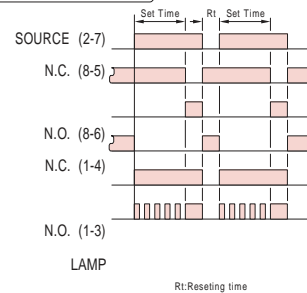
1C



2C, Mode A

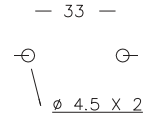
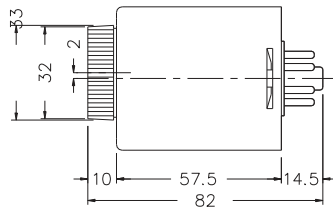
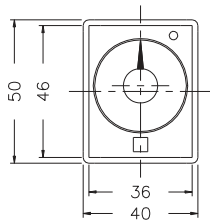


1A1C, Mode B



DIMENSIONS : (mm)

N type(Surface Mounting): Using PF085A Socket & FH-3



Y type(Flush Mounting): Using Y-40 Frame & US-08 Socket or P3G-08 Socket

