



Digital Indoor DVB-T/T2 Antenna

SRT ANT 30



Picture similar

User manual
Bedienungsanleitung
Manuel d'utilisation
Manuale utente
Manual del usuario
Bruksanvisning
Käyttöohje
Felhasználói kézikönyv

Návod k obsluze
Používateľská príručka
Instrukcja obsługi
Korisnički priručnik
Uputstvo za upotrebu
Manual de utilizare
Ръководство на потребителя



Indoor
usage



Antenna
power 5 V



UHF &
VHF



Low noise
amplifier



2-way
mounting



SERVICE CENTER

AT	✉ support_at@strong.tv ☎ 0820 400 150 (€ 0,12/Min. österr. Festnetz)	FR	✉ support_fr@strong.tv ☎ 0826 029 928 (€ 0,15 par mn poste fixe en France)
BG	✉ support_bg@strong.tv ☎ +359 32 634451	IT	✉ support_it@strong.tv ☎ 199 404 032 Da rete fissa 24,8 cent. al min. 12,5 cent. scatto alla risposta Da rete mobile max 49 cent. al min. 15,6 cent. scatto alla risposta
CEE	✉ support_hu@strong.tv ☎ +36 1 445 26 10	NL	✉ support_nl@strong.tv
DE	✉ support_de@strong.tv ☎ 0180 501 49 91 (€ 0,14/Min. deutsches Festnetz) (€ 0,42/Min. max. Mobilfunknetze)	PL	✉ support_pl@strong.tv ☎ 801 702 017
DK	✉ support_dk@strong.tv	UA	✉ support_ua@strong.tv ☎ +380 (44) 228 24 73

Supplied by STRONG & Co, Japan
 Represented by
 STRONG Ges.m.b.H.
 Franz-Josefs-Kai 1
 1010 Vienna
 Austria
 Email: support_at@strong.tv

1.0 INTRODUCTION

Thank you for purchasing the STRONG SRT ANT 30 DVB-T/T2 antenna. This antenna has been specially designed to receive digital terrestrial signals. It can be connected to any Digital Terrestrial Receiver (DVB-T/T2) and is specially designed for **indoor** use.

This antenna has a built-in low noise amplifier that amplifies the received signals for better performance. The stylish housing design will fit the antenna perfectly to your Digital TV and digital home cinema.

We recommend that you carefully read this user manual before you install the antenna. This will help you to get the best performance out of your antenna.

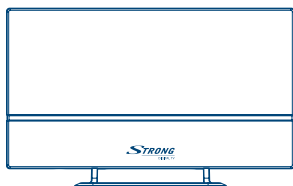
Features

- Designed for indoor reception of DVB-T/T2 signals
- Built-in LTE filter for better reception
- Compatible with DVB-T/T2 receivers supporting active antenna output (5 V)
- Enhanced technology and ecological housing materials
- Suitable for vertical and horizontal reception by universal antenna holder
- Built-in Low Noise Amplifier technology

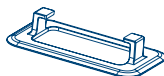
2.0 PACKAGE CONTENT

Before starting your installation, please check the contents.

1. Antenna main unit (cable attached)
2. Standing unit
3. Power adaptor
4. User manual



1



2



3

3.0 SPECIFICATIONS

Frequency Range

Amp. Gain

LTE Attenuation

Noise Figure (Max.)

O/P Return Loss

RF Output Impedance

RF Coaxial Cable

Power Adaptor

VHF: 174 ~ 230 MHz / UHF: 470 ~ 790 MHz

VHF: 20 ± 3 dB / UHF: 16 ± 4 dB

> 4 dB (790 MHz) / > 20 dB (830 MHz)

< 4 dB

< -6 dB

75 Ohm

IEC Male / 180 cm x 1 / 1.5 C-2 V

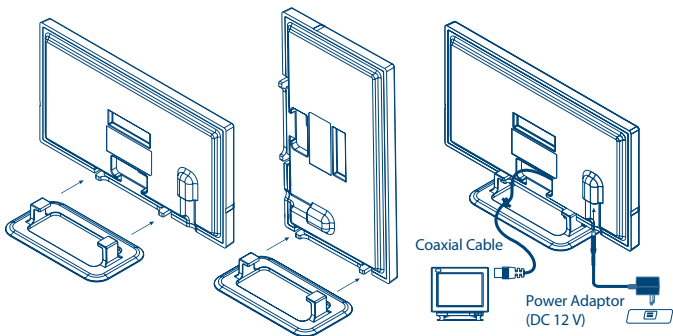
AC Input: 230 V / DC Output: 12 V / 250 mA

4.0 INSTALLATION

Powering the antenna with the power adaptor:

1. Take out the main unit and check the accessories.
2. Take the coaxial cable that is attached to the antenna to your Digital Terrestrial Receiver (or Digital TV).
3. Take out the power adaptor. Connect it to the DC input of the antenna and plug the AC end to an AC outlet. (Please only use the supplied power adaptor.)

4. Perform the channel scan. Please see the user manual of your Digital Terrestrial Receiver or Digital TV for the operation instruction.
5. Check the signal quality. If you cannot get a good and stable reception, please try to put the antenna at different position and try different directions.



4.1 To power the antenna with Digital Terrestrial Receiver

1. Turn on your TV set and turn on your Digital Terrestrial Receiver.
2. Press the "MENU" button on the remote control of your Digital Terrestrial Receiver. Check in the Set-Up or Installation menu of your receiver to see if the antenna power is set to "ON". (Normally this is indicated in the menu as ANT power, Ext Antenna power or Active antenna power. Refer to the user manual of your Digital Terrestrial Receiver.)
3. Connect the IEC Male end to your receiver. Normally the input connector on your receiver is marked as "ANT" (in) or as "RF" (in). Refer to the user manual of your Digital Terrestrial Receiver.

5.0 NOTICE

For best reception, please check the following conditions.

1. Keep the antenna away from sources of interference; keep the antenna away from high power consumption devices such as air conditioner, elevator, hair dryer and microwave oven etc.
2. Install the antenna as high as possible; in case of digital terrestrial reception, if there is any interruption between the antenna and the transmission tower, it will cause signal loss. Avoid any interruption for best reception.
3. Place the antenna near windows when using the antenna in indoor environment. If the screen or film of windows is made of metal material, it will act as signal shielding. Place the antenna away from such material.

6.0 TROUBLE SHOOTING

If you cannot receive digital programmes as you expect, please check the following conditions:

1. Check the connection. Make sure all connections are correct.
2. If you placed the antenna near the TV panel, please try to move the antenna away from the TV panel. Some panels may reduce the signal reception of the antenna.
3. Adjust the direction and position of the antenna to find the best reception angle.