

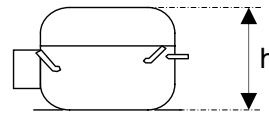
### OPERATION:

Application:	L.B.P.	Max. Ambient Temp:	43°C
Refrigerant:	R600a	(1) Max. Steady Discharge Temp:	120°C
Operation:	Capillary	(1,2) Max. Peak Discharge Temp:	135°C
Cooling:	Static	Max. Steady Condensing Temp:	60°C
		(2) Max. Peak Condensing Temp:	70°C
		Max. Winding Temp:	130°C
		Max. Impurities:	30 mg
		Max.Total Compressor Water Content:	100 mg

### COMPRESSOR:

Displacement:	6.75 cc	Oil Type:	Mineral
Bore:	23.6 mm	(4) Viscosity:	7 cSt
Stroke:	16.0 mm	Suction Muffler:	Semi-direct

(3) Net Wt:	7.6 kg
Case Size:	2 (h = 169.5 mm)
Oil Charge:	160 cc



### ELECTRICAL:

Power Supply:	220 - 240V	Motor Type:	RSIR / RSCR *
Voltage Limits:	187 - 264V	Locked Rotor Current:	7.0 / 3.3 A**
Frequency:	50 Hz		
Phase:	1 ph		

Main Winding Resistance at 25°C:	26.1 Ω
Start Winding Resistance at 25°C:	34.6 Ω

\* With Optional Run Capacitor

\*\* Maximum current / Measured after 4 seconds

(1) Measured 5cm. from the shell with insulated thermocouples

(2) For transient conditions during 'Pull Down'

(3) Net weight is with oil but without electrics

(4) Measured at 40°C

For rated performance,

the suction line must be connected to the stub marked 'AS' on the attached drawing.

### ELECTRICAL COMPONENTS:

ECC Starting Device: K 100-xx  
 Starting Device: PTC- 8100  
 (1) Starting Device: PTC - 7100DS  
 PTC Resistance: 14 Ω

*-xx Protector short code*

Run Capacitor: 3.0 μF

### PROTECTORS:

#### **BDG ¾**

Type	<b>AE 25 FY x</b>
Open °C	100 - 110 °C
Close °C	71 - 53 °C
U.T.C	0.9 A 70 °C
Time Check Current	4.2 A
Max. Current	8.5 A
Code (if any)	FG

#### **Electrica ¾**

	<b>T 0619 / kk</b>
	100 - 110 °C
	66 - 48 °C
	1.05 A 70 °C
	4.40 A
	7.0 A
	C0

#### **WANBAO**

Type	<b>B44 105 xx</b>
Open °C	100 - 110 °C
Close °C	66 - 48 °C
U.T.C	0.87 A 70 °C
Time Check Current	4.4 A
Max. Current	7.0 A
Code (if any)	M2

Alt. protectors: AF 25 FY x  
 Code (if any) DS

*BDG 'x' Codes: 6 for terminal boards Mod.89,90  
 8 for terminal board Mod.91*

*Electrica 'kk' Codes: 05 for terminal boards Mod.89,90  
 07 for terminal board Mod.91*

*(1) BDG protector AF type is for use with PTC-7100 only.*



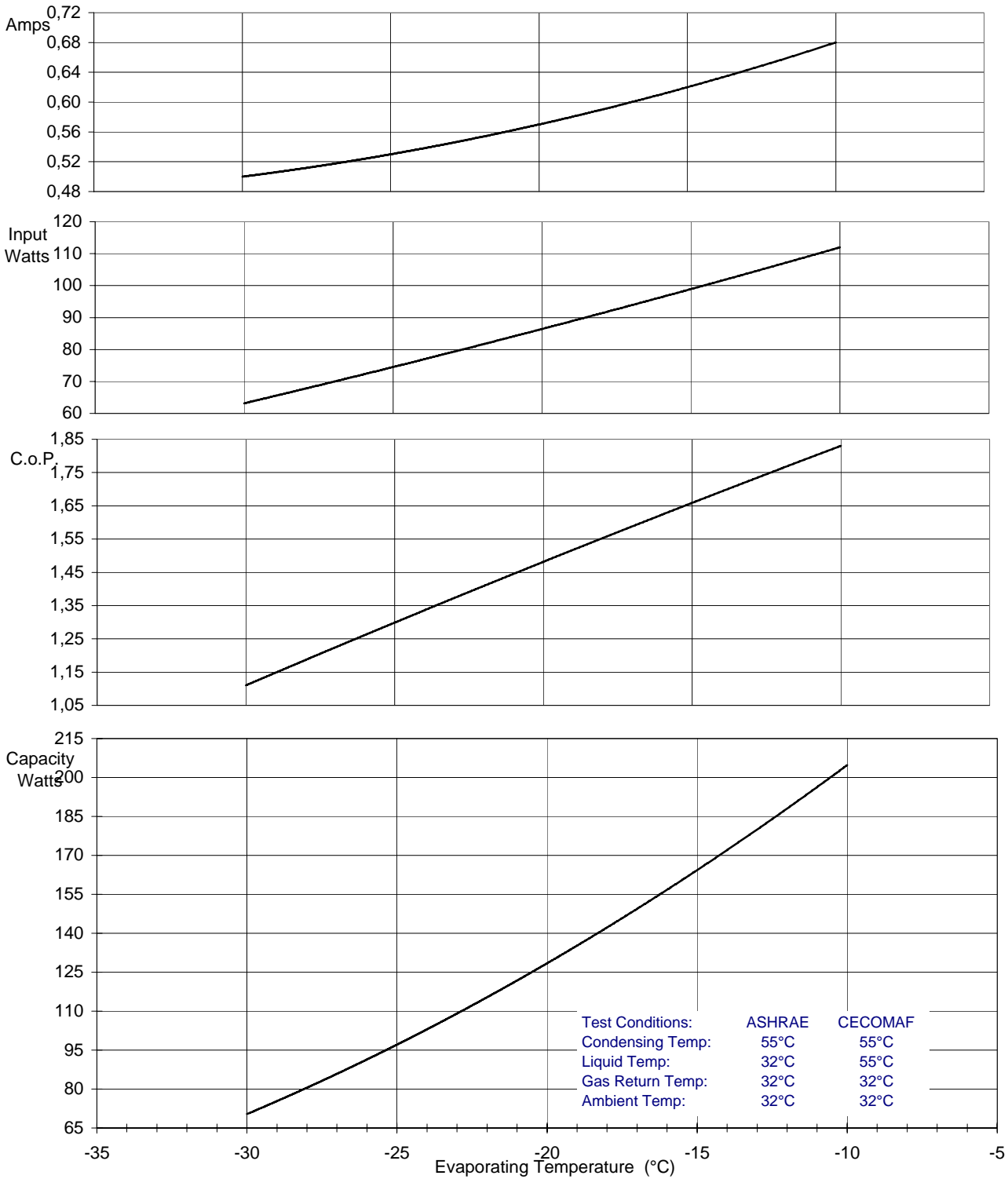
# HVY67AA.02

## PRODUCT SPECIFICATION

### PERFORMANCE:

(Graphs are at ASHRAE conditions)

220V 50Hz Without run capacitor



	Evaporating Temperature °C	-30	-25	-23,3	-20	-15	-10
<u>ASHRAE:</u>	Capacity	W	70	98	107	128	205
	C.o.P.	W / W	1,11	1,30	1,36	1,48	1,66
<u>CECOMAF:</u>	Capacity	W	57	80	105	135	168
	C.o.P.	W / W	0,90	1,07	1,22	1,36	1,50
	Input Power	W	63	75	79	86	99
	Current	A	0,50	0,53	0,54	0,57	0,62



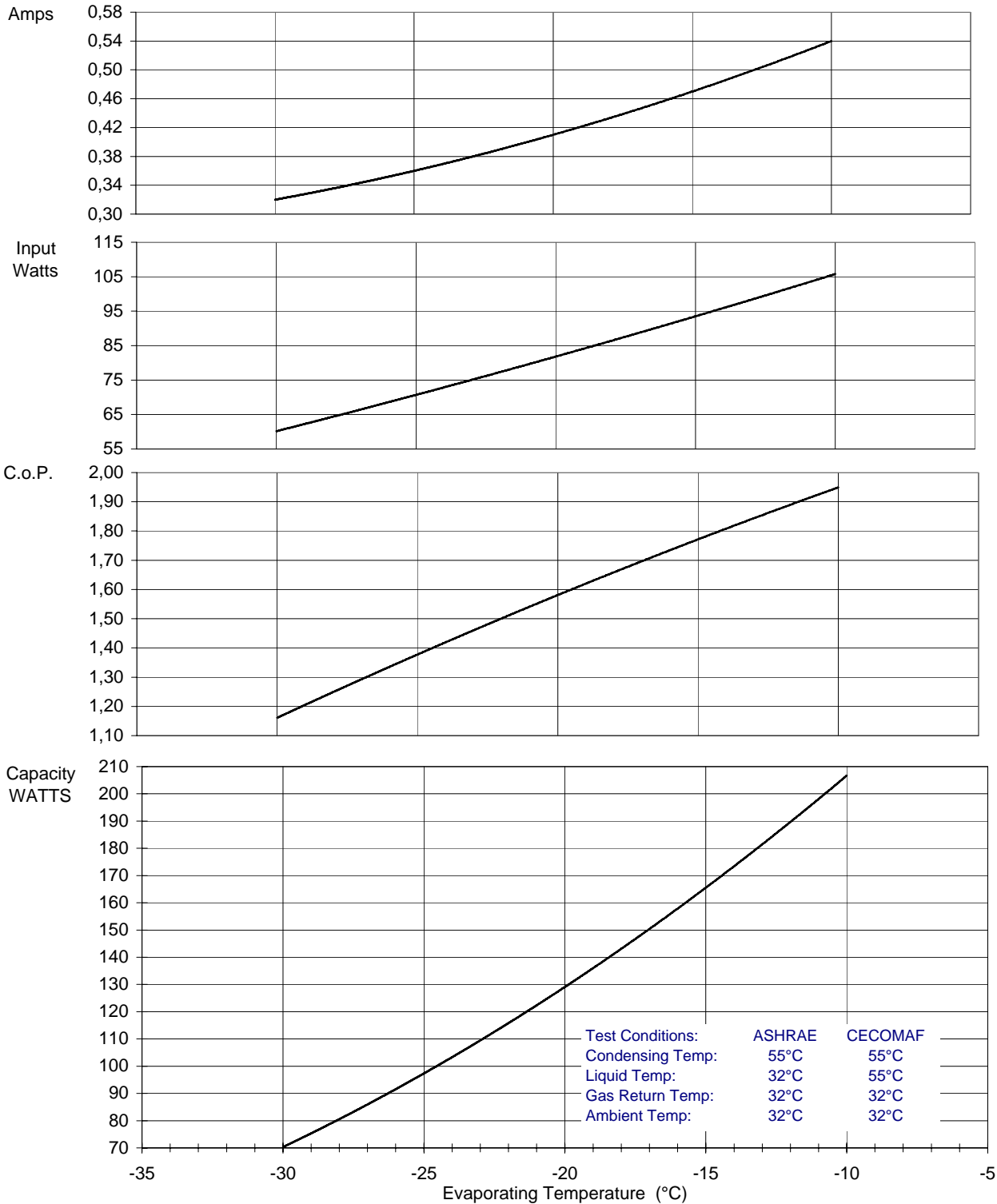
# HVY67AA.02

## PRODUCT SPECIFICATION

### PERFORMANCE:

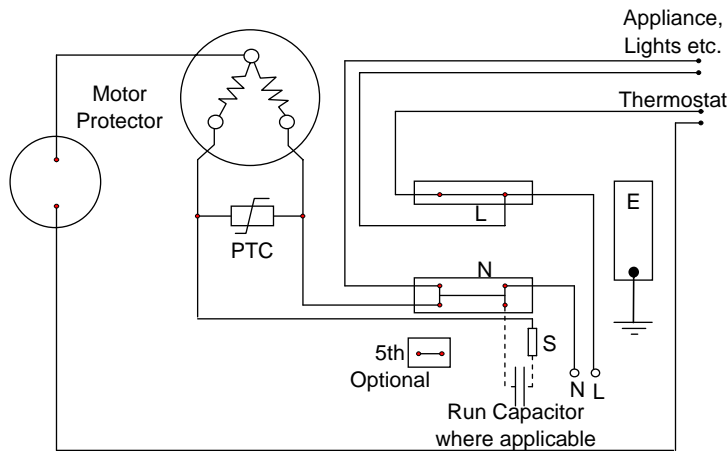
(Graphs are at ASHRAE conditions)

220V 50Hz With run capacitor

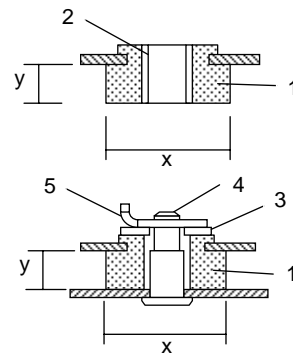


	Evaporating Temperature °C	-30	-25	-23,3	-20	-15	-10	
<b>ASHRAE:</b>	Capacity	W	70	98	108	129	165	207
	C.o.P.	W / W	1,16	1,38	1,45	1,58	1,77	1,95
<b>CECOMAF:</b>	Capacity	W	57	80		106	136	170
	C.o.P.	W / W	0,95	1,13		1,29	1,46	1,60
	Input Power	W	60	71	75	82	93	106
	Current	A	0,32	0,36	0,38	0,41	0,47	0,54

### Circuit Diagram for ECC Terminal Board Standard Version



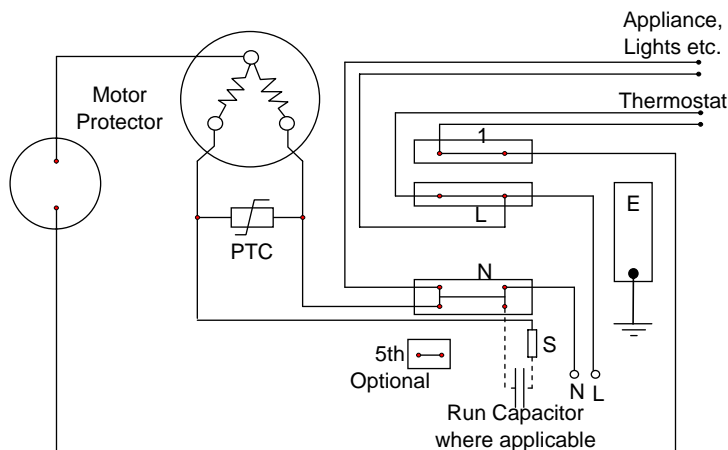
### Mounting Accessories



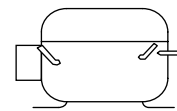
x = 26mm or 28.5mm  
y = 9mm or 10.3mm  
Other sizes available

1. Rubber grommet
2. Sleeve
3. Washer
4. Steel pin
5. Clip

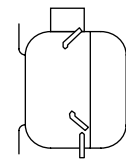
### Circuit Diagram for ECC Terminal Board Frontal Version



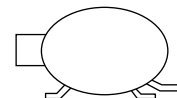
### Recommended Transport Positions when fitted into appliances



Upright

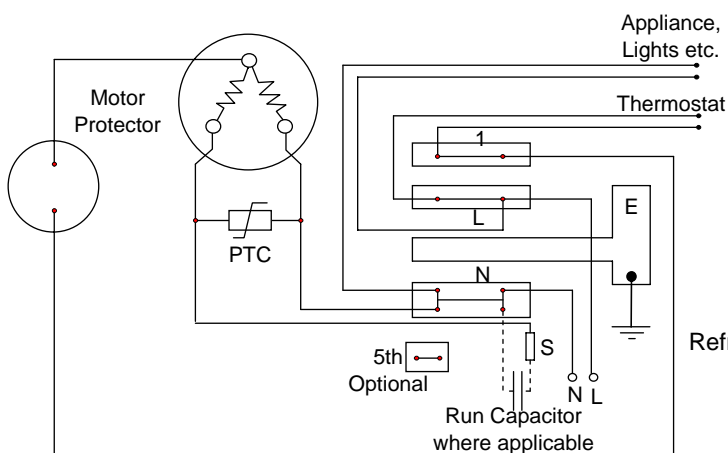


Electrics Up



Tubes Down

### Circuit Diagram for ECC Terminal Board Rast 5 Version



### Compressor Label

