

Type	Silicon Monolithic Bipolar IC
Application	Switching Regulator
Outlines	DIL 16-Pin Plastic Package ()

Λ	Absolute maximum ratings				
\mathcal{K}	Item	Symbols	Ratings	Unit	Note
1	Storage temperature	T_{stg}	-40 ~ 150	$^{\circ}\text{C}$	
2	Operating ambient temperature	T_{opr}	-25 ~ 80	$^{\circ}\text{C}$	
3	Operating ambient pressure	P_{opr}	1.0 ± 0.6	kg/cm^2	
4	Operating constant gravity	G_{opr}	1.000	G	
5	Operating shock	S_{opr}	500	G	
6	Supply voltage	V_{cc}	22	V	
7	Supply current	I_{cc}	22	mA	
8	Power dissipation	P_D	480	mW	$T_a=75^{\circ}\text{C}$

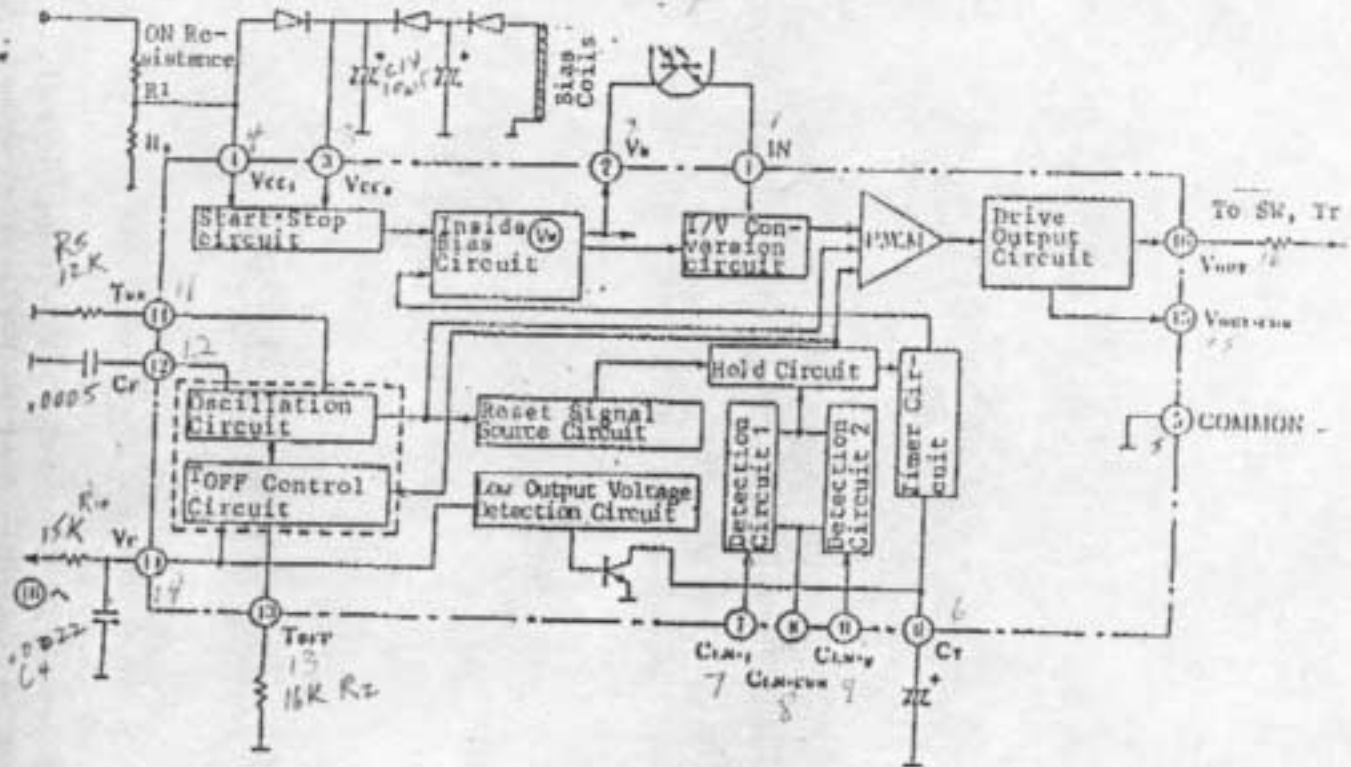
Operating supply voltage range	V_{cc}	12 V ~	22 V
--------------------------------	----------	--------	------

Note) The temperature of all items shall be $T_a=25^{\circ}\text{C}$ except 1. Storage temperature, 2. Operating ambient temperature and 8. Power Dissipation is based on $T_a=25^{\circ}\text{C}$.

Absolute maximum ratings						
Item	Symbols	Ratings		Unit	Note	
9	Circuit Voltage	V_{1-5}	-0.5	0.8	V	
10	"	V_{n-5}	-0.5	22	"	n=3.4
11	"	V_{n-5}	-0.5	7	"	n=6.7 9.14
12	"	V_{0-5}	-0.5	0.5	"	
13	Circuit Current	I_1	0	10	mA	
14	"	I_2	-10	0	"	
15	"	I_{11}	-500	0	μ A	
16	"	I_{13}	-500	0	"	
17	"	I_{15}	-500	0	mA	1
18	"	I_{16}	-500	500	"	1

Note) Any pin which is not described should not be connected externally.
 Concerning Circuit Current, \oplus means the current flowing into IC
 and \ominus does that flowing out of IC.
 Note1) Duty:10% or less
 ON Time:10msec or less

[Circuit function block diagram]



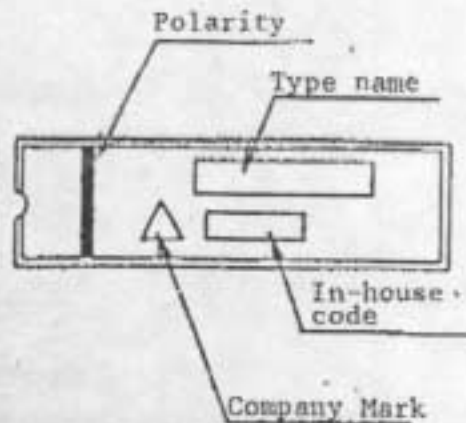
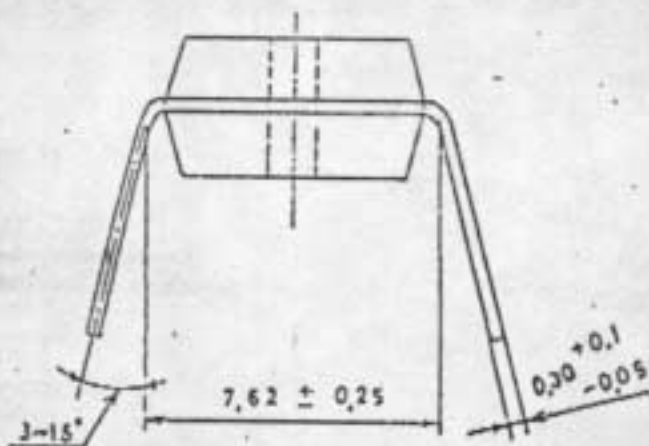
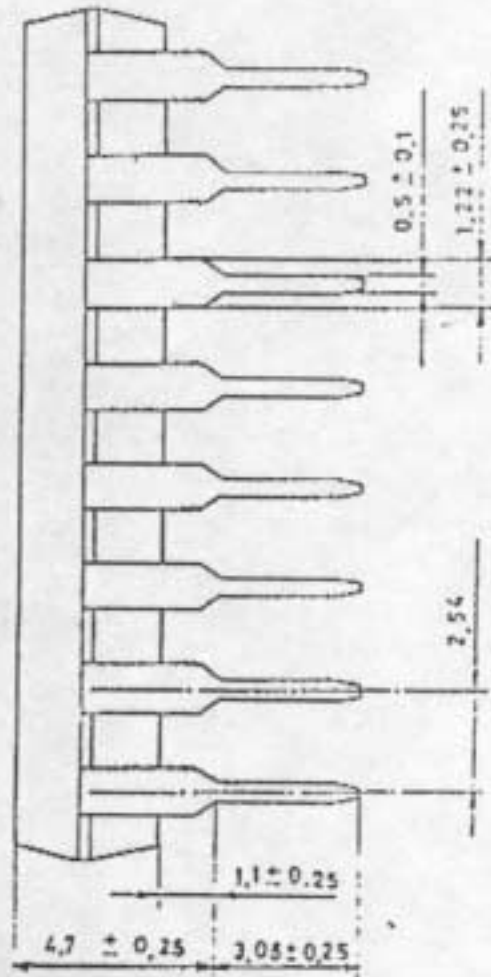
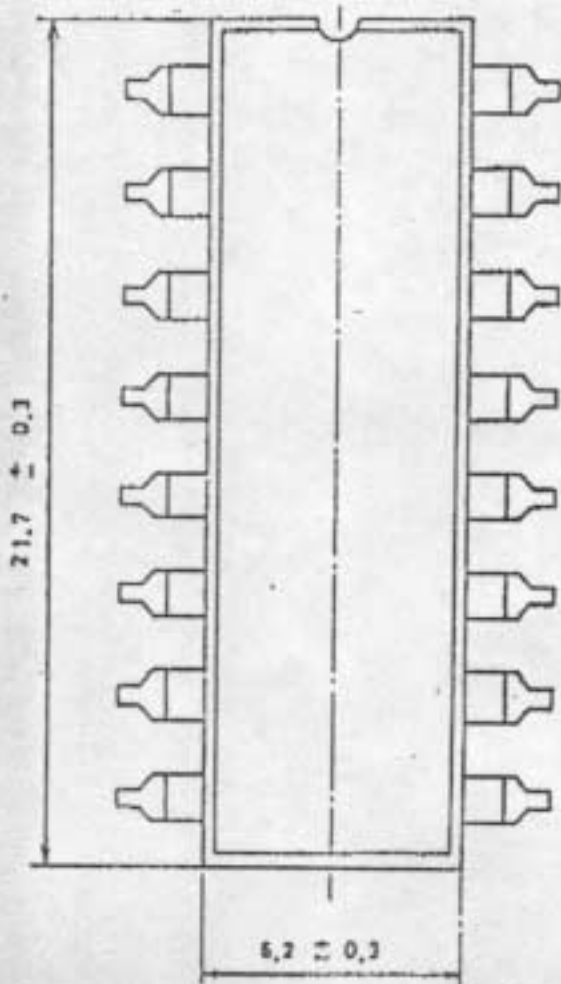
(⊘) Non-connected Pin

[Pin function description]

Pin No.	Pin Description	Pin No.	Pin Description
1	Photo transistor IN	10	NC
2	Photo transistor V_B	11	T_{ON}
3	Vcc 2	12	C_F
4	Vcc 1	13	T_{OFF}
5	COMMON	14	V_F
6	CT - C_{15} 22nF	15	$V_{OUT-COM}$
7	C_{LM-1}	16	V_{OUT}
8	C_{LM-COM}	17	—
9	C_{LM-2}	18	—

Package name E-16D

Unit: mm



E - DILPackage sectional
construction diagram

No.	Description
1	Epoxy resin
2	Gold line
3	Die
4	Comb material (Iron)
5	Lead surface process (Solder plating)

