



INTEGRATED CIRCUIT

TECHNICAL DATA

TA7204P

TOSHIBA BIPOLAR LINEAR INTEGRATED CIRCUIT
SILICON MONOLITHIC

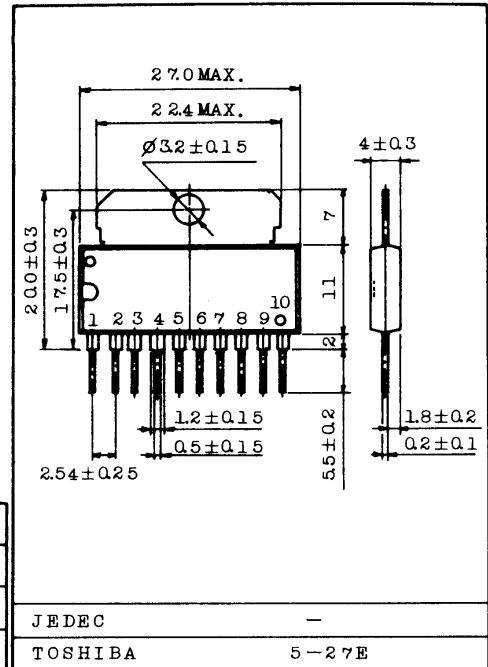
4.2W AUDIO POWER AMPLIFIER

CAR STEREO, CAR RADIO OUTPUT POWER

APPLICATION USES

- Output Power : $P_{OUT}=4.2W$ (Typ.)
at $V_{CC}=13.2V$, $R_L=4\Omega$, THD=10%
- Wide Operating Supply Voltage Range : $V_{CC}=10 \sim 16V$
- Excellent Ripple Rejection

Unit in mm



MAXIMUM RATINGS ($T_a=25^\circ C$)

CHARACTERISTIC	SYMBOL	RATING	UNIT
Supply Voltage	V_{CC}	18	V
Output Current (Peak)	I_O (Peak)	1.8	A
Power Dissipation	P_D	5.0	W
Operating Temperature	T_{opr}	-20 ~ 75	$^\circ C$
Storage Temperature	T_{stg}	-55 ~ 150	$^\circ C$

ELECTRICAL CHARACTERISTICS

(Unless otherwise specified $V_{CC}=12.5V$, $R_L=4\Omega$, $R_g=600\Omega$, $R_f=680\Omega$, $f=1kHz$, $T_a=25^\circ C$)

CHARACTERISTIC	SYMBOL	TEST CIRCUIT	TEST CONDITION	MIN.	TYP.	MAX.	UNIT
Quiescent Current	I_{CCQ}	-	-	-	-	60	mA
			$V_{CC}=18V$	-	-	60	
Output Power	P_{OUT}	-	THD=10%	3.0	3.8	-	W
			$V_{CC}=13.2V$, THD=10%	-	4.2	-	
Maximum Output Power	P_{OM}	-	$V_{CC}=13.2V$	-	6.0	-	W
Total Harmonic Distortion	THD	-	$P_{OUT}=1W$	-	-	1.5	%
Voltage Gain	G_v	-	$R_f=0$, $C_f=33\mu F$, $V_{OUT}=2.45V_{rms}$	55	-	67.5	dB
			$R_f=680\Omega$, $V_{OUT}=2.45V_{rms}$	-	42	-	
Input Resistance	R_{IN}	-	$V_{OUT}=2V_{rms}$	-	70	-	k Ω
Output Noise Voltage	V_{NO}	-	$R_g=10k\Omega$, $BW=50 \sim 20kHz$	-	-	3.5	mV

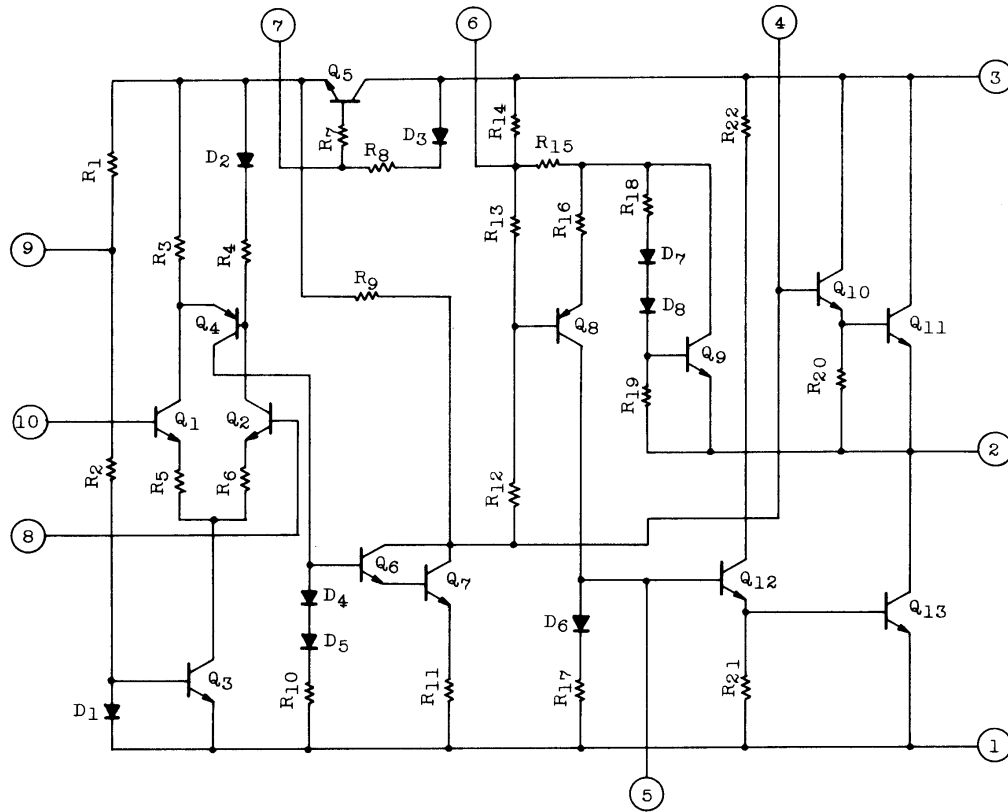


INTEGRATED CIRCUIT

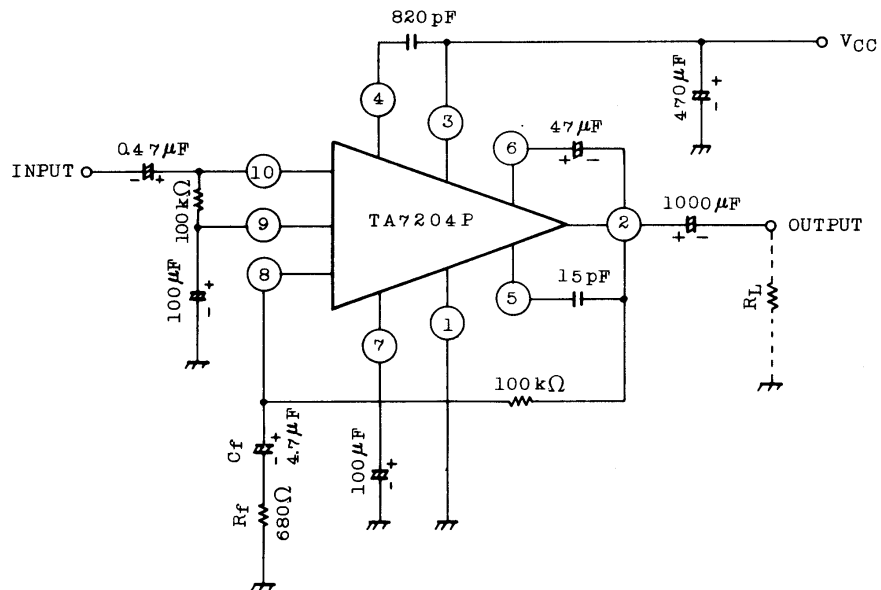
TA7204P

TECHNICAL DATA

EQUIVALENT CIRCUIT



TEST AND APPLICATION CIRCUIT





INTEGRATED CIRCUIT

TECHNICAL DATA

TA7204P

