

LONG life 30 000h



MMotors JSC

Etopole - Bulgaria



Domestic fans, MM series

These are designed for continuous or discontinued ventilation of small and medium-size living premises, as well as sanitary and sales premises.

They are mounted onto walls, ceilings, false ceilings, and inside walls. They can be used between neighboring rooms as heat exchangers.

There are varieties that can be used to directly dispose polluted air into the atmosphere or let outside fresh air into the premises.

The varieties available are: MM 100/50, MM 100/105, MM/120 and MM 150.

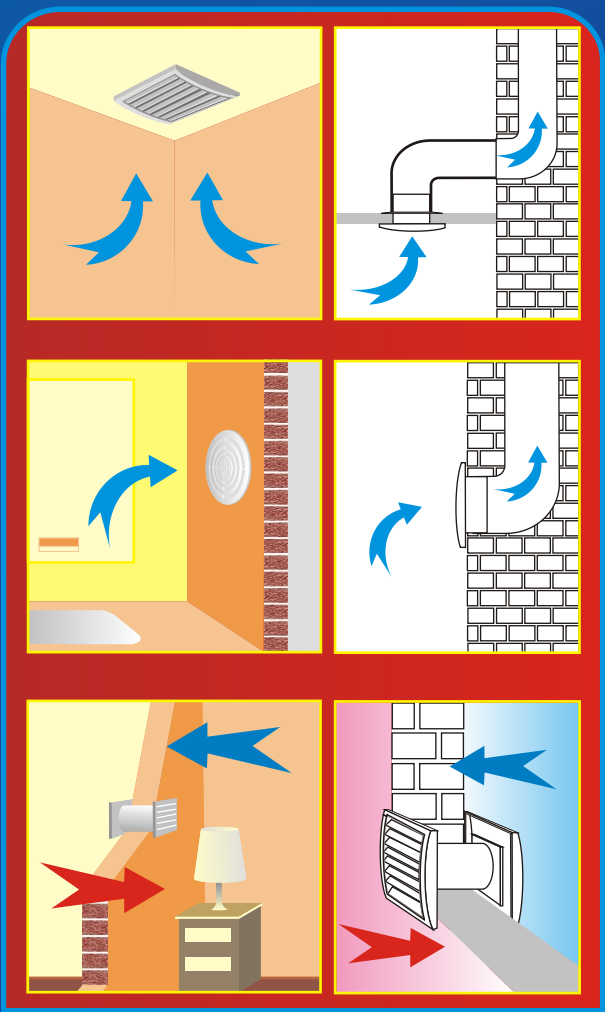
The ventilators of the MM series are available in 8 different models with or without an automatically back valve.

A noiseless electrical motor is built inside the aspirator with double capsulated ball bearings, which guarantee 30,000 hours flawless operating of the device when mounted in a horizontal or vertical position.

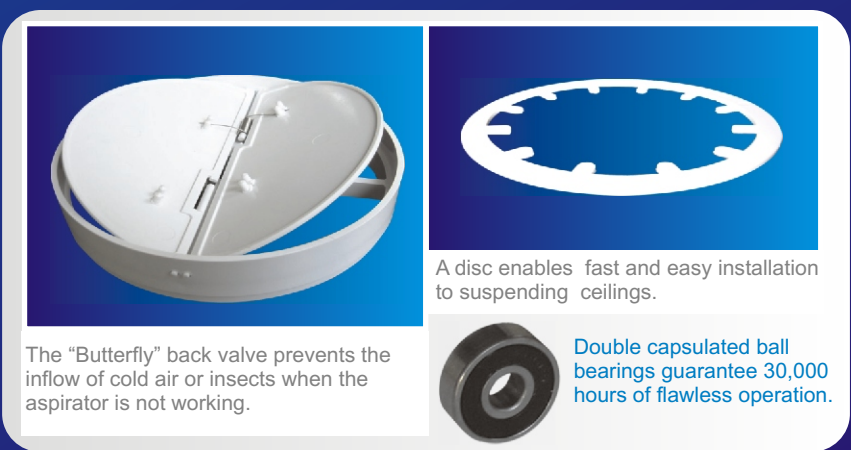
The body, the turbine, and the back valve are manufactured from high-quality plastic material.

The impeller of the electrical motor is manufactured from an aluminum alloy or a heat-resistant material which guarantees better cooling and higher fire safety.

The IP 32 protection degree allows the ventilator to operate in high humidity and aggressive environment.



The ventilators are mounted on ceilings, walls, and inside walls. They can be used in neighboring rooms as heat exchangers.



The "Butterfly" back valve prevents the inflow of cold air or insects when the aspirator is not working.

A disc enables fast and easy installation to suspending ceilings.

Double capsulated ball bearings guarantee 30,000 hours of flawless operation.

Technical characteristic



	Hz / V	min ⁻¹	m ³ / h	Pa	W	A	Kg	IP
MM - 100/50	50 / 220	2500	50	55	16	0,095	0,33	32
MM - 100/50	50 / 380	2500	50	55	15	0,055	0,33	32
MM - 100/50	50 / 115	2500	50	55	15	0,182	0,33	32
MM - 100/50	60 / 220	3000	56	71	14	0,085	0,33	32



	Hz / V	min ⁻¹	m ³ / h	Pa	W	A	Kg	IP
MM - 100/105	50 / 220	2750	105	62	16	0,110	0,33	32
MM - 100/105	50 / 380	2750	105	62	16	0,063	0,33	32
MM - 100/105	50 / 115	2750	105	62	16	0,210	0,33	32
MM - 100/105	60 / 220	3300	120	80	15	0,200	0,33	32

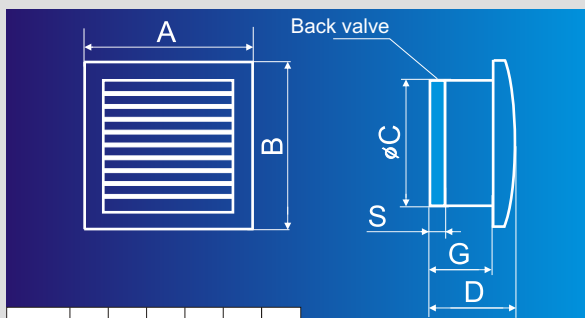
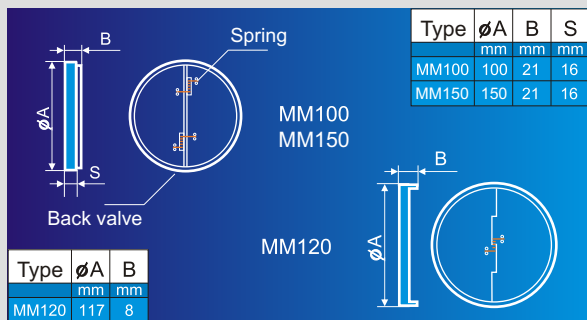
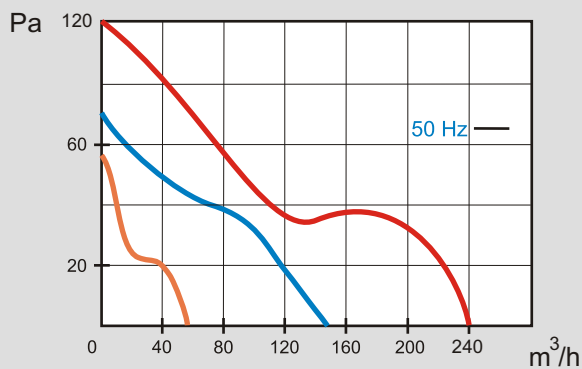
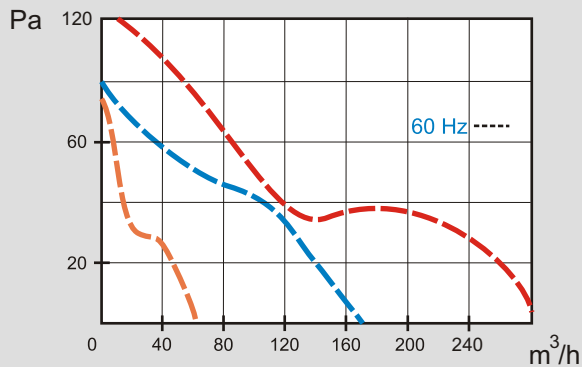


	Hz / V	min ⁻¹	m ³ / h	Pa	W	A	Kg	IP
MM - 120	50 / 220	2650	150	75	18	0,125	0,45	32
MM - 120	50 / 380	2650	150	75	18	0,073	0,45	32
MM - 120	50 / 115	2650	150	75	18	0,255	0,45	32
MM - 120	60 / 220	3200	170	95	17	0,115	0,45	32

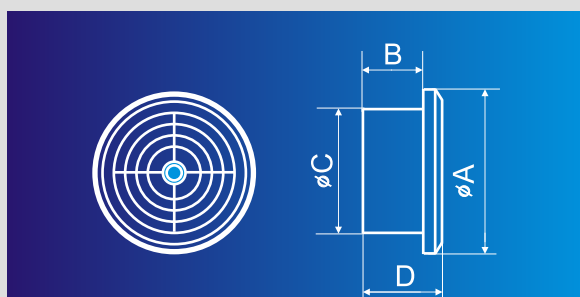
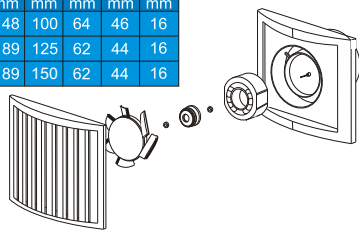


	Hz / V	min ⁻¹	m ³ / h	Pa	W	A	Kg	IP
MM - 150	50 / 220	2650	240	110	46	0,385	0,45	32
MM - 150	50 / 380	2650	240	110	46	0,224	0,45	32
MM - 150	50 / 115	2650	240	110	45	0,721	0,45	32
MM - 150	60 / 220	3200	290	130	40	0,385	0,45	32

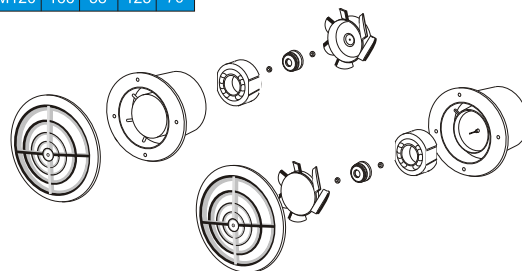
All fans can be manufactured with a 60 Hz frequency and the remaining characteristics not greatly changing.



Type	A	B	∅C	D	G	S
MM100	152	148	100	64	46	16
MM120	189	189	125	62	44	16
MM150	189	189	150	62	44	16



Type	∅A	B	∅C	D
MM100	140	58	100	70
MM120	166	58	125	70



www.mmotors-bg.com