



brennenstuhl®

Mobiler LED Akku Strahler
Mobile rechargeable LED floodlight
Projecteur LED portable rechargeable
Mobiele LED-accu-werklamp

RUFUS

1500 MA/3000 MA/3020 MA

DE	Bedienungsanleitung	3
EN	Operating instructions	7
FR	Mode d'emploi	11
NL	Gebruikshandleiding	15
IT	Istruzioni per l'uso	19
SE	Bruksanvisning	23
ES	Manual de instrucciones	27
PL	Instrukcja obsługi	31
CZ	Návod k obsluze	35
HU	Kezelési útmutató	39
RU	Руководство по эксплуатации	43
TR	Kullanım kılavuzu	48
FI	Käyttöohje	52
GR	Οδηγίες χρήσης	56
PT	Manual de instruções	60
EE	Kasutusjuhend	64
SK	Návod na používanie	68
SI	Navodila za uporabo	72
LT	Naudojimo instrukcija	76
LV	Lietošanas instrukcija	80

EN Operating instructions

Mobile rechargeable LED floodlight

RUFUS

1500 MA/3000 MA/3020 MA

SAFETY INSTRUCTIONS

- Carefully read the operating instructions before use.
- Don't use the floodlight if it is damaged.
In this case, contact an electrician or refer to the specified service address.
- Never open the device.
- Do not use the floodlight in potentially explosive atmospheres - danger to life!
- To charge the batteries, only use a certified USB power supply unit.
- A destroyed protective cover cannot be replaced. The floodlight has to be disposed of if the protective cover is broken.



- Please never look directly into the light.



- If the minimum distance is not complied with, illuminated objects may overheat.



- Hot surface.
- During the charging process, the product is not IP65-compliant (Dust-tight and protected against water-jets).

TECHNICAL DATA

Type:	RUFUS 1500 MA	RUFUS 3000 MA	RUFUS 3020 MA
Item no.:	1173100100	1173110100	1173110300
Power:	15 W	30 W	30 W
Colour temperature:	6500 K	6500 K	2700-3500-4500-5500-6500K
Rechargeable battery:	Li-Ion 3.7V/5.0 Ah	Li-Ion 7.4V/5.0 Ah	Li-Ion 7.4V/5.0 Ah
Charging input:	5V/2 A	5V/2 A	5V/2 A
Charging time (2 A charging):	~3 h	~5 h	~5 h
Power bank:	5V/1 A	5V/1 A	5 V/1 A
IP, IK:	IP65, IK08	IP65, IK08	IP65, IK08
Temperature range:	-10°C - +45°C	-10°C - +45°C	-10°C - +45°C

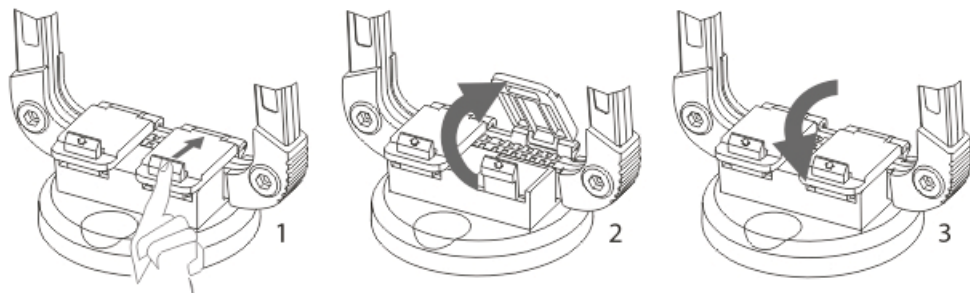
SET-UP/MOUNTING THE LAMP

Using the multi-level, folding bracket, the tilt angle of the lamp can be adjusted as needed.

The lamp can be hung up on a hook using the bracket.

The lamp can be attached to metallic surfaces by means of the magnetic holder which, depending on the scope of delivery, is either included or available separately as an accessory.

For this purpose, simply attach the magnetic holder to the bracket of the light. Please ensure that the magnetic holder is firmly seated in order to avoid possible damages caused by the falling light.



COMMISSIONING

- When using the device for the first time, completely discharge and recharge the rechargeable battery once.
- During charging, the product may be operated with reduced light power.
- In cases of extended non-use, charge the battery every 3 months.
- The battery cannot be exchanged. If the battery is defective, the floodlight has to be disposed of properly.

OVERVIEW OF THE CONTROL ELEMENTS



Switch for power on/off and dimming:

Pressed once: Floodlight starts.

The light power can be set in 5 levels by pressing several times.

If the switch is not actuated for more than 5 seconds, the floodlight switches off when it is actuated again, regardless of the last brightness setting.



Switch to indicate the battery charge:

When the floodlight is switched on, the battery charge is displayed in %.








When the floodlight is switched off, the battery charge can be displayed by pressing the switch with the battery symbol. It is displayed until the switch is pressed again.



Switch for light colour (RUFUS 3020 MA only):

When the floodlight is switched on, it starts with the last light colour set.

The desired light colour can be set by pressing several times.

RUFUS 1500 MA	RUFUS 3000 MA	RUFUS 3020 MA
● 100% ● 1500LM	● 100% ● 3000LM	● 100% ● 6500K ● 2700LM
● 80% ● 1125LM	● 80% ● 2250LM	● 80% ● 5500K ● 2000LM
● 60% ● 750LM	● 60% ● 1500LM	● 60% ● 4500K ● 1350LM
● 40% ● 375LM	● 40% ● 750LM	● 40% ● 3500K ● 675LM
● 20% ● 150LM	● 20% ● 300LM	● 20% ● 2700K ● 270LM
 	 	  



- 1 Charging port type C
- 2 Powerbank USB
- 3 Charging cable type A/C



CHARGING THE BATTERY

Only charge your battery using the supplied charging cable type A/C.

A port type C is available as charging input. The charging cable can be plugged into a conventional USB charger at the other end.

Only use a tested USB power source (e.g. charger, computer) with a maximum output voltage of 5 V:

The lamp can be used during charging, however with reduced light power of 25%. In this operating mode, the battery charging time will be considerably extended.

Connection: USB source – charging cable type A/C (3) – charging port (1).

During charging, the charging indicator flashes, it is illuminated constantly when the battery is fully charged.

CHARGING EXTERNAL DEVICES VIA USB

The floodlight offers a USB power bank function. An external device like a smartphone or tablet can be connected to the USB port (2) and charged. The number of possible charge cycles depends on the type of external device and on the charge level of the floodlight's battery.

MAINTENANCE

The light source of this lamp cannot be replaced; if the light source has reached the end of its service life, the entire lamp has to be replaced.

CLEANING

Do not use solvents, caustic cleaning agents or similar products. Only use a dry or slightly moistened cloth for cleaning.

DISPOSAL



Electronic appliances must not be disposed of in household waste!

The European Directive 2012/19/EC on Waste Electrical and Electronic Equipment and its implementation on national law stipulate that used electronic appliances should be collected separately and recycled in an environmentally friendly manner. For possibilities of disposal of the used appliance, please contact your local or municipal administration.



Batteries and accumulators must not be disposed of in the household waste!

As a consumer, you are legally obliged to hand in all batteries and accumulators at a collection point in your community/urban district or in the trade, so that they can be disposed of in an environmentally friendly manner, otherwise there are possible risks to the environment and human health.

CE EU DECLARATION OF CONFORMITY

**UK
CA**

UK DECLARATION OF CONFORMITY

The declaration of conformity is deposited at the manufacturer.

MANUFACTURER

Hugo Brennenstuhl GmbH & Co. KG
Seestraße 1 – 3 · D-72074 Tübingen

H. Brennenstuhl S.A.S.
rue de Bruxelles · F-67170 Bernolsheim

lectra technik ag
Blegistrasse 13 · CH-6340 Baar

Brennenstuhl UK Ltd.
No 1 Royal Exchange · London EC3V 3DG, UK

For further information, please refer to the Service/FAQ section on our homepage www.brennenstuhl.com.